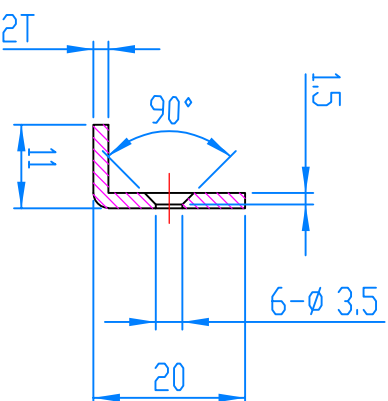
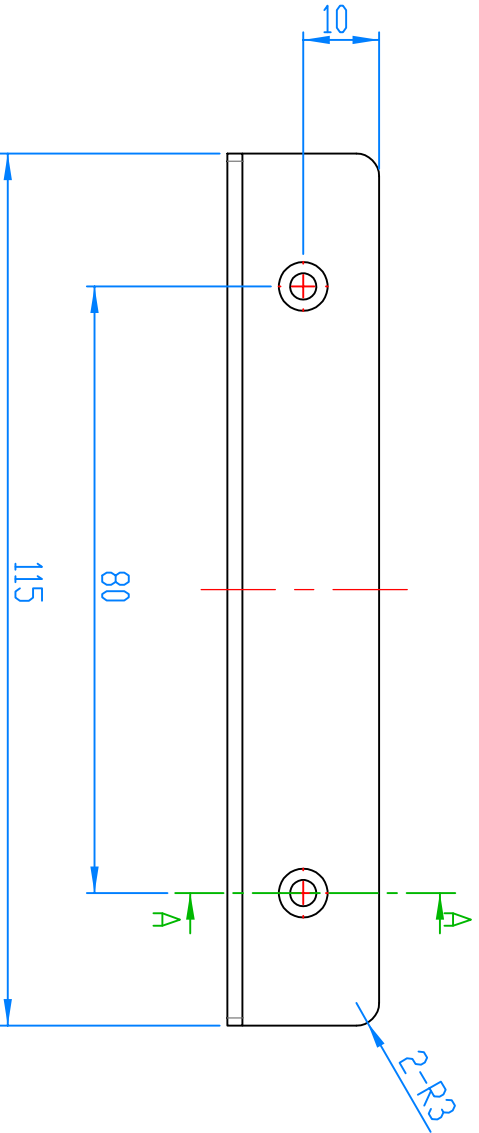
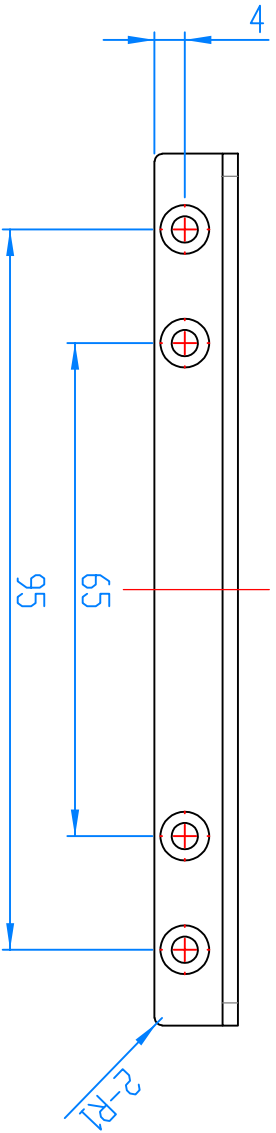
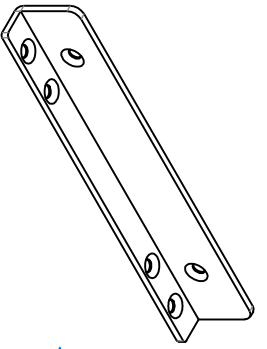


| SYN | ZON | REVISIONS | REV. NO | CHG. DATE | CHECK | APPR |
|-----|-----|-----------|---------|-----------|-------|------|
| | | | | | | |
| | | | | | | |
| | | | | | | |



SECTION A-A

- NOTE
1. Appearance No foreign objects or stains.
 2. Make sure there are no problems with assembly.
 3. Unmarked tolerance applies to general tolerances.
*Apply f(fine)
 4. No liquid such as cutting oil should remain.
 5. If the shape should be changed or problem is occurred during manufacturing of mold, it needs th be discussed with designer
 6. Refer to 3D drawing for details
 7. Mass-produce after obtaining approval.

| Permissible deviations in mm for ranges in nominal lengths | f (fine) | Tolerance class designation (description) | | | v (very coarse) | 1 | Name | Material | QTY/SET | Q'ty | Remarks |
|--|----------|---|------------|------|-----------------|----|--------------------|------------|---------|------|----------|
| | | m (medium) | c (coarse) | | | | | | | | |
| Over 3 up to 6 | ±0.05 | ±0.1 | ±0.2 | ±0.5 | | NO | | | | | |
| Over 6 up to 30 | ±0.1 | ±0.2 | ±0.5 | ±1.0 | | | RACK MOUNT BRACKET | | | | |
| Over 30 up to 120 | ±0.15 | ±0.3 | ±0.8 | ±1.5 | | | ANT-3XX000 | AL 1.2T | | | Antirica |
| Over 120 up to 400 | ±0.2 | ±0.5 | ±1.2 | ±2.5 | | | ASSY NAME | END FINISH | Black | | |
| Over 400 up to 1000 | ±0.3 | ±0.8 | ±2.0 | ±4.0 | | | DRAWN BY | CHECKED BY | | | |
| Over 1000 up to 2000 | ±0.5 | ±1.2 | ±3.0 | ±6.0 | | | JM,Jeong | | | | |
| Over 2000 up to 4000 | - | ±2.0 | ±4.0 | ±8.0 | | | 07.27.2021 | | | | |