

ANT-37000A / Spotbox USB firmware re-install

Contents

ANT-37000A / Spotbox USB firmware re-install 1

Document info..... 1

1. USB memory device..... 2

 1.1. Check format of USB device – Windows 10 2

 1.2. Format of USB device – Windows 10 4

2. Update files 6

 2.1. Download files..... 6

 2.2. Install update files 8

3. Access ANT-37000A 10

Due to the limitation of FAT32, the Windows 10 system doesn't support creating a FAT32 partition on a more than 32GB disk partition. As a result, you cannot directly format a 64GB memory card nor USB flash drive to FAT32

NOTE ANT-37000 and ANT-37000A maybe used in the guide. They are the same product.

For further help and advice please contact Antrica on:
 Email: support@antrica.com
 Phone: +44 1628 626098 ext 3

Document info

Version	date	author	Comments
0.1	4-Jul-22	David M	Initial release

1. USB memory device

The USB memory device MUST be formatted as FAT32 for the ANT-37000A to be able to access the files on the memory stick.

1.1. Check format of USB device – Windows 10

- 1.1.1. Right click USB memory device
- 1.1.2. Select "Properties" from pop-up window, then left click.

Figure 1 : Check format of USB device - step #1

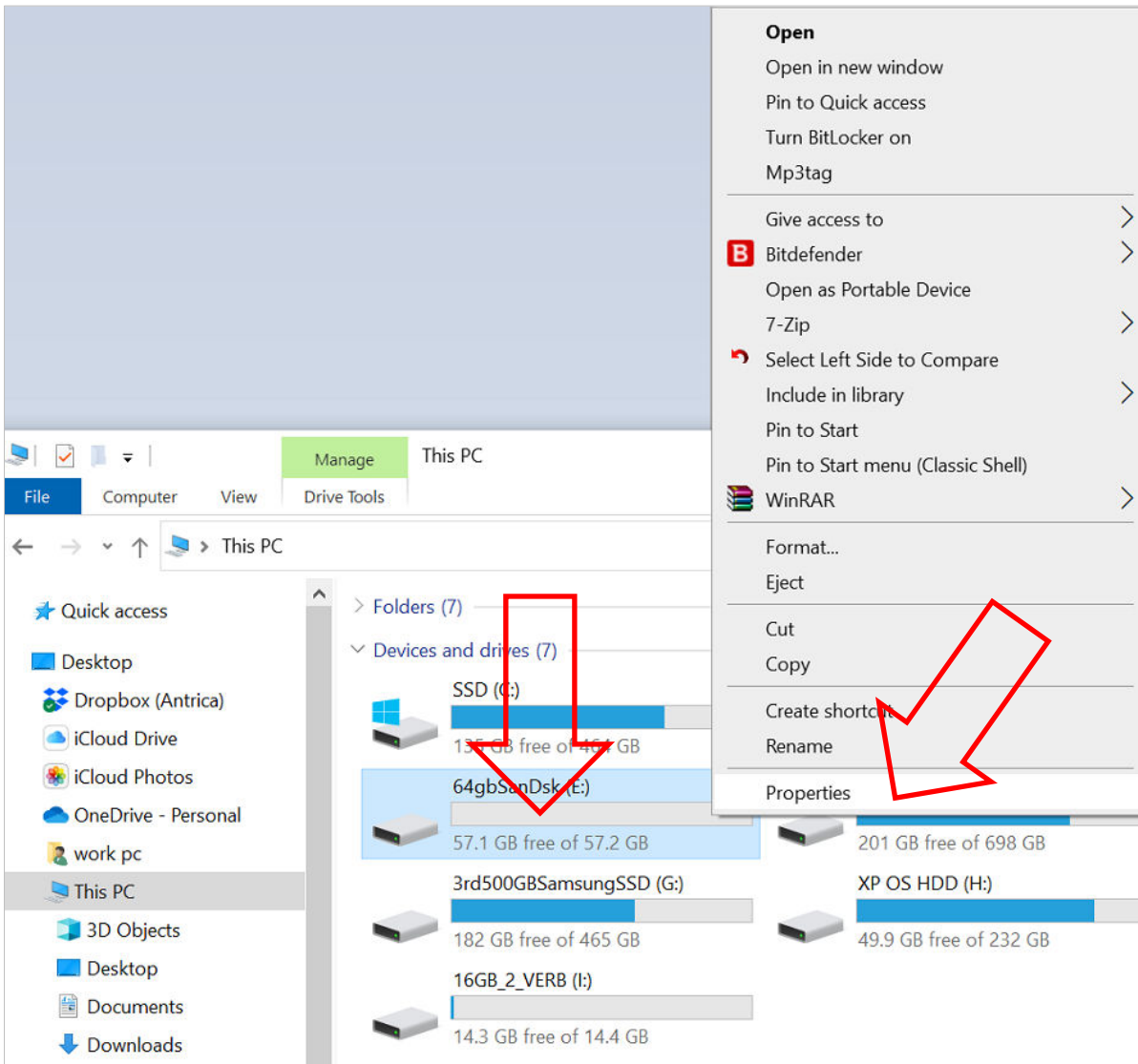
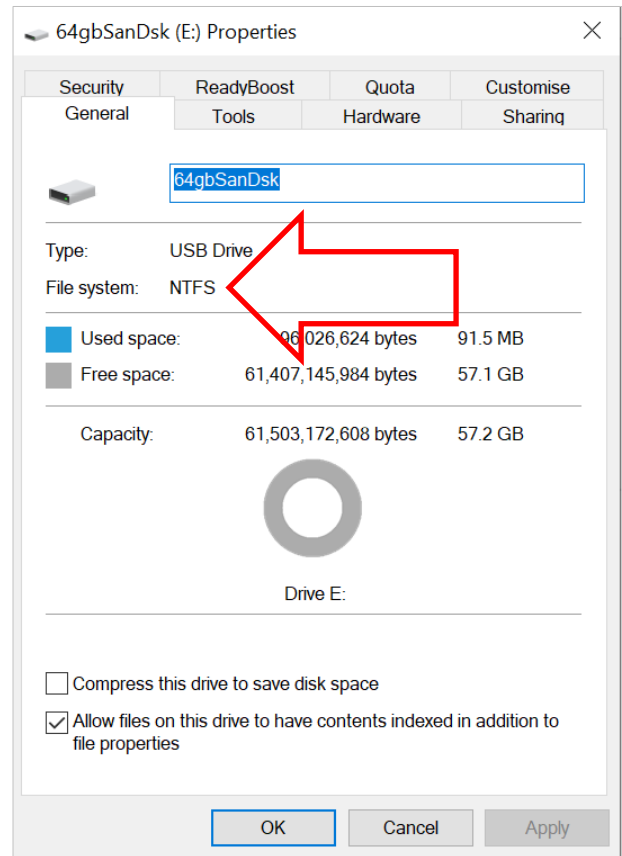


Figure 2 : Check format of USB device - step #2

1.1.3. The current format is shown, see Figure 2, in this case NTFS



1.2. Format of USB device – Windows 10

- 1.2.1. Right click USB memory device
- 1.2.2. Select "Format..." from pop-up window, then left click, as shown in Figure 3
- 1.2.3. The Format window open, see Figure 4

Figure 3 : Format USB device - step #1

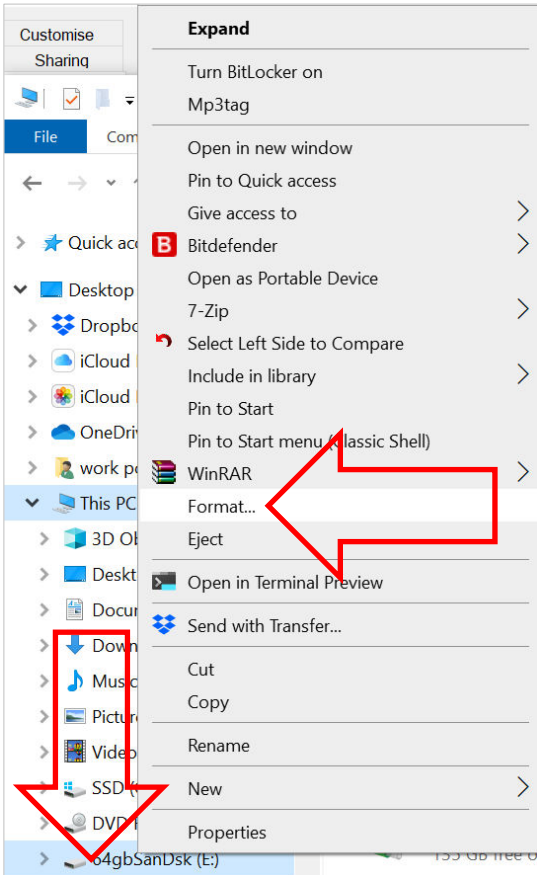
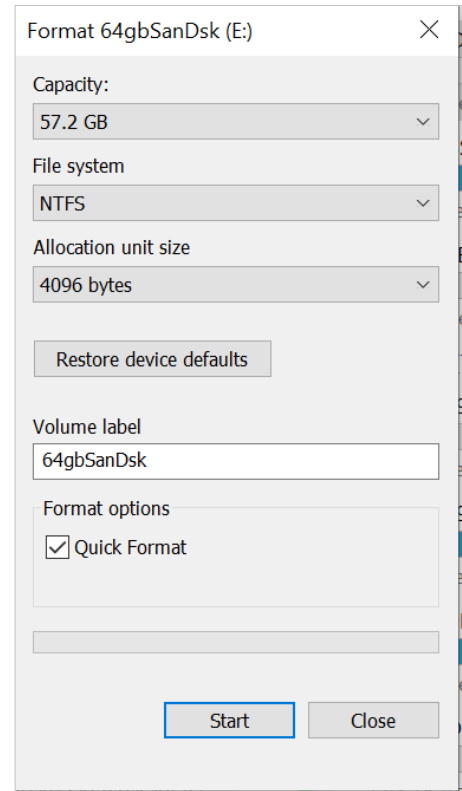


Figure 4 : Format USB device - step #2



- 1.2.4. In the "Format" select "File System"
 - 1.2.4.1. In Figure 5, no FAT32 option is available – memory device is 64GB
 - 1.2.4.2. Figure 6, shows FAT32 as an option – memory device is 16GB
- 1.2.5. Select the FAT32 option and then click "Start"

Figure 5 : Format USB device - step #3 format options – no FAT32

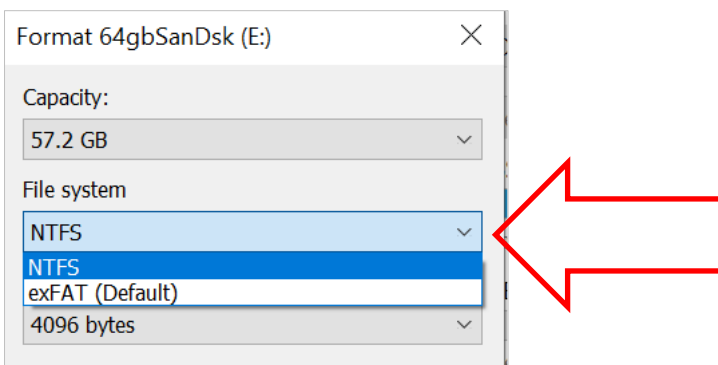


Figure 6 : Format USB device - step #3 format options –FAT32 available

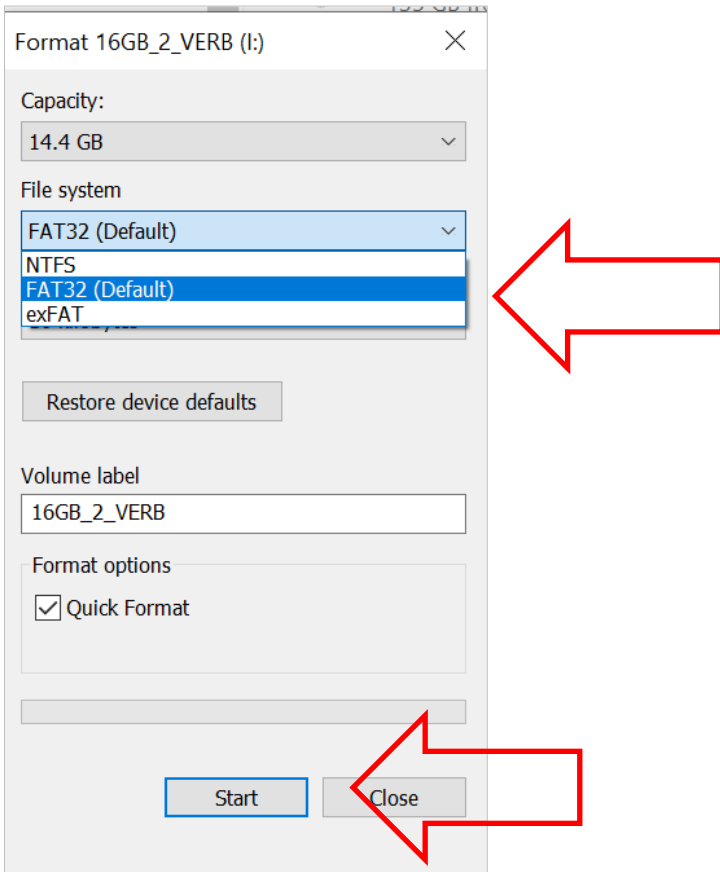
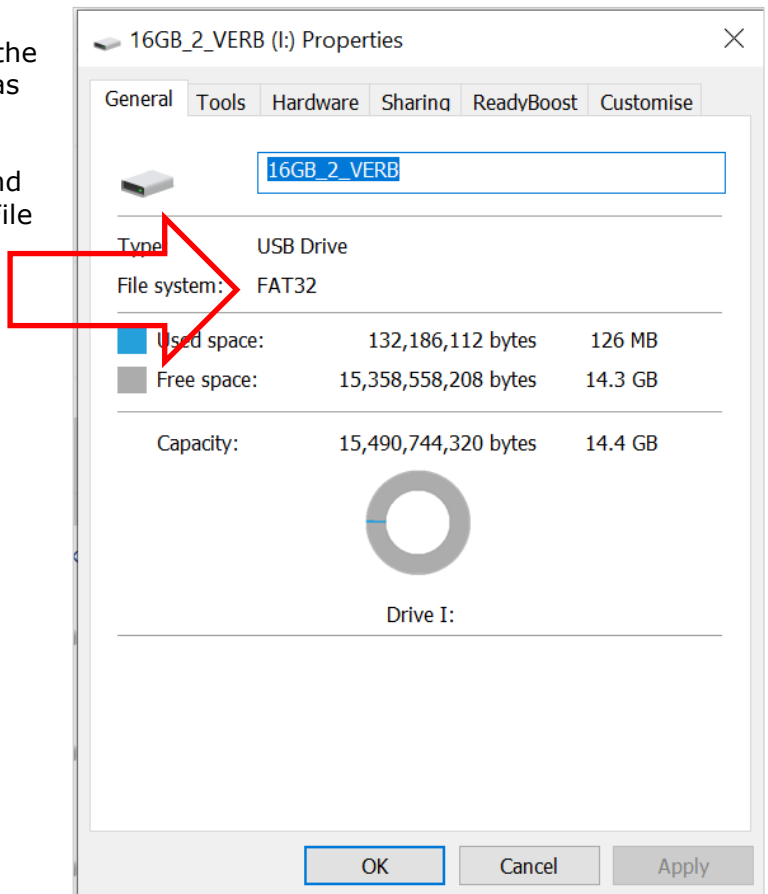


Figure 7 : USB memory device is formatted as FAT32

1.2.6. After the formatting check the memory device is formatted as FAT32. Following steps in section "1.1 Check format of USB device – Windows 10" and the Properties should show "File System: FAT32", as shown in Figure 7

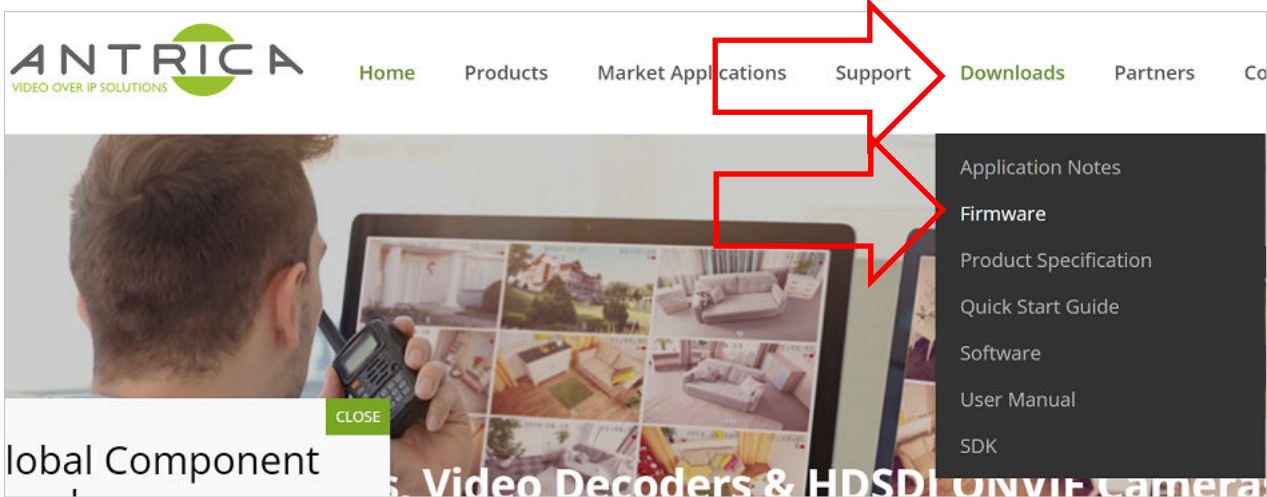


2. Update files

2.1. Download files

- 2.1.1. Go to the Antrica website - <https://antrica.com/>
- 2.1.2. Select Downloads, the Firmware, as shown in Figure 8

Figure 8 : Antrica website -Downloads



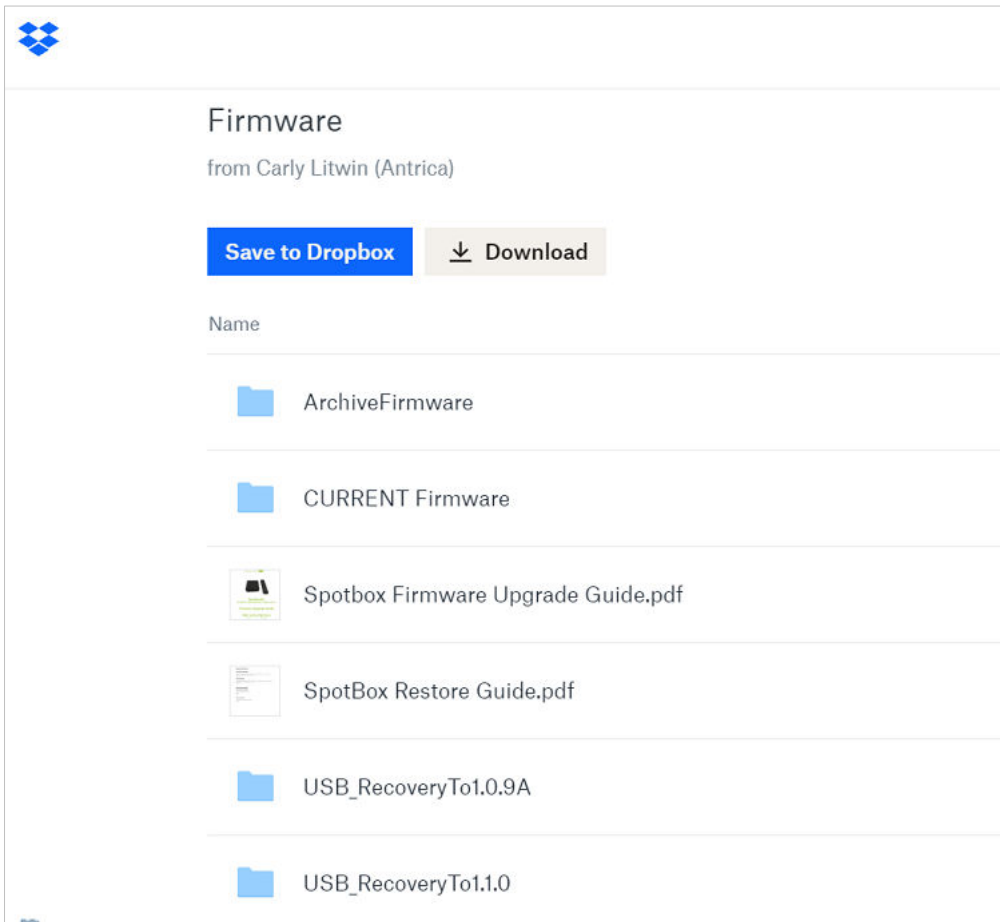
- 2.1.1. Scroll down to Decoders
- 2.1.2. Find the ANT-37000 product, as shown in Figure 9

Figure 9 : ANT-37000 / Spotbox firmware product



- 2.1.3. A new browser window will open shown the contents of a Dropbox™ folder, as shown in Figure 10

Figure 10 : Dropbox™ folder with ANT-37000 firmware



- 2.1.1. Select the "USB_RecoveryTo1.1.0" folder.
- 2.1.2. You will now see 3 files (at the time of writing), this may change, see Table 1

Table 1 : Contents of USB_RecoveryTo1.1.0 folder

Date	time	size (bytes)	filename
05/01/2022	11:46	1,148	recoverTo_1.1.0_ViaUSB.txt
05/01/2022	11:46	73,761,802	USB_RecoveryTo1.1.0.zip
14/04/2022	09:38	444	USB_RecoveryTo1.1.0.zip_CHKSUM.txt

- 2.1.3. Download the USB_RecoveryTo1.1.0.zip
- 2.1.4. Extract these contents, they are shown in Table 2

Table 2 : Contents of zip file

Date	time	size (bytes)	filename
05/05/2020	09:15	143,467,008	mmcblk0.img
05/01/2022	11:46	1,148	recoverTo_1.1.0_ViaUSB.txt
31/03/2020	08:51	216	update_boot_usb.scr.ub

- 2.1.5. Copy the file **mmcblk0.img** and **update_boot_usb.scr.ub** files to the FAT32 formatted USB memory device

2.2. Install update files

Prepare the ANT-37000A for the USB firmware install, connect:

- 2.2.1. Ethernet cable – connected to an IP switch
- 2.2.2. HDMI to a suitable monitor
- 2.2.3. USB memory device to USB port

The Firmware re-install process will be:

- 2.2.4. Connect power
- 2.2.5. ANT-37000A Front LED will be a solid purple(ish) colour
- 2.2.6. No HDMI output
- 2.2.7. Wait ~10 seconds
- 2.2.8. Front LED flash red
- 2.2.9. Factory reset message on HDMI monitor – see Figure 11

Figure 11 : HDMI output - factory reset



- 2.2.10. Progress bar moves
- 2.2.11. Firmware installed reboot system message – see Figure 12

Figure 12 : HDMI output – reboot message



- 2.2.12. Remove power
- 2.2.13. Remove USB
- 2.2.14. Connect power
- 2.2.15. Front LED solid purple(ish) colour
- 2.2.16. No HDMI output
- 2.2.17. Wait ~10 seconds
- 2.2.18. Front LED flash red
- 2.2.19. Starting system message on HMDI – see Figure 13

Figure 13 : HDMI output – system start message



- 2.2.20. Default screen will be shown – see Figure 14, with firmware version and IP address at bottom, see Figure 15, for enlarged image

Figure 14 : HDMI output - default startup screen

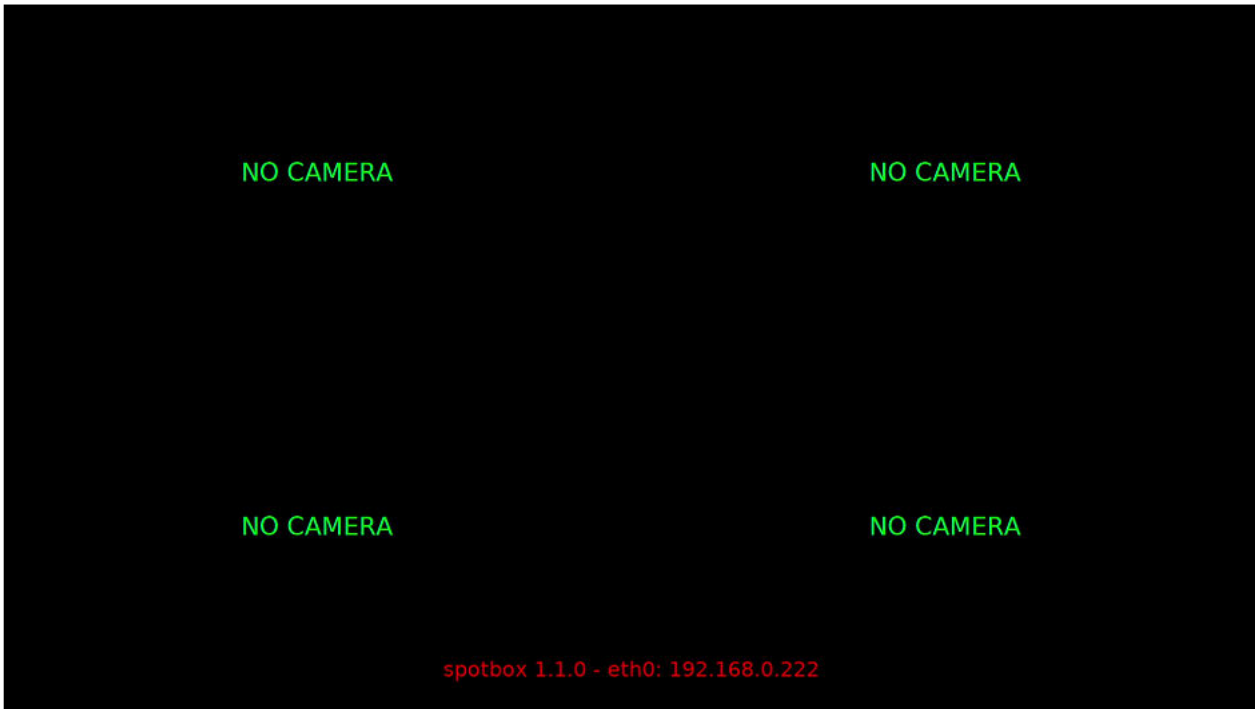


Figure 15 : HDMI output - info at bottom of screen



3. Access ANT-37000A

Once the update is complete you can access the ANT-37000A webpage. It will be found at 192.168.0.222. Ensure you PC is on the correct network subnet to access this IP address.

The login detail is:

Username: admin

Password: admin