

# ANT-37100 (Spotbox2) update guide

## Contents

ANT-37100 (Spotbox2) update guide ..... 1

Document info..... 1

1. Update file ..... 2

2. Update ..... 2

    2.1. Webpage ..... 2

    2.2. Monitor ..... 5

In this guide the update is to 2.0.5. Sometimes the “debug” screen is seen. This debug screen output can be seen in Figure 6 on page 6.. This is **not** a fault and a power cycle is required to enable the ANT-37100 to complete its update. For this reason, it is not recommended to update the ANT-37100 if you do not have the ability to power cycle the ANT-37100.

For further help and advice please contact Antrica on:  
 Email: [support@antrica.com](mailto:support@antrica.com)  
 Phone: +44 1628 626098

## Document info

Version	date	author	Comments
0.1	28-Sep-22	David M	2.0.5 update via webpage
0.2	3-Jan-23	David M	Grammar / spelling corrections

## 1. Update file

The update file is a file with the extension .swu, i.e. spotbox-full\_release\_2.0.5.swu

To get the update file go to <https://antrica.com/> -> search for ANT-37100 -> go to the [ANT-37100 product page](#) -> Scroll down to find "Product Info & Downloads" -> Firmware -> Dropbox™ window opens -> Current Firmware -> 2.0.5\_firmwareFiles -> spotbox-full\_release\_2.0.5.swu.

The last 2 steps may be different for later version of firmware, but you need to be in the "Current Firmware" folder

Store the .swu file on your PC

Please this update file is only compatible with the ANT-37100 (AKA spotbox2) and **not** the ANT-37000 / ANT-37000A (AKA Spotbox4K) or the ANT-37500 (AKA Spotbox3)

## 2. Update

**Pease note some of the images have been scaled to enable the points of interest to be seen clearly.**

The update process is described below. In the first section is the web page actions and responses, and in the next section is the monitor output.

NOTE is may be required to power cycle the ANT-37100 during the update process. This is only required if a particular screen is seen on the monitor AND after the update is completed.

### 2.1. Webpage

1. On the webpage go to SYSTEM tab and click "Choose File", as shown in Figure 1.
2. A pop-up windows appear and allow you to navigate to the location of the update file you have previously downloaded, in this example "spotbox-full\_release\_2.0.5.swu", see Figure 2.
3. Select the file then click "Open" and the pop-up will close
4. and that you back to the SYSTEM tab, and click "LOAD UPDATE", see Figure 3
5. A pop-up window appears to confirm update, click "OK", see Figure 4
6. The browser then shows a spinning "wheel", as shown in Figure 5

Figure 1 : SYSTEM -> Choose File

# Spotbox

## ANTRICA

HOME CAMERAS DISCOVER DISPLAY NETWORK SYSTEM LOGOUT

### Update password

**User**  
admin

**Password**

**Password (repeat)**

UPDATE

### System update

Choose File No file chosen

LOAD No file chosen

### System config

Choose File No file chosen

LOAD CONFIG SAVE CONFIG

### System restart

REBOOT FACTORY RESET

### HTTP

Enable https

UPDATE

### SSL

**ssl key**  
Choose File No file chosen

**ssl certificate**  
Choose File No file chosen

LOAD SSL RESET SSL

### System version

spotbox 2.0.2 - ANT-10740 - Tue 11 May 18:32:33 BST 2021 - Tue Sep 27 10:11:35 2022

Figure 2 : Select update file

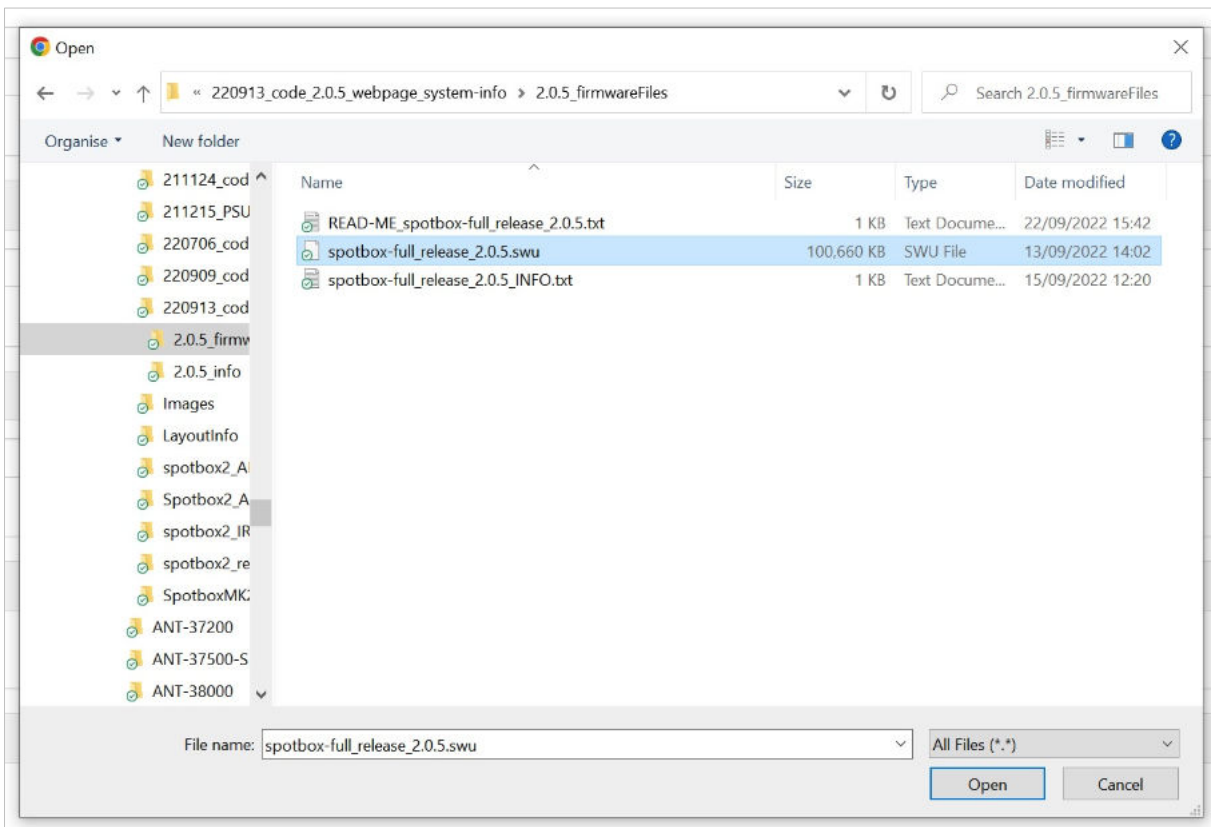


Figure 3 : select "LOAD UPDATE"

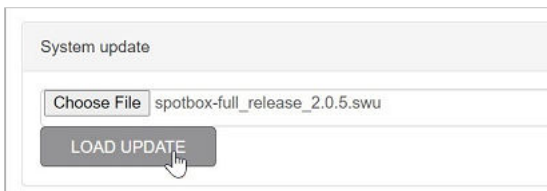


Figure 4 : Pop-up window to confirm to update

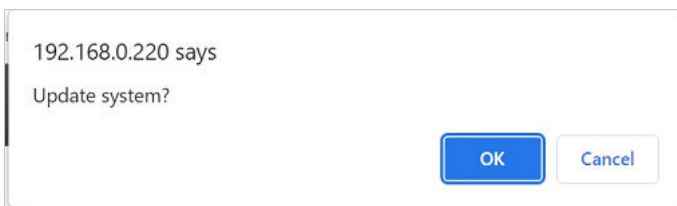
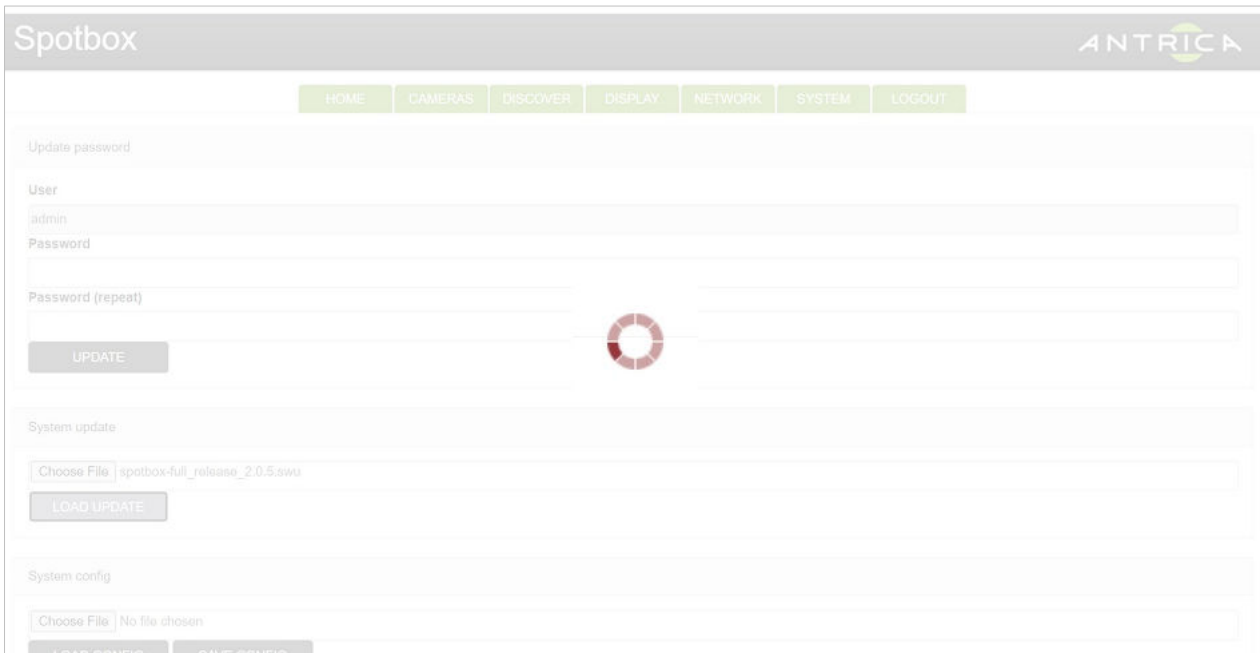


Figure 5 : Update spinning "wheel"



## 2.2. Monitor

1. If at any time during the update process the "debug screen" is seen, as shown in Figure 6, wait a few seconds then power cycle the Spotbox. Then wait until the Spotbox has fully booted and confirm the current version of installed firmware. This can be either from the web page on the SYSTEM tab at the bottom, see Figure 1 in this example the version is 2.0.2, or from the monitor in the red text at the bottom of the screen, see an example of version 2.0.5 in Figure 11.
2. There will be several styles of the Antrica logo on a white screen, see Figure 7 for examples
3. During actual update, a spinning "wheel" is seen, see Figure 8
4. After the update there is time when the POST tests are done, as shown in Figure 9. The progress bar indicates how long if left in this section.
5. The Spotbox will then boot normally, see Antica logo screen, Figure 10
6. At the bottom of the screen is the firmware version and current IP address. In this example the Spotbox was already configured, see Figure 11
7. Power cycle the Spotbox to ensure the firmware install is stall

Figure 6 : debug screen

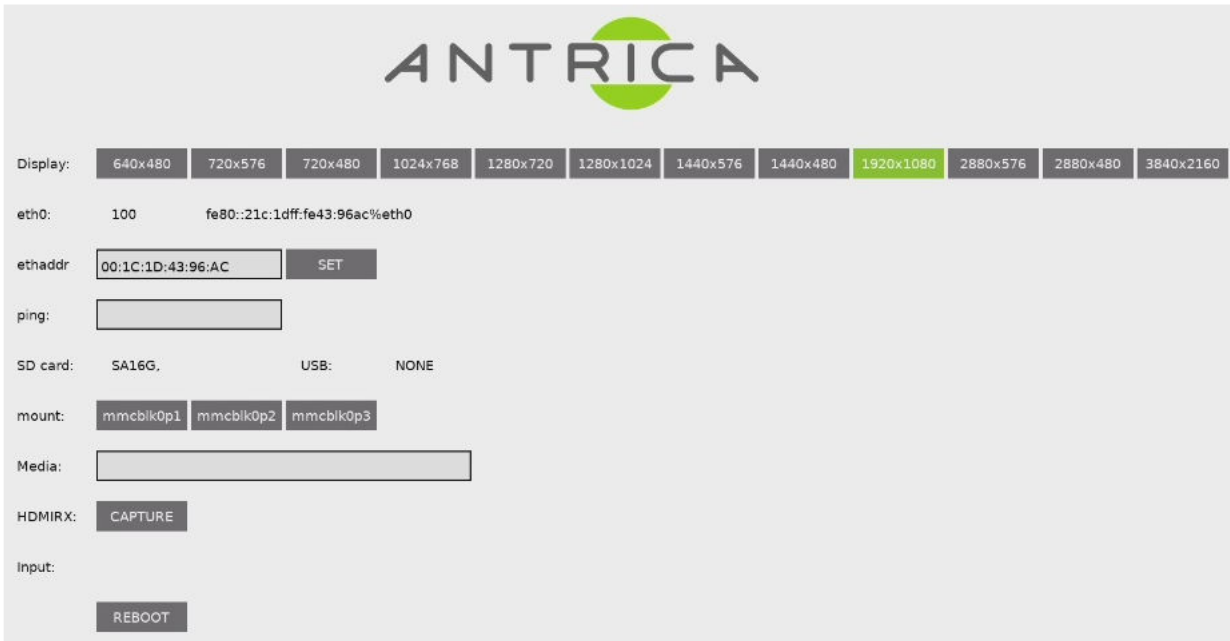


Figure 7 : Examples of Antrica Logo seen on monitor

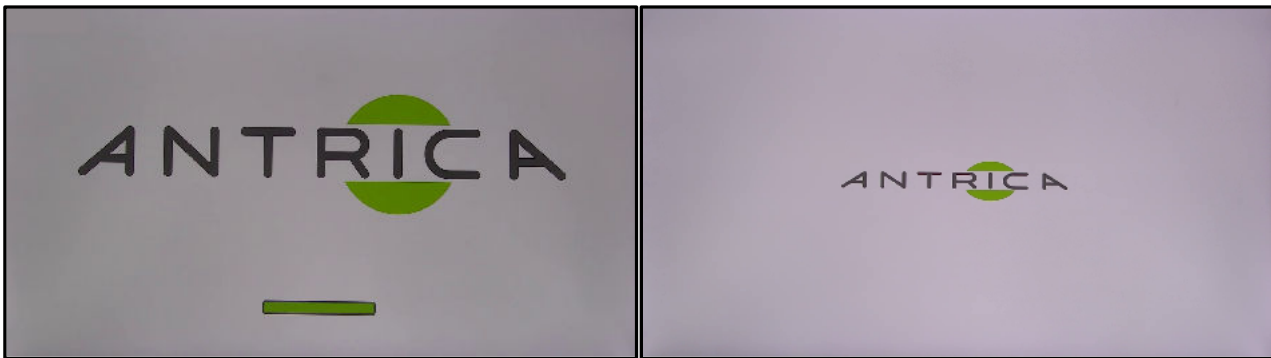


Figure 8 : updating spinning "wheel"

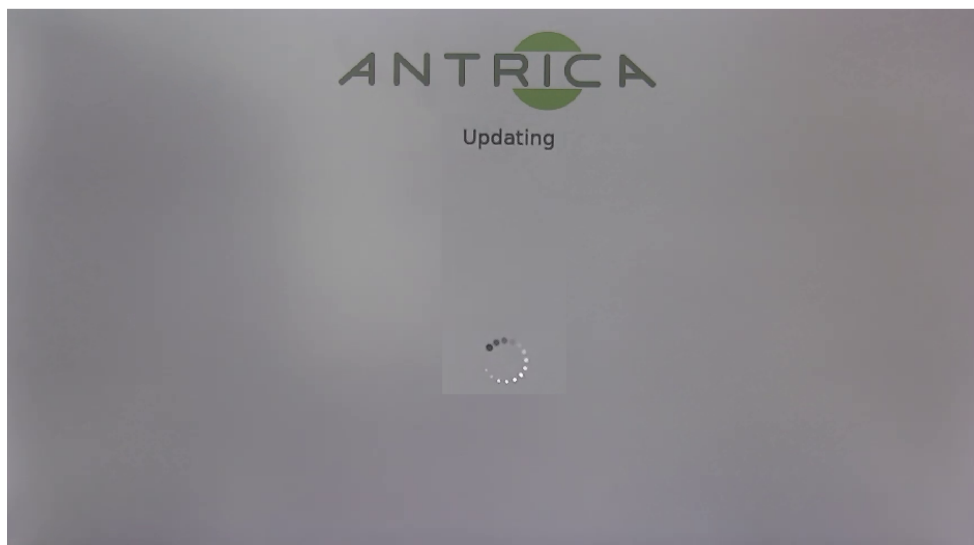


Figure 9 : POST tests after update



Figure 10 : System starting info



Figure 11 : Update complete and Spotbox booted

