

# ANTRICA

## ANT-2XXX QUICK START GUIDE



Applicable to ANT-2200/2204/2400/2400B/2500/2504



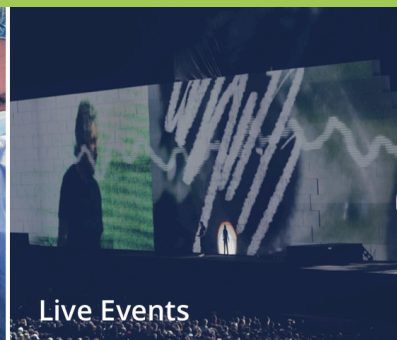
CCTV & Security



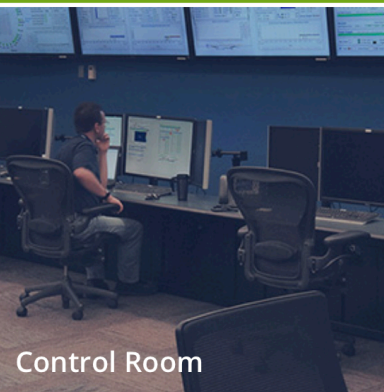
Broadcast



Medical



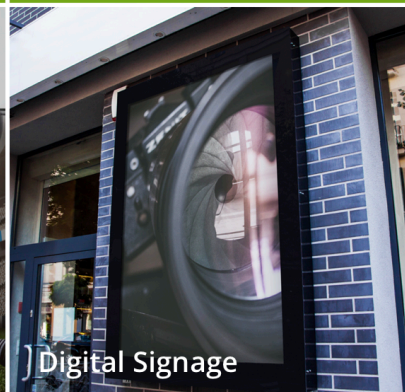
Live Events



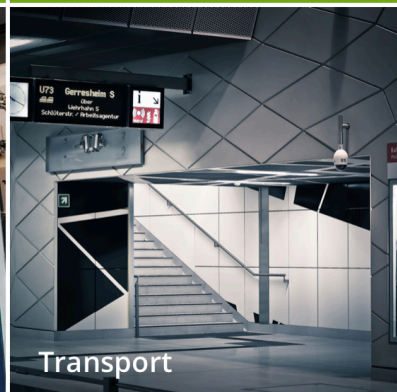
Control Room



Sport Video



Digital Signage



Transport



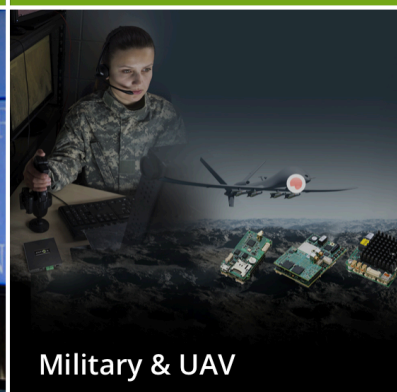
Betting



Worship



IPTV



Military & UAV

# Contents

- 1 Whats in the box
- 2 Setting up the ANT-2XXX
3. Configuring the ANT-2XXX
  - 3.1 HDMI Main
  - 3.2 HDMI Main Streaming Settings
    - RTSP MPEG-TS HTTP and RTMP
  - 3.3 HDMI Main Other Settings
  - 3.4 HDMI Secondary Stream Settings
4. Audio Settings
5. Help and Further Support
  - 5.1 ONVIF Support
  - 5.2 Other Information

**Please Note! This example shows setting of HDMI but setting HD-SDI models is the same. Also H265 encoders will have an additional pull down to select H265 or H264. Other than this settings are all the same**

All ANT-2XXX series are a range of H264 or H265 HDMI encoders either 1 or 4 channels. 4 channel encoders are actually 4 individual 1 channel encoders so they can be treated as 1 channel units.

## 1. What's in the Box

The ANT-2XXX box contains

- ANT-2XXX encoder
- 12 Volt Power converter (requires an IEC AC mains lead)  
(4 channel encoders have built in power supplies )
- UK/EU/USA or China IEC 110/240v AC Lead (depending on your location)

## 2. Setting up the ANT-2XXX

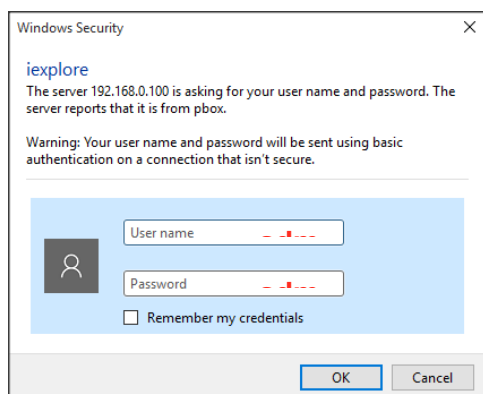
Connect the ANT-2XXX to a laptop or PC via an Ethernet switch using standard ethernet cables.

Connect the input Video source using an HDMI video cable (depending on model you have chosen ,HDSDI if applicable).

Connect the 12 volt power input (Or mains cable for 4 channel units) and switch on. The ANT-2XXX will take approximately 2 minutes to boot up. You will see 2/3 LEDs. On powering the Red power LED is ON, after boot up the Green Status LED will be on . The Orange light will illuminate occasionally

You are now ready to setup the ANT-2XXX Encoder

## 3. Configuring the ANT-2XXX



The ANT-2XXX default IP address is **192.168.1.168** . (Four channel units come with 4 IP addresses

**192.168.1.200/201/202/203**) Please set the laptop/PC Ethernet IP address to be in the same sub-domain e.g **192.168.1.XXX**

Open Chrome or other up to date browser to just view settings and browse to **192.168.1.168** or

**200/201/202/203 as applicable**

You will be asked to LOGIN: **User : admin** , **password: admin**

**NOTE! 4 channel units if factory reset will default to 192.168.1.168**

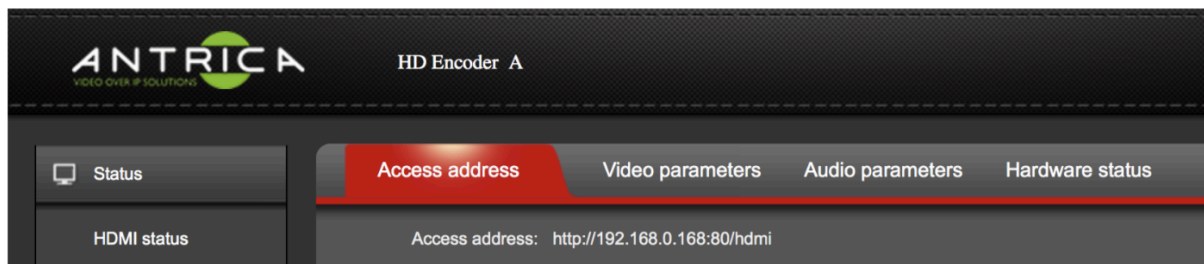
## 3.1 HDMI Main



On the Side Tab you will find two stream settings , HDMI Main and HDMI 2nd. Click HDMI main to set up primary streaming. Default is HTTP streaming all other modes disabled.

## 3.2 HDMI Main> Streaming Settings:

This section allows you set the encoder streaming mode to HTTP RTSP MPEG-TS or RTMP streaming. HTTP streaming is set as default . The Streaming URL can always be found in the status menu. Only one mode can be enabled at any one time.



**Standard Default URLs are as follows**

**http://192.168.1.168:80/hdmi** for http streaming

**rtsp://192.168.1.168:554/hdmi** for RTSP streaming

**udp://@:1234** for MPEG-TS Unicast

**udp://@227.2.2.7:1234** for Multicast MPEG-TS streaming

For RTMP you need 3 pieces of information

RTMP Server IP: video.mudu.tv

RTMP app name: 8eano

RTMP stream name: zvrut9

rtmp://video.mudu.tv/ 8eano/zvrut9

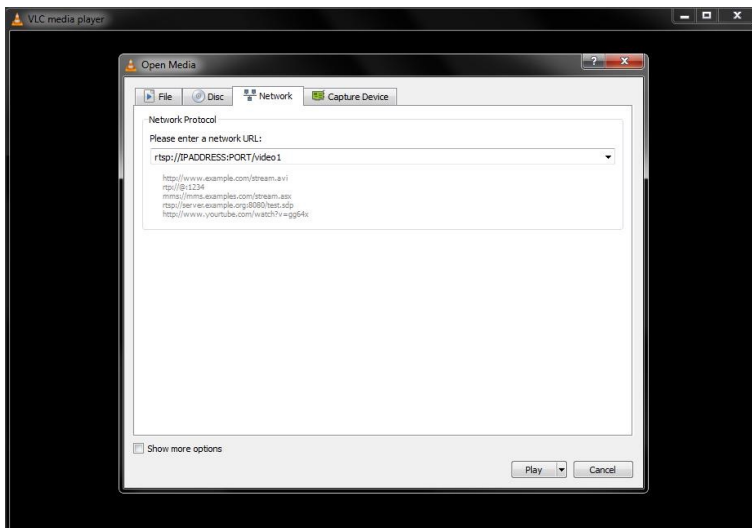
After any changes always click **APPLY**



channel name : <input type="text" value="chan"/> H.264 Level : <input type="text" value="main profile"/> Encoding frame rate : <input type="text" value="30"/> [5-30] Bitrate control : <input type="text" value="cbr"/> Key interval : <input type="text" value="30"/> [5-200] Encoded size : <input type="text" value="auto"/> Bitrate : <input type="text" value="5000"/> [16-12000] Package : <input type="text" value="B"/> Buffer Mode : <input type="text" value="A"/>	Codec Functions
PMT ID : <input type="text" value="260"/> [256-3800] Transport ID : <input type="text" value="265"/> [256-3800] Stream ID : <input type="text" value="264"/> [256-3800]	
HTTP : <input type="text" value="/hdmi"/> <input type="text" value="Disable"/> Format: /hdmi (begin with "/") HTTP Port : <input type="text" value="80"/> [1-65535]	HTTP Settings
RTSP : <input type="text" value="/hdmi"/> <input type="text" value="Enable"/> Format: /hdmi (begin with "/") RTSP Port : <input type="text" value="554"/> [1-65535] RTSP TCP : <input type="text" value="TCP"/>	RTSP Settings
unicast IP : <input type="text" value="192.168.1.123"/> <input type="text" value="Disable"/> unicast port : <input type="text" value="123"/> [1-65535] Multicast IP : <input type="text" value="238.0.0.1"/> <input type="text" value="Disable"/> Multicast port : <input type="text" value="1234"/> [1-65535]	MPEG TS Settings
RTMP server ip : <input type="text" value="192.168.1.123"/> <input type="text" value="Disable"/> RTMP server port : <input type="text" value="1935"/> [1-65535] RTMP user name : <input type="text"/> RTMP password : <input type="text"/> RTMP app name : <input type="text"/> RTMP stream name : <input type="text"/>	RTMP Settings
ONVIF : <input type="text" value="Enable"/> <input type="button" value="Apply"/>	

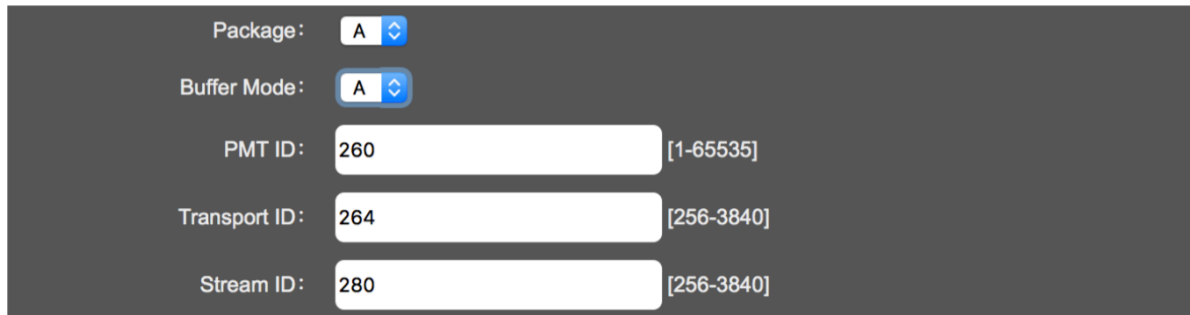
To Enable ONVIF discovery select "Enable" and Apply

In VLC player open a Network stream (see URLs page 4)



### 3.3 HDMI Main Other settings :

Here you can change settings to do with MPEG-TS streams and also adjust the encoder for optimum decoding using FFMPEG or VLC based players.



The screenshot shows a configuration panel with the following settings:

Package :	<input type="text" value="A"/>	
Buffer Mode :	<input type="text" value="A"/>	
PMT ID :	<input type="text" value="260"/>	[1-65535]
Transport ID :	<input type="text" value="264"/>	[256-3840]
Stream ID :	<input type="text" value="280"/>	[256-3840]

Package A or B: If using an FFMPEG based decoder use Package A , If using VLC based decoder use Package B.

Buffer Mode A or B : When using MPEG-TS streams : A=188\*7 and b=188\*7

PMT ID: When using MPEG-TS according to DVB rules the PMT PID can be set here.

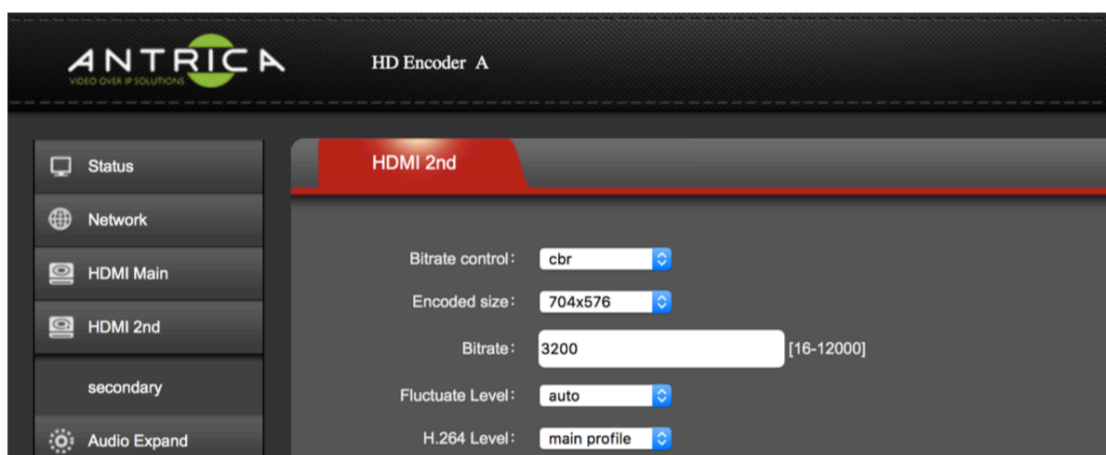
Transport ID : This is the MPEG-TS Transport ID which can be set by the user.

Stream ID : This is the MPEG-TS Stream ID setting

**Click Apply after any changes**

### 3.4 HDMI 2nd (Secondary stream)

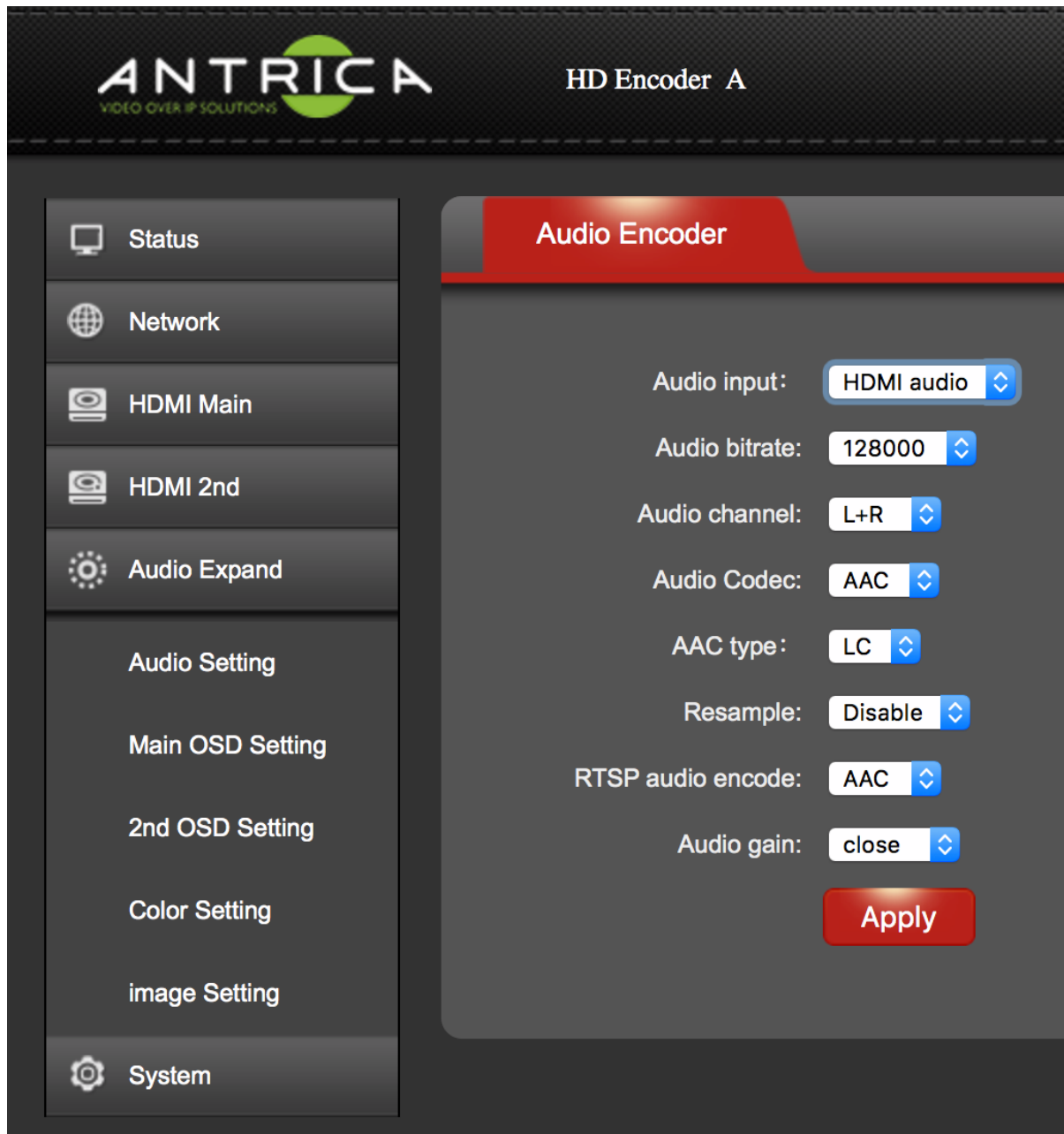
The secondary stream can be set in HDMI 2nd. Note the URLs for secondary stream are using **/hdmi\_ext** as opposed to **/hdmi** for the main stream. This can be changed as long as it is different to the main stream extension.



The screenshot shows the ANTRICA HD Encoder A interface with the following settings for the HDMI 2nd stream:

Bitrate control :	<input type="text" value="cbr"/>	
Encoded size :	<input type="text" value="704x576"/>	
Bitrate :	<input type="text" value="3200"/>	[16-12000]
Fluctuate Level :	<input type="text" value="auto"/>	
H.264 Level :	<input type="text" value="main profile"/>	

## 4.0 Audio Settings



**Audio Input:** Select line input (analogue jack) or embedded audio via HDMI input

**Audio Bitrate:** choose the bit rate for audio encoding

**Audio Channel:** Stereo Mono L or Mono R can be selected

**Audio Codec:** Choose AAC or MP3 (Note RTSP can be AAC or G711 PCM)

**AAC Type :** Choose LC or HE here

**Resample:** 32000 42100 resampling or disable.

**RTSP Audio:** Select G711 (ONVIF ) or AAC

**Audio Gain:** Adjust from +10 to -20dB

## 5.0 Help and Further Support

### 5.1 ONVIF Support

The ANT-2XXX series supports ONVIF Discovery and Streaming Only. It is NOT fully ONVIF S or G compliant but can be discovered as an ONVIF device on **Port 7070**

User name and password as per the log in credentials **admin admin** default

Also ONVIF needs to be “**Enabled**” see page 5

**http://192.168.1.168:7070/onvif/device\_service**

**admin admin** is the user and password for ONVIF , the same as log in credentials unless changed.

### 5.2 Other Information

Please visit our website [www.antrica.com](http://www.antrica.com) and browse to the product page (e.g ANT-2XXX ) where you can find a DOWNLOADS SECTION :

- application notes
- Full User manuals
- FAQs
- Firmware
- Other useful information
- More help Open up a Technical Support Ticket from the support page.

**Contact: [support@antrica.com](mailto:support@antrica.com)**

**Call : +44 1628 626098 x3**