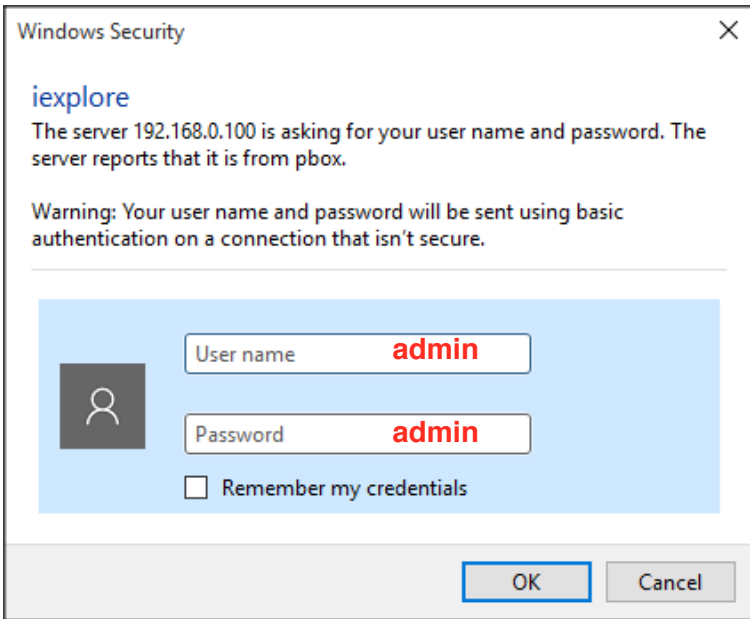




ANT-2504

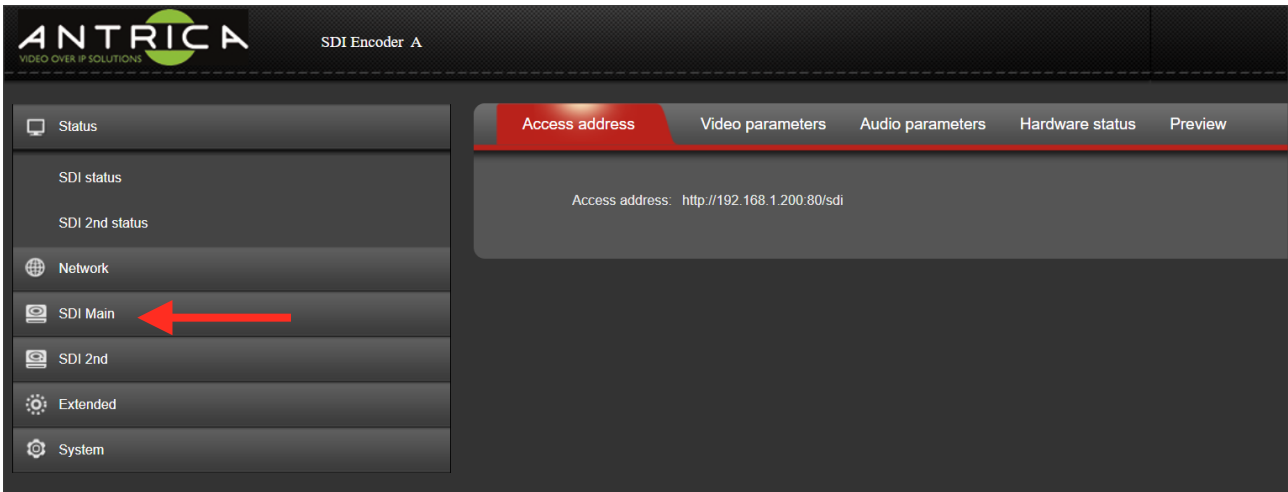
Quick Start Guide

Default IP - 192.168.1.200 /201/202/203 (4 Channel)
Entering Configuration settings in Internet Explorer -
Username & Password are **admin as shown below.**



RTSP SETUP

- 1) Select **SDI main** on the navigational bar (shown below), to configure the input SDI Main settings for the main stream.



2) To setup the RTSP streaming, amend the following (reboots may be required for settings to take effect) -

The screenshot shows the 'SDI Main' configuration page. The settings are as follows:

channel name:	chan
mirror control:	disable
flip control:	disable
aspect ration:	auto
Bitrate control:	cbr
Key interval:	30 [5-200]
Encoded size:	auto
Bitrate:	3200 [16-12000]
Fluctuate Level:	auto
H.264 Profile:	main profile
Encoding frame rate:	25 [5-60]
Package:	ffmpeg
Buffer Mode:	188x7
PMT ID:	260 [1-65535]
Transport ID:	264 [256-3840]
Stream ID:	280 [256-3840]
Program ID:	1
SDT name:	Service01
HTTP:	/sdi Enable Start with "/"
HTTP Port:	80 [1-65535]
RTSP:	/sdi Disable Start with "/"
RTSP Port:	554 [1-65535]
RTSP Authentication:	Disable
RTSP mode:	video+audio
RTSP TCP:	UDP
TTL:	16 [0-255]
unicast IP:	192.168.1.200 Disable [Support domain or ip format]
unicast port:	1234 [1-65535]
Multicast IP:	238.0.0.1 Disable
Multicast port:	1234 [1-65535]
RTP Server Ip:	192.168.1.123 Disable
RTP Port:	6666 [1-65535]
RTMP:	URL MODE Disable
RTMP mode:	video+audio
RTMP URL:	rtmp://

Red arrows point to the following settings:

- 1: HTTP Port (80)
- 2: RTSP Start with "/" (checked)
- 3: RTSP Port (554)
- 4: RTSP TCP (UDP)

1) The /SDI can be changed to fit your requirements, this will change how you enter the RTSP url in the decoding side, by default it's

rtsp://<ipaddress>:<554>/hdmi

2) You need to set to 'Enable' to allow the use of RTSP streaming.

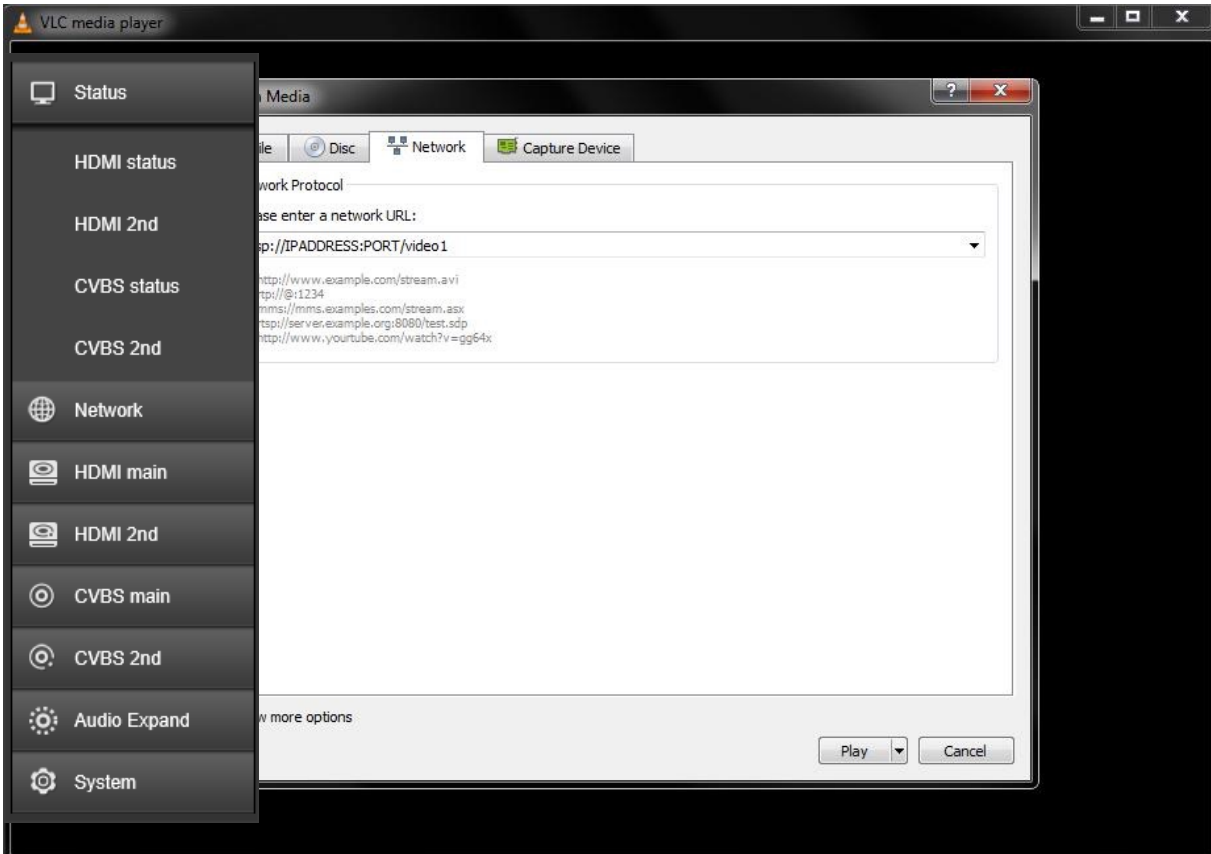
3) RTSP port can be changed, by default it will always be port 554.

4) The streaming method choice of TCP or UDP can be changed to fit your requirements.

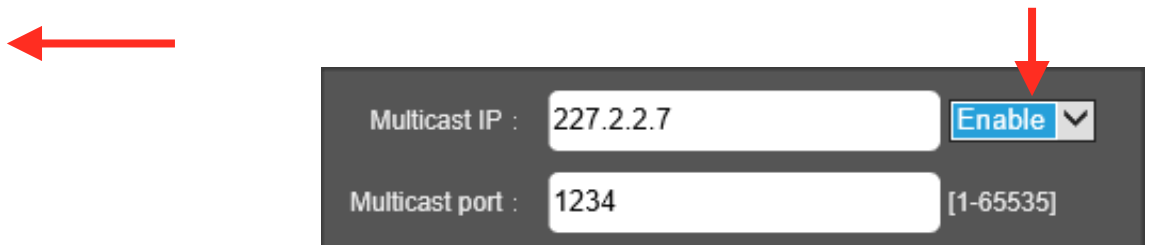
3) To decode the stream with VLC, Open Network Stream and type the URL ***rtsp://<ipaddress>:<port>/sdi*** (e.g ***rtsp://192.168.0.200:554/sdi***)

MPEG-TS SETUP





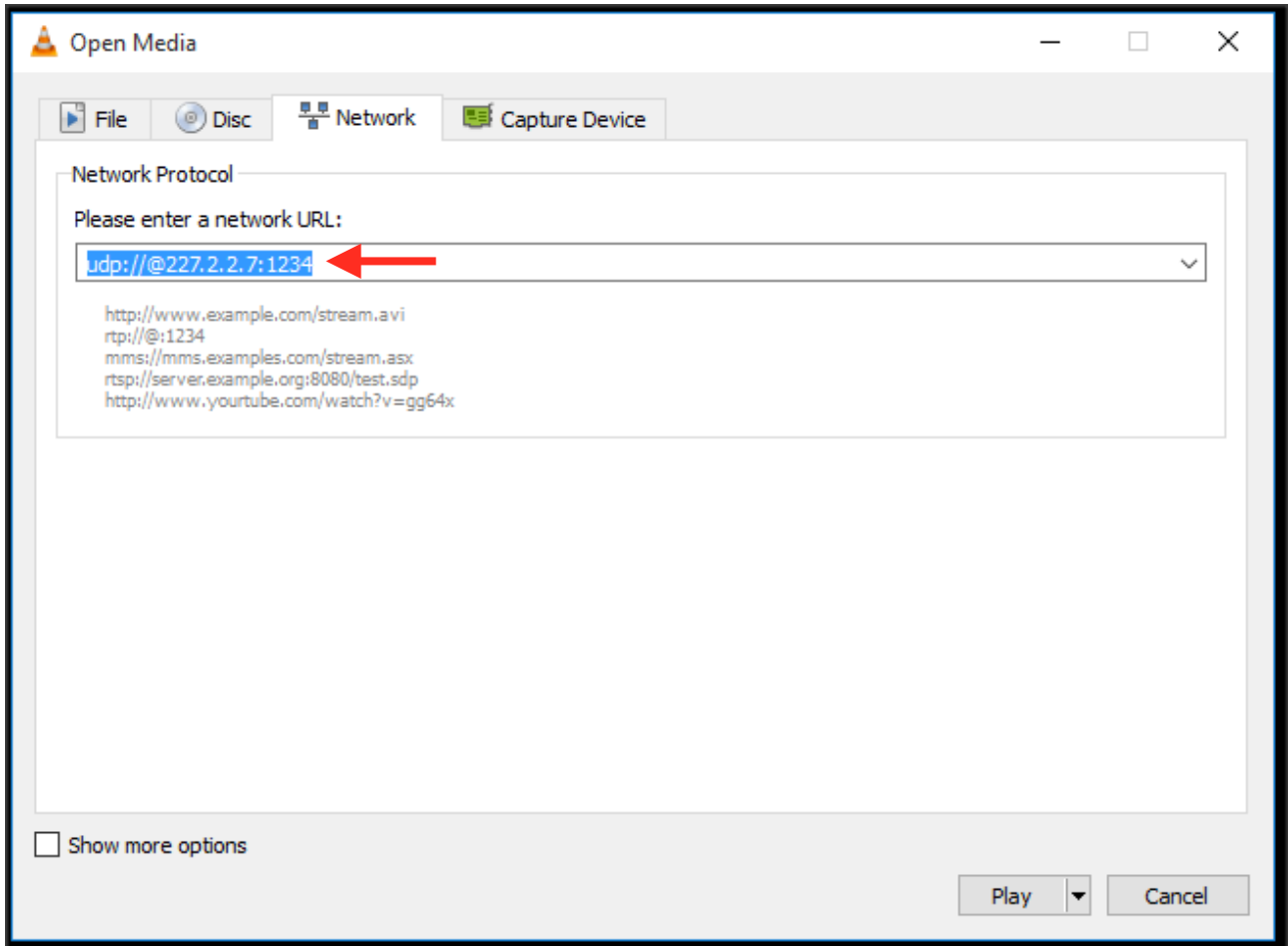
- 1) To setup multicast streaming, you need to first enable multicast in the **SDI main** settings.



- 2) After enabling the multicast streaming, and configuring your multicast address and port number, click apply (*a reboot is required*).

- 3) To open the stream in VLC player, Open Network Stream, and enter your multicast URL address (as shown below).

udp://227.2.2.7:1234



For further support please visit:

www.antrica.com

support@antrica.com

+44 1628626098