

ANT-35000 series encoder config save and load guide

Contents

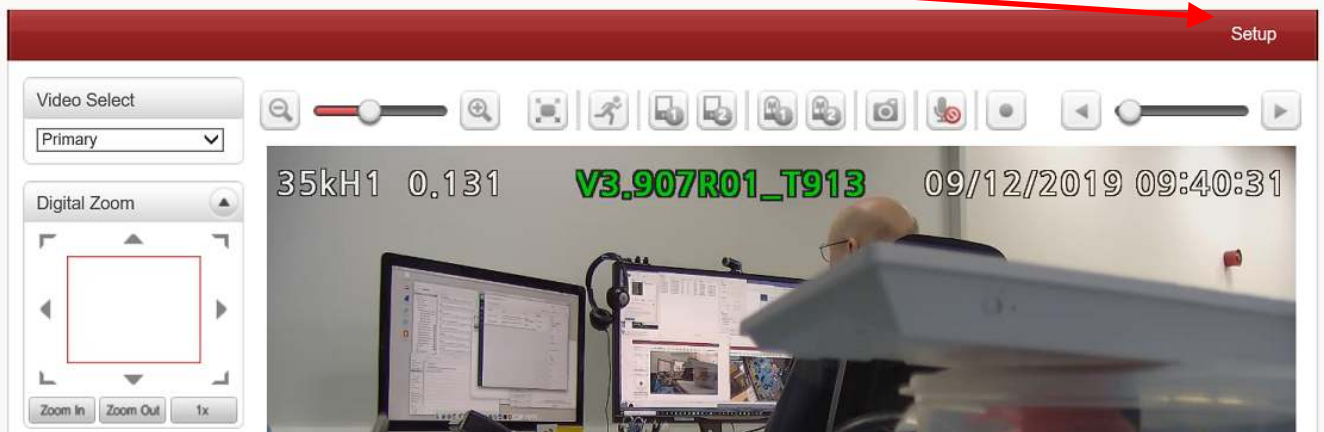
ANT-35000 series encoder config save and load guide	1
Document info	1
1. Config file save.....	2
2. Config file load	4

Document info

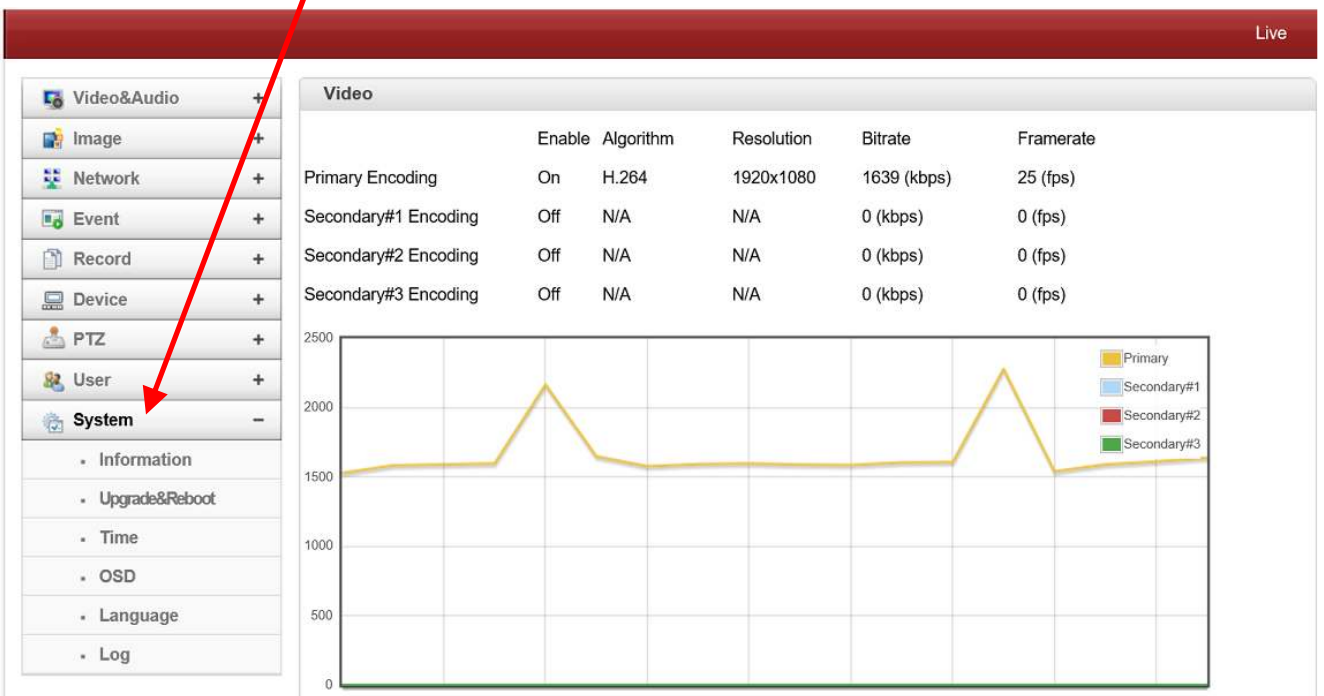
Version	date	author	Comments
1.0	9-Jan-20	David M	Initial release

1. Config file save

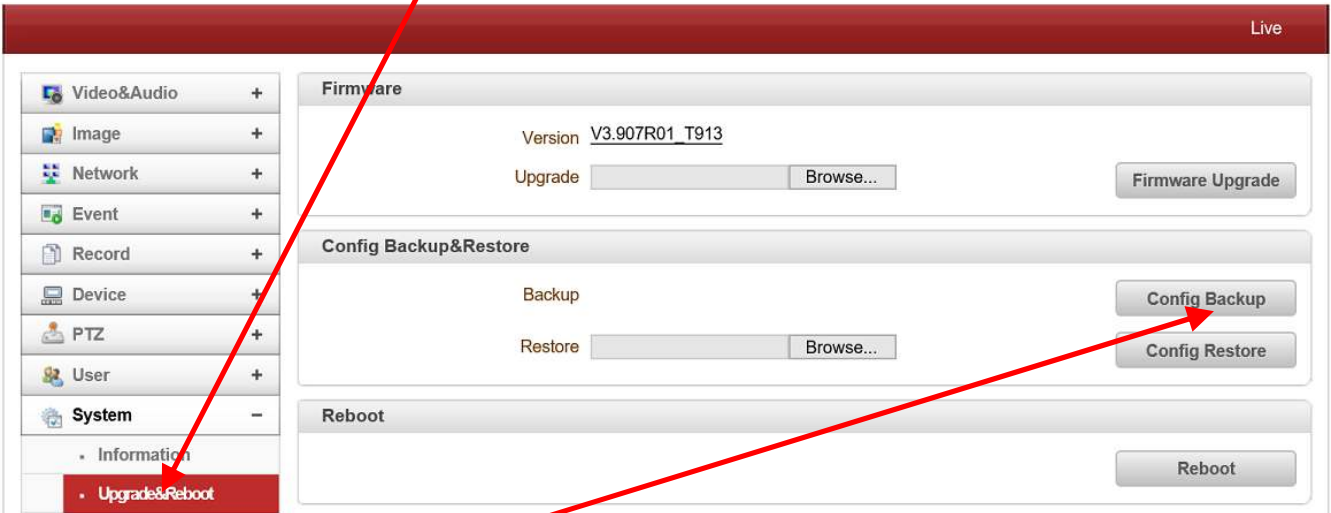
1.1. Open web page & Click "Setup"



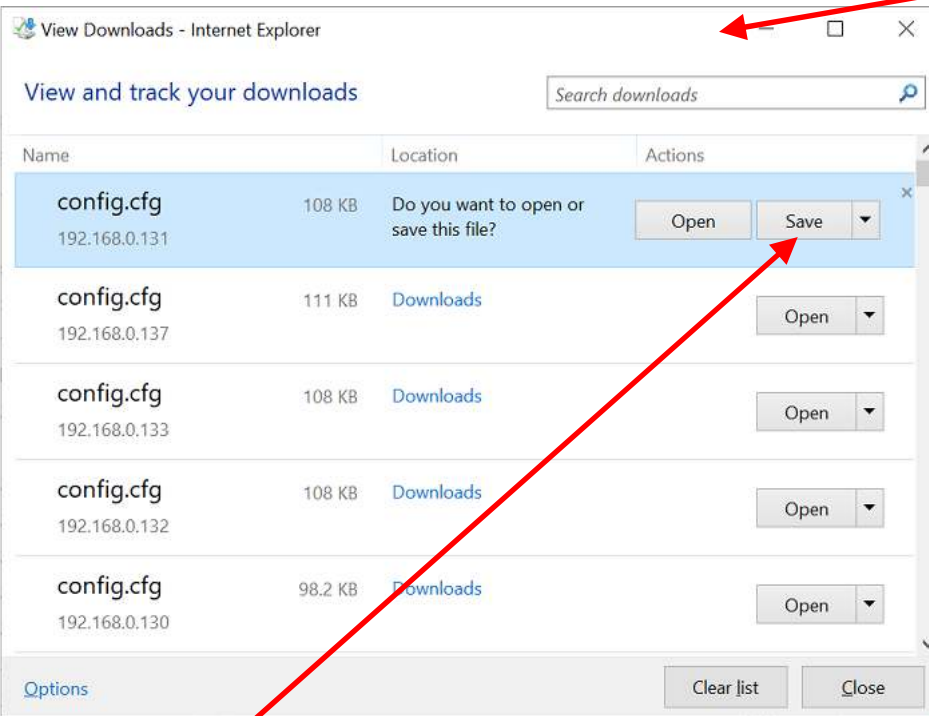
1.2. Click "system"



1.3. Click "Upgrade&Reboot"



1.4. Click "Config Backup" and an Internet explorer popup window appears



1.5. Click "Save" and the config file will be saved to your default downloads location, with the name "config.cfg"

For PC this could be:

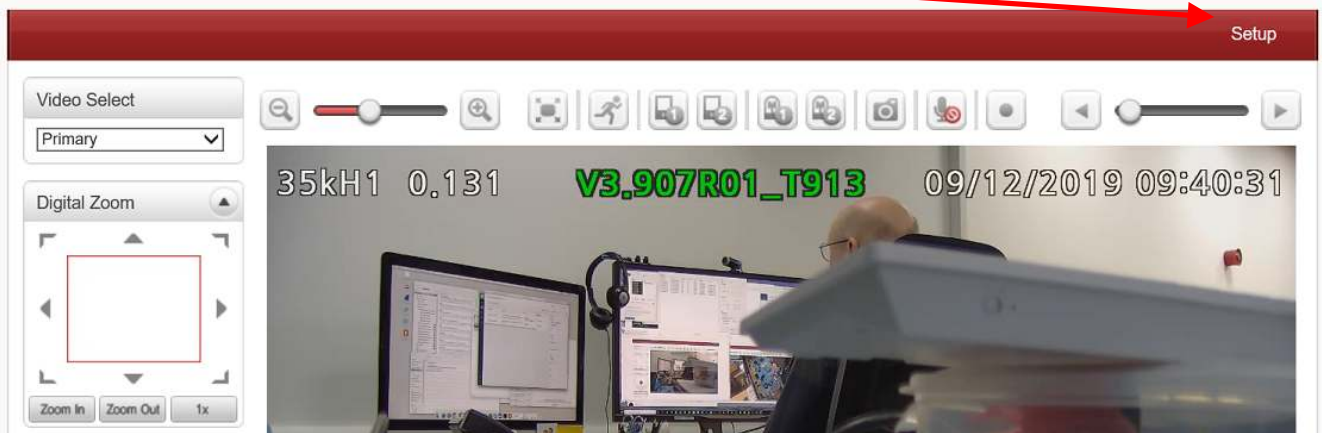
C:\Users\\Downloads

Where<User ID> will be the account name used to log in the PC

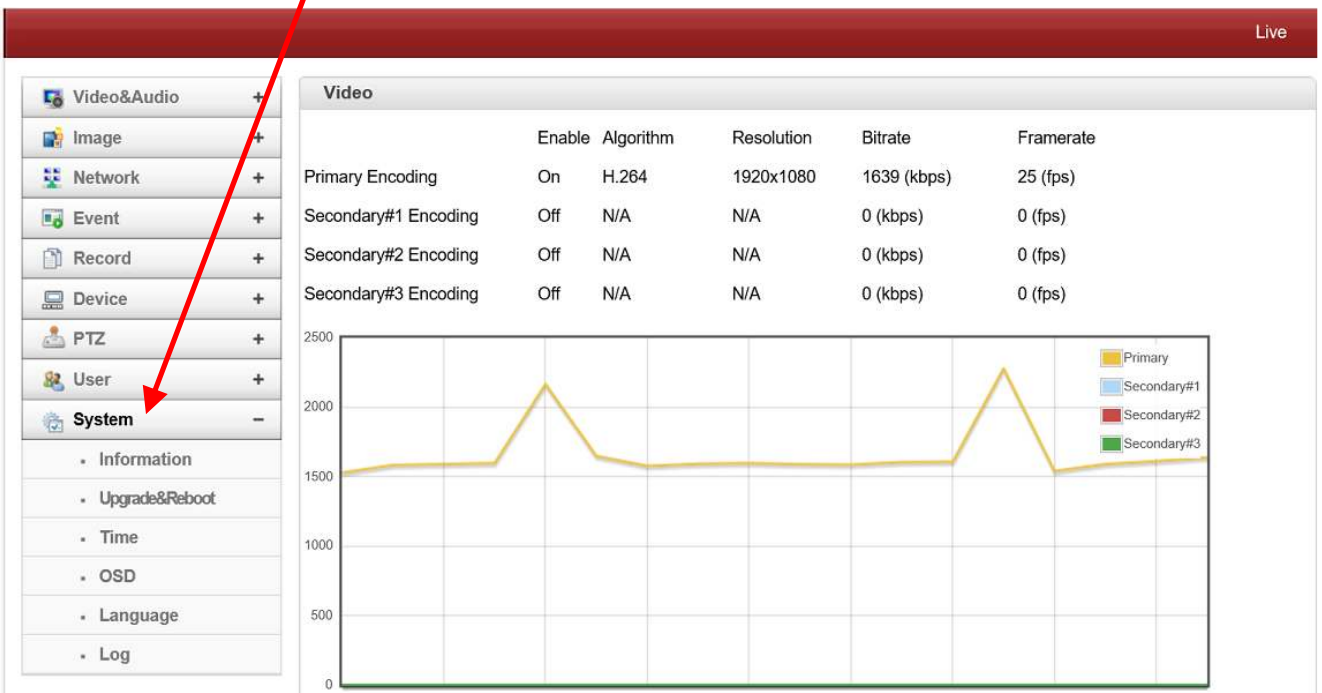
2. Config file load

The load config file assume the new config is using the same IP address as the current IP setting of the encoder.

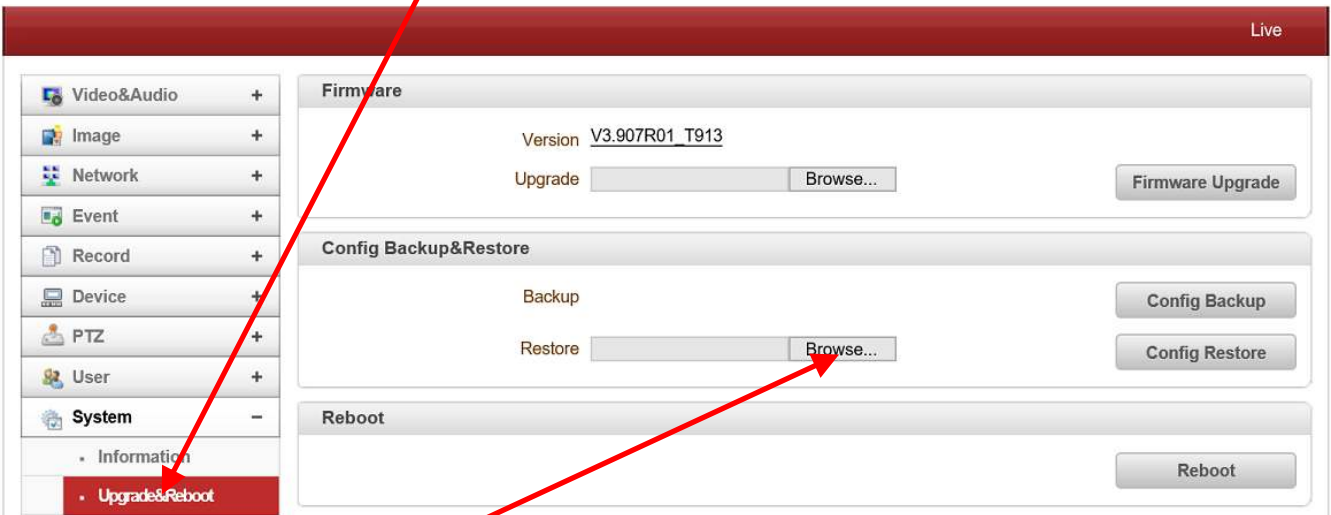
2.1. Open web page & Click "Setup"



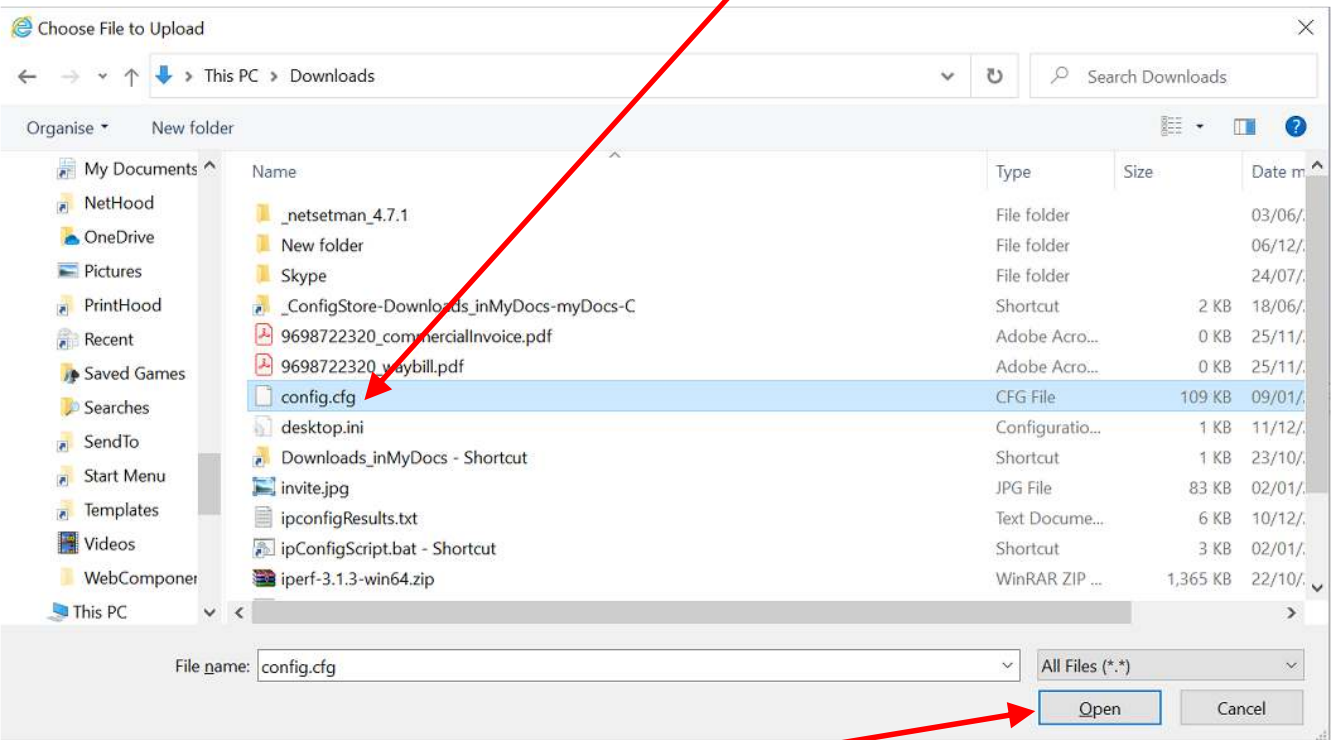
2.2. Click "system"



2.3. Click "Upgrade&Reboot"

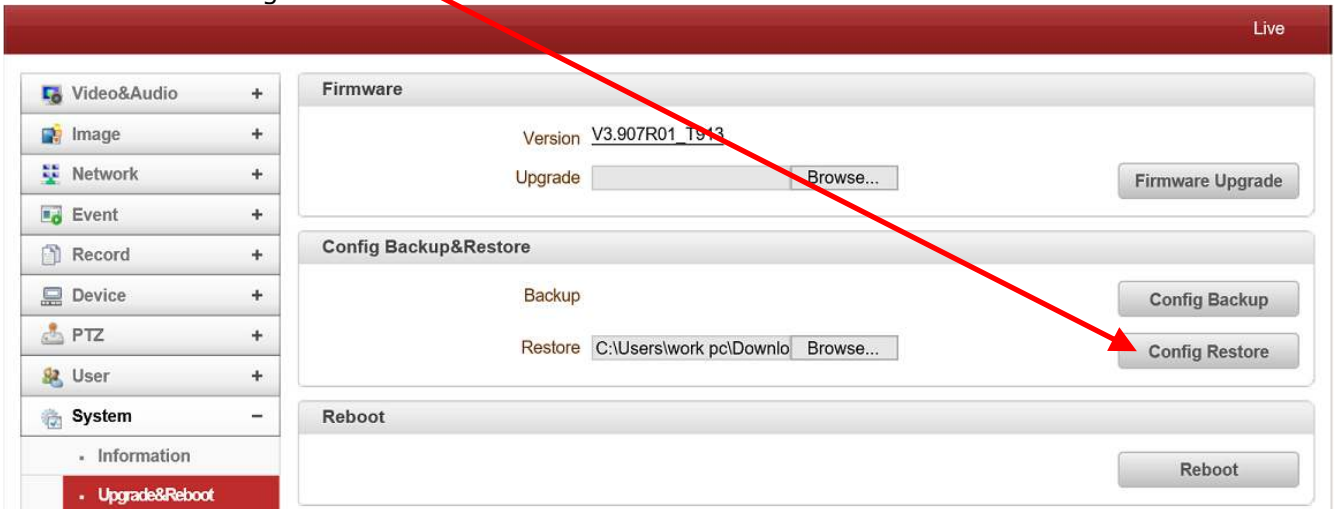


2.4. Click "Browse" and navigate to the required .cfg file

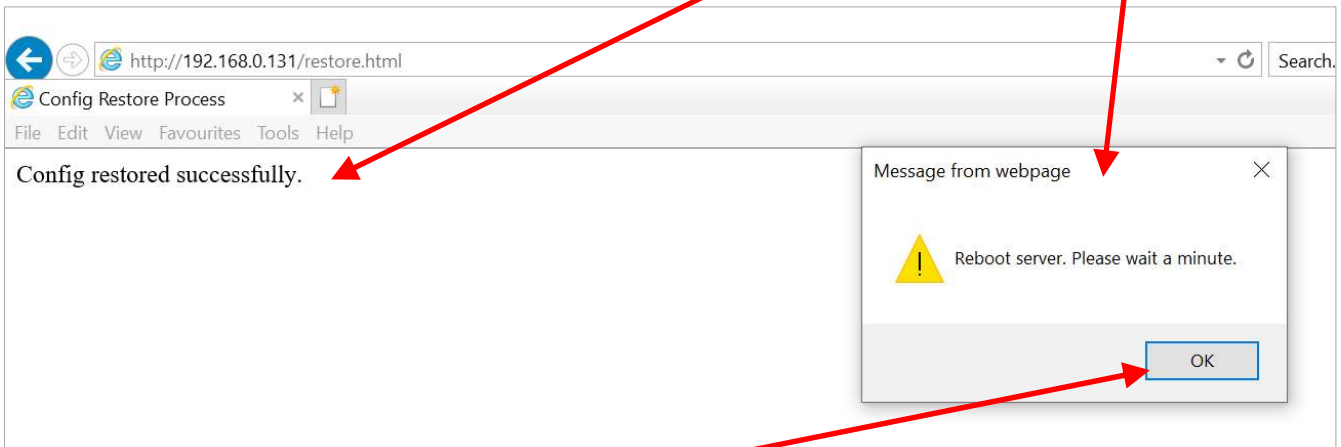


2.5. Select file then Click "Open"

2.6. Click "Config Restore"

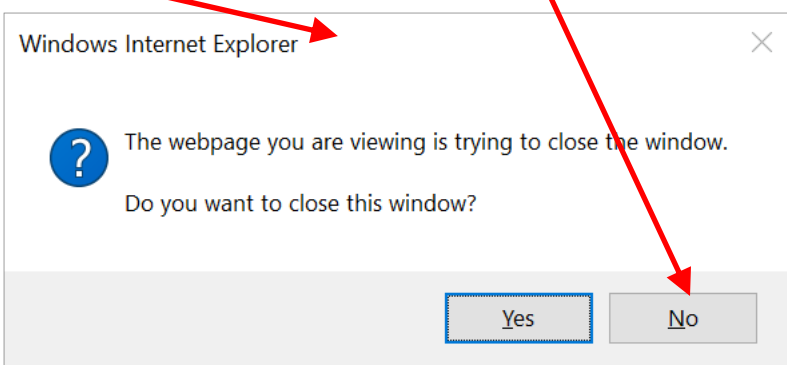


2.7. Internet Explorer show the message "Config restored successfully" and a pop-up message is show.



2.8. Click "OK" on the popup

2.9. Another pop-up window appears, Click "NO" on this window



2.10. Remove the "restore.html" from internet explorer address bar (see the image in 2.7 above). The web GUI now shows the "Live" web page, as shown in 2.1 .

IF the IP address of the config file is different for that of the encoder at the start of the config load section, Ture Manger maybe require to find the IP address of the encoder.