

# Genetec Security Centre (GSC) 5.7 and ANT-35000A

## Contents

- Genetec Security Centre (GSC) 5.7 and ANT-35000A ..... 1
- Overview ..... 1
- Document info ..... 1
- 1. Version used in this example..... 2
  - 1.1. Genetec 5.7 ..... 2
  - 1.2. ANT-35000 ..... 2
- 2. ANT-35000 setup within GSC ..... 2
  - 2.1. Genetec 5.7 Config Tool ..... 2
    - 2.1.1. setup ANT-35000 as a camera ..... 3
    - 2.1.2. To view live video within GSC config tool ..... 5
  - 2.2. To view video via GSC Security Desk ..... 6

## Overview

This guide to is provide advise on how to add and ANT-35000 series encoder to Genetec Security Centre 5.7.

The instructions are not detailed, but are intended to give advice / overview on how to “incorporate” the IP video from the ANT-35000 encoder into the Genetec Security Centre.

For further help and advice please contact Antrica on:  
 Email: [support@antrica.com](mailto:support@antrica.com)  
 Phone: +44 1628 626098 ext 3

## Document info

Version	date	author	Comments
1.0	28-Sep-18	David M	first pass use of Genetec 5.7 SR2
1.1	28-Sep-18	David M	Attempt to get HD resolutions
2.0	28-Apr-20	David M	Reformatted and made into user guide

# 1. Version used in this example

## 1.1. Genetec 5.7

Version 5.7 SR2 (5.7.607.140)

## 1.2. ANT-35000

Tested with code version V3.803B03 and V3.708B01.  
The actual model used for testing is a ANT-35000A.

# 2. ANT-35000 setup within GSC

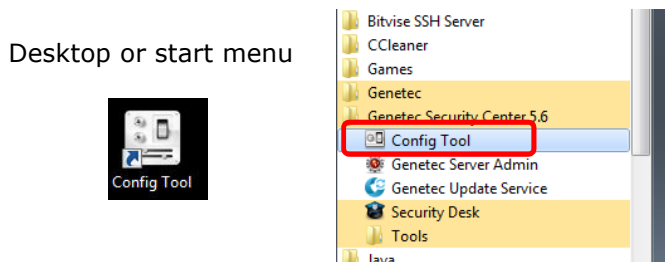
The ANT-35000 has been factory reset. **This required to remove any previous configuration of any VMS's.** The ANT-35000 is then setup as required; set source as HDMIP60 and resolution as 1920x1080. The ANT-35000 is configured with 4 streams, but only one is possibly required.

Figure 1 : ANT-35000 with only 4 streams configured

Video					
	Enable	Algorithm	Resolution	Bitrate	Framerate
Primary Encoding	On	H.264	1920x1080	3336 (kbps)	29 (fps)
Secondary#1 Encoding	On	H.264	1280x720	981 (kbps)	29 (fps)
Secondary#2 Encoding	On	H.264	720x480	468 (kbps)	29 (fps)
Secondary#3 Encoding	On	H.264	640x480	493 (kbps)	29 (fps)

## 2.1. Genetec 5.7 Config Tool

Figure 2 :Startup "config tool"



### 2.1.1. setup ANT-35000 as a camera

Figure 3 : Config tool - > Tasks -> Video

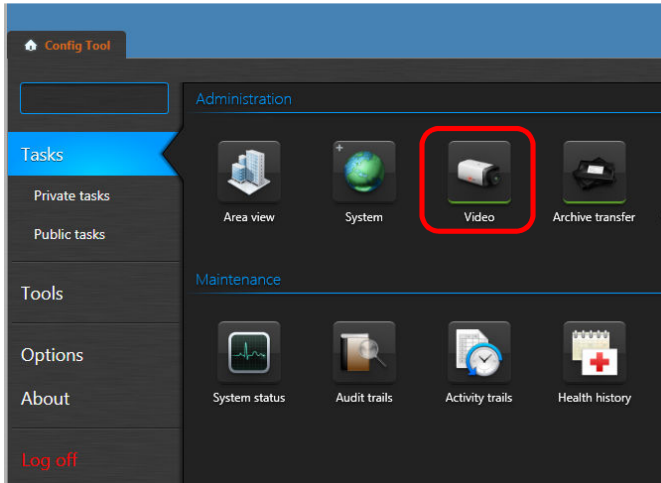
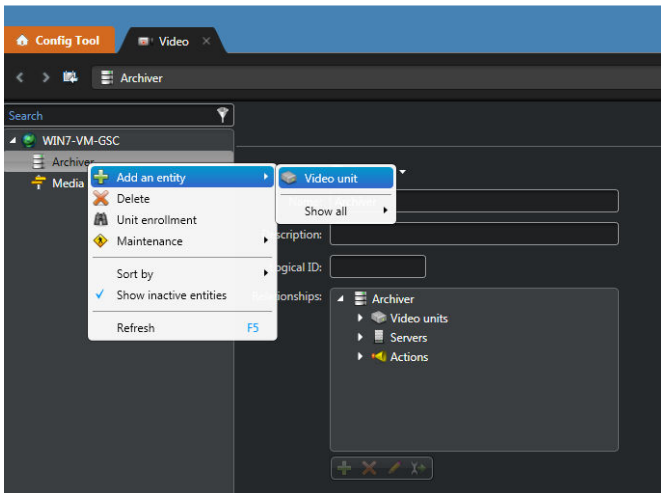
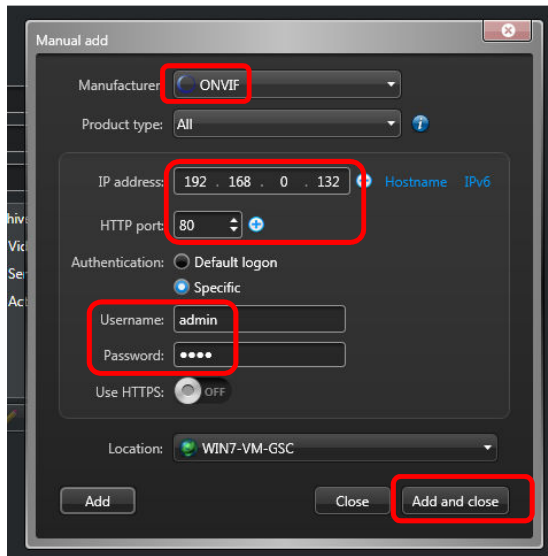


Figure 4 : Archiver -> Add an entity -> Video unit



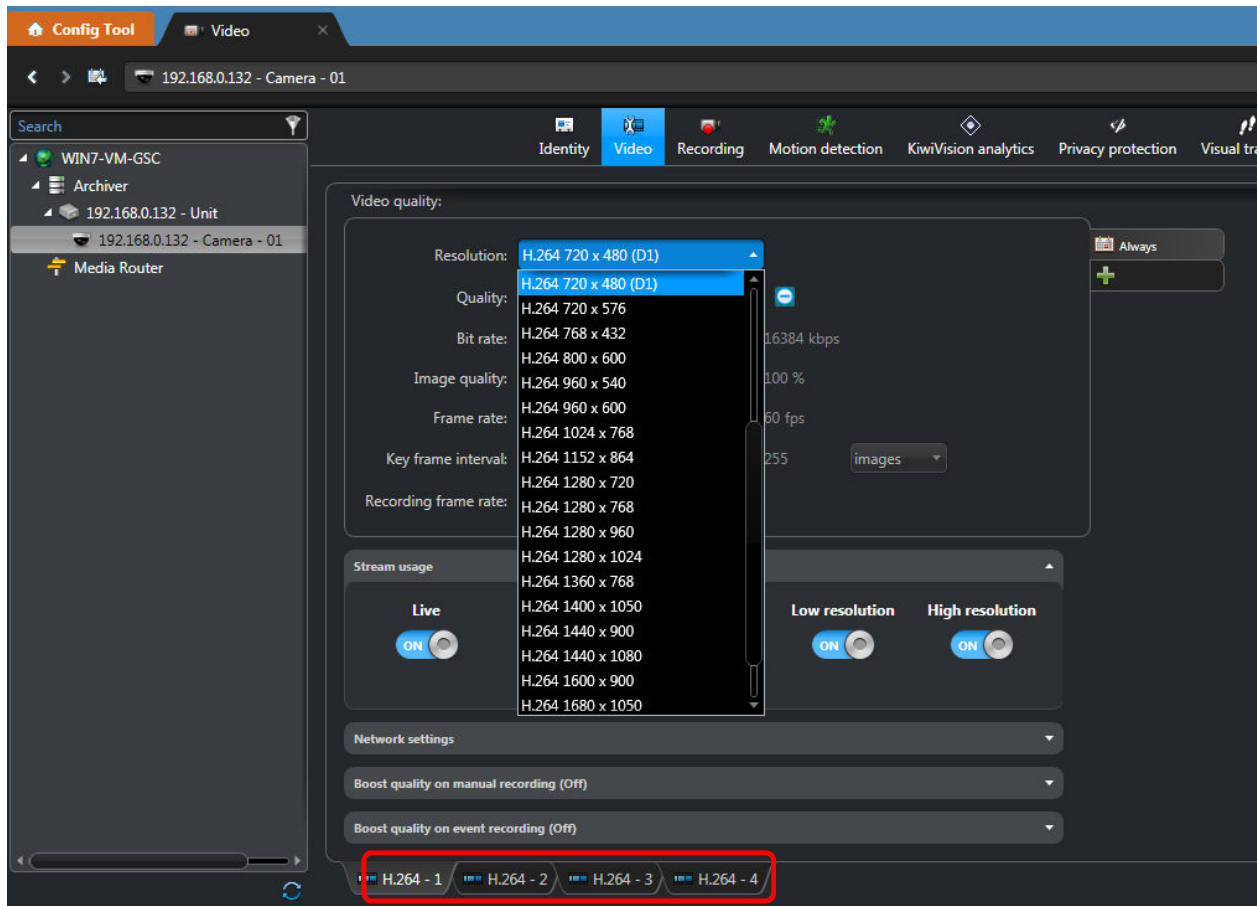
The ANT-35000 is an ONVIF device and IP address, access port (in this case 80), username and password are added manually

Figure 5 : "Manual add" of details



The require resolution can be set within GSC, but GSC can only use the highest set or any lower resolution. So for example if the ANT-35000 is set at 1280x720, the resolution of 1920x1080 will not appear in this drop down list.

Figure 6 : complete resolution list



The 4 tabs are for the 4 streams from the ANT-35000, as used in this example.

## 2.1.2. To view live video within GSC config tool

Figure 7 : GSC Visual tracking

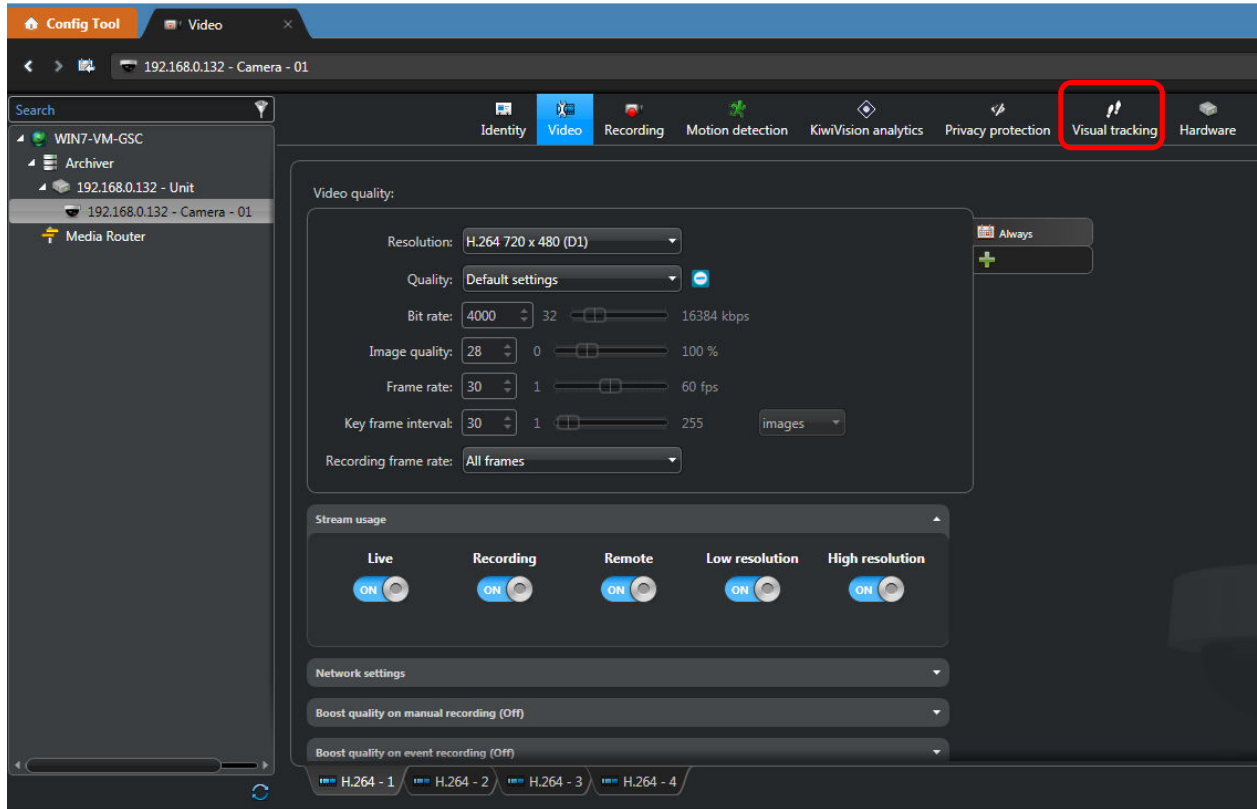
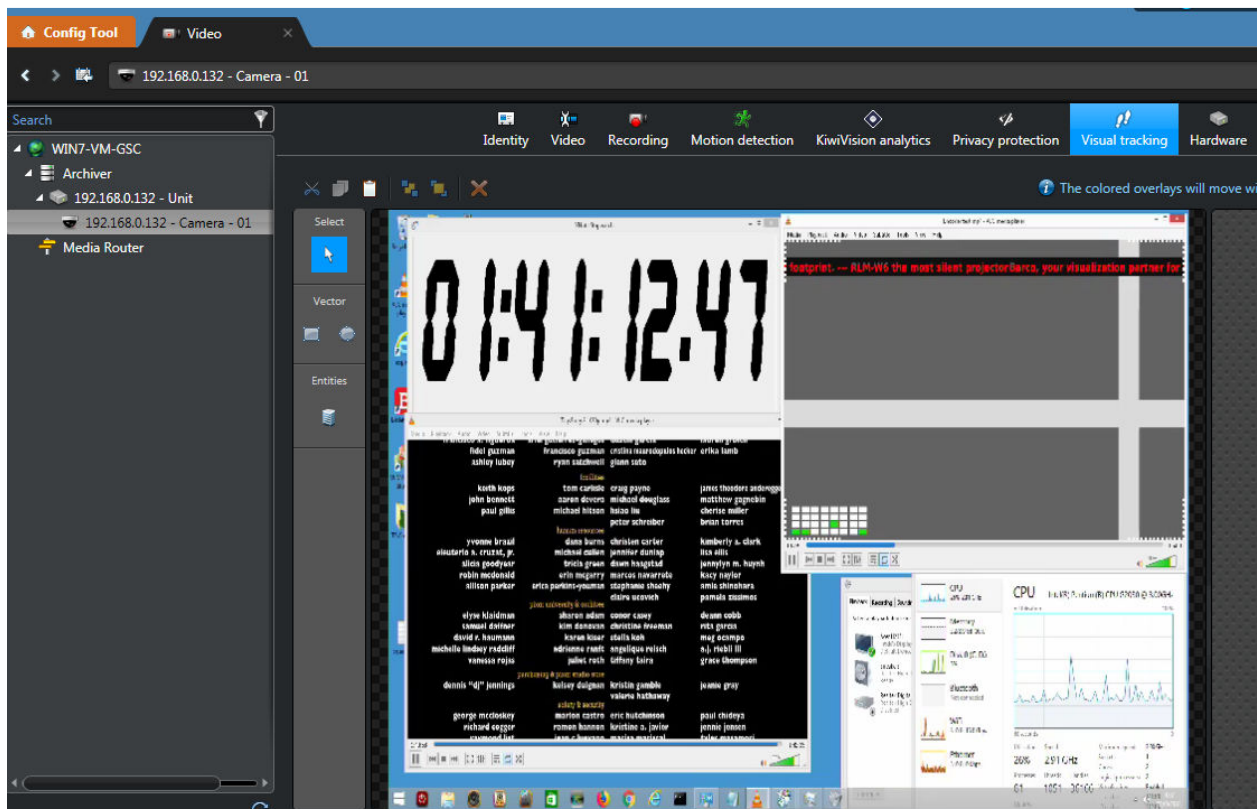


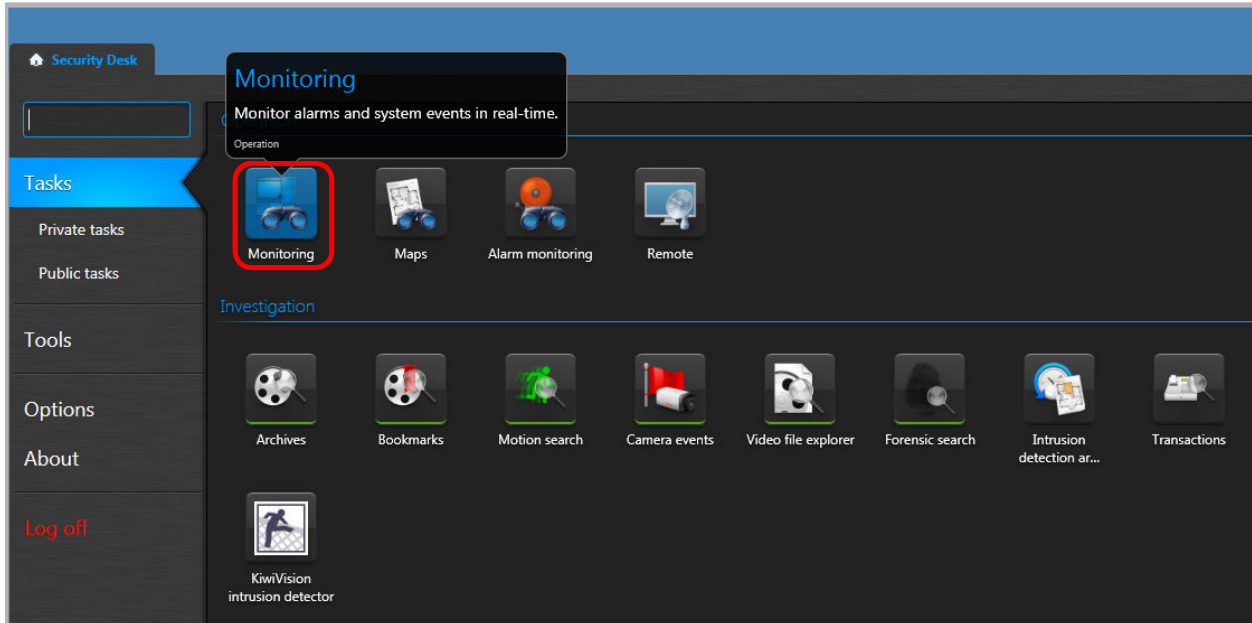
Figure 8 : GSC live video



## 2.2. To view video via GSC Security Desk

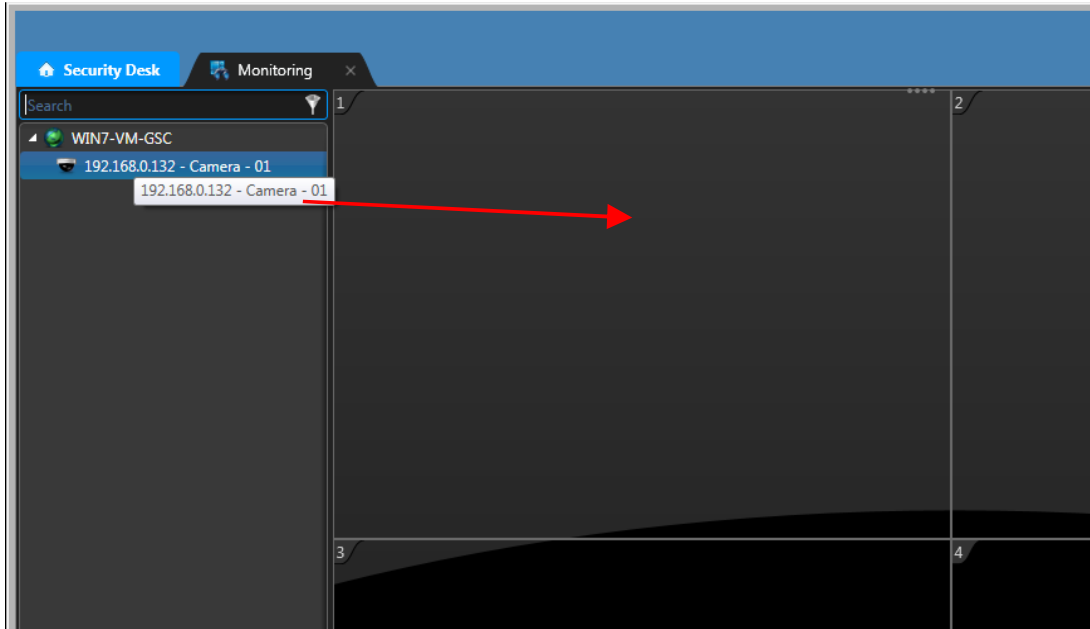
Open Monitoring tab

Figure 9 : Tasks -> Monitoring



Select source and drag to quadrant

Figure 10 : select source and drag into a quadrant



Live Video with play back controls

Figure 11 : video in quadrant with play back controls

