

# ANT-35000 encoder default setup after reset.

## Contents

- ANT-35000 encoder default setup after reset. .... 1
- Overview ..... 1
- Document info ..... 1
- 1. Setup – from reset ..... 2
  - 1.1. Reset ..... 2
  - 1.2. Set IP address..... 2
    - 1.2.1. Using True Manager..... 2
  - 1.3. Setup ANT-35000 ..... 5
- 2. To view the Video ..... 7
  - 2.1. Web interface..... 7
  - 2.2. Software decoder - VLC..... 7
    - 2.2.1. VLC - information about video..... 8
- 3. ONVIF profiles ..... 9
  - 3.1. Encoder setup ..... 9
  - 3.2. View ONVIF profiles of a device ..... 9
  - 3.3. ONVIF Profile information ..... 11
  - 3.4. View video through ONVIF ..... 12

## Overview

This document is how to:

1. reset the encoder and set it up, with minimal changes to the settings
2. view video the RTSP video using VLC.
3. create ONVIF profiles and view them with the ONIVF Device Manager tool

For further help and advice please contact Antrica on:  
 Email: [support@antrica.com](mailto:support@antrica.com)  
 Phone: +44 1628 626098 ext 3

## Document info

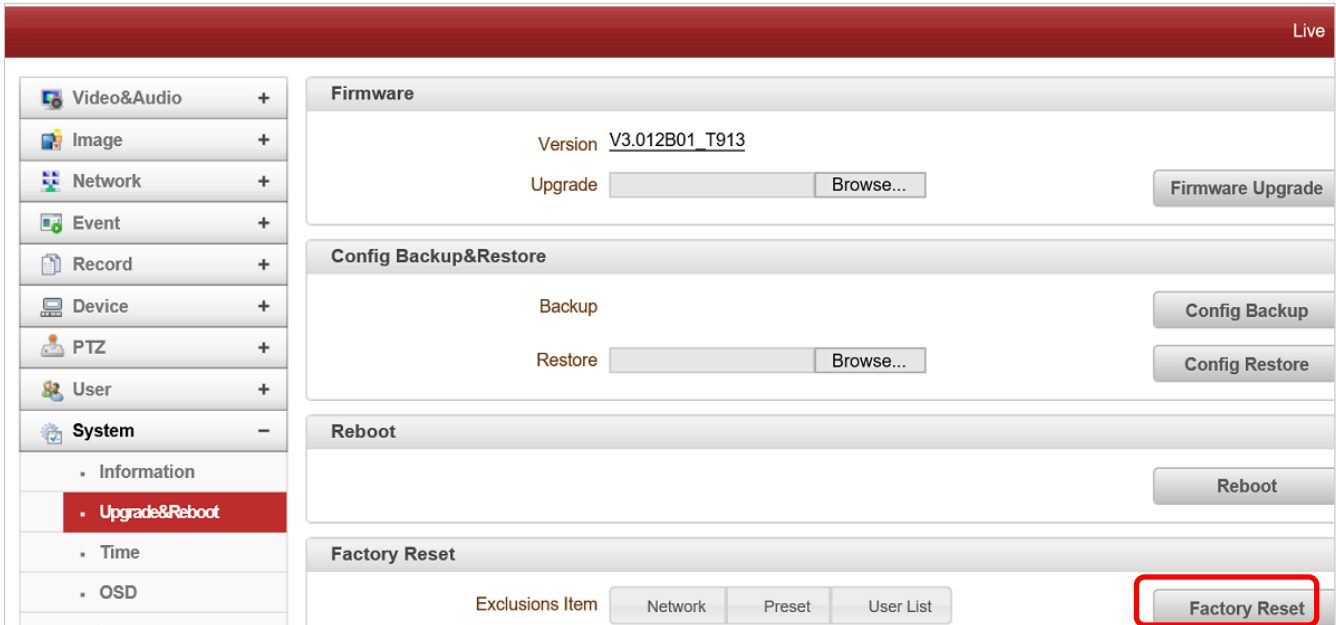
Version	date	author	Comments
0.1	17-Dec-20	David M	Initial release – True Manager v2.0.1.11
0.2	18-Dec-20	David M	Added ONVIF profiles and ODM 2.2.250 usage
0.3	10-Sep-21	David M	Correct Dropbox links

# 1. Setup – from reset

## 1.1. Reset

Navigated to the Upgrade&Reboot web page and click the "Factory Reset" button, as indicated in Figure 1, below. Accept the pop-up message to allow the encoder to be reset.

Figure 1 : System -> Upgrade&Reboot page



## 1.2. Set IP address

The IP address needs changing to match your network. You can either access the default IP address of 192.168.10.100 or use True Manager to change the IP address to match you network settings.

### 1.2.1. Using True Manager

Download True Manager – a Windows based Application to discover and alter IP addresses of the ANT-35000 encoder and ANT-36000 decoders, on the network, even across subnets.

Direct link <https://www.dropbox.com/sh/z0s02soy9sel5n/AACbohnEDugCg8poSBU3cZhTa?dl=0>

Via website : <https://antrica.com/> -> Downloads -> Software -> Under "Encoders" either

- [ANT-35000H HDMI Input ONVIF 1080P60 H.264 HD Video Encoder](#)
- [ANT-35000A HDMI, HD-SDI & CVBS Input ONVIF 1080P60 H.264 HD Video Encoder](#)

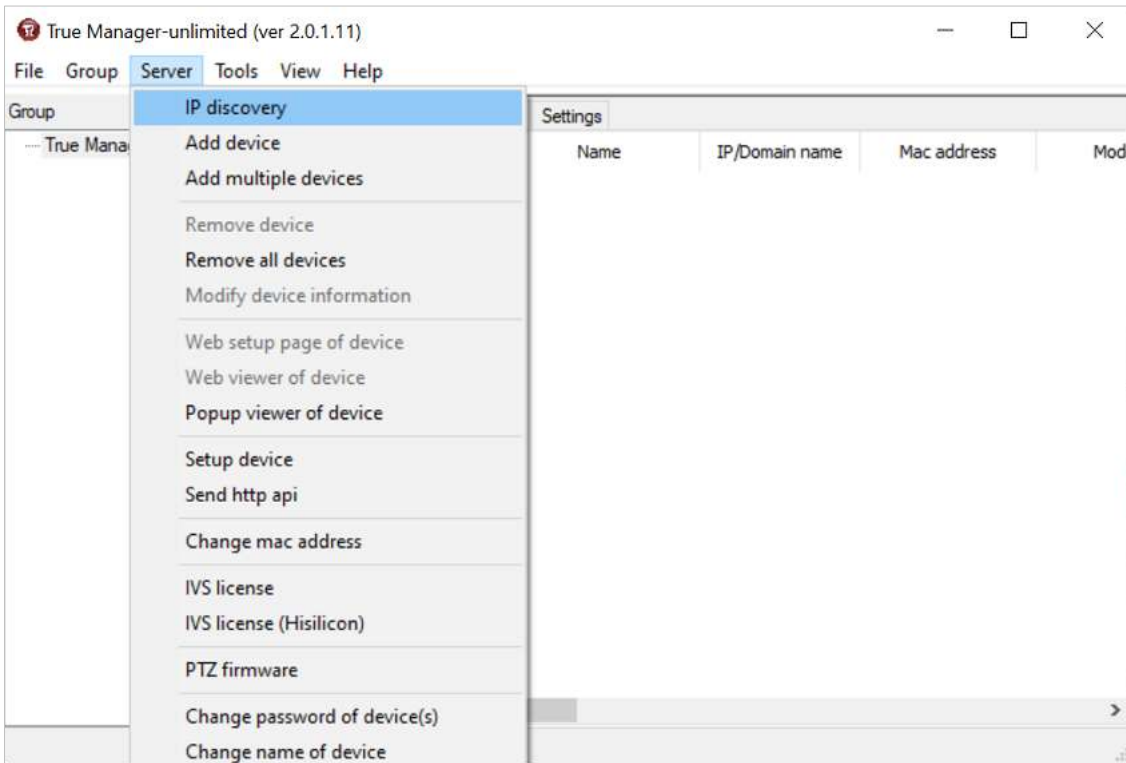
Dropbox window opens -> TrueManager\_v2.0.1.11 -> download "TrueManager\_v2.0.1.11.exe"

Run the executable file, and accept any security messages to allow the program to run.

Select language – English

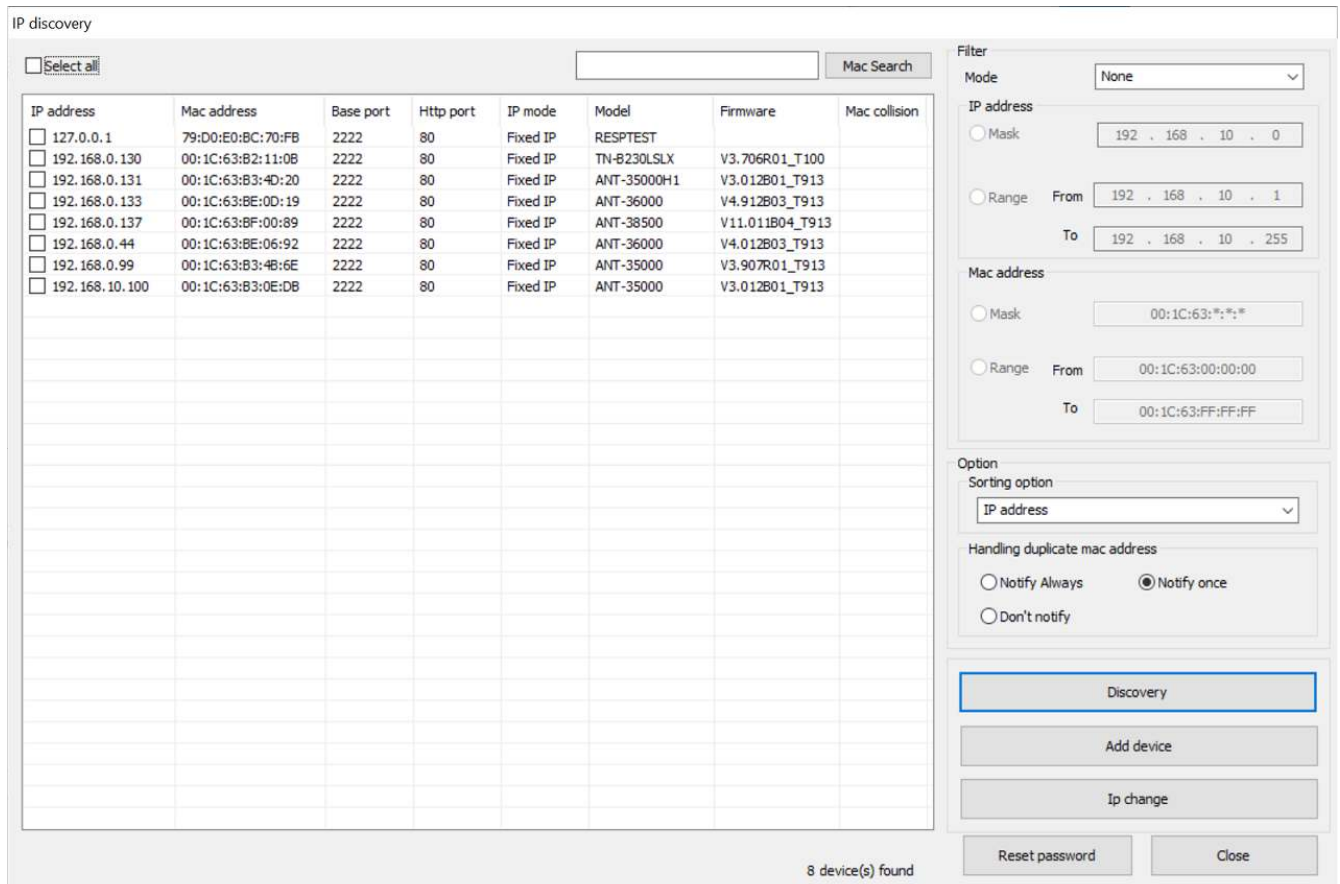
Then the program opens. From the top menu selected "server" -> "IP discovery" as shown in Figure 2, below.

Figure 2 : True Manager



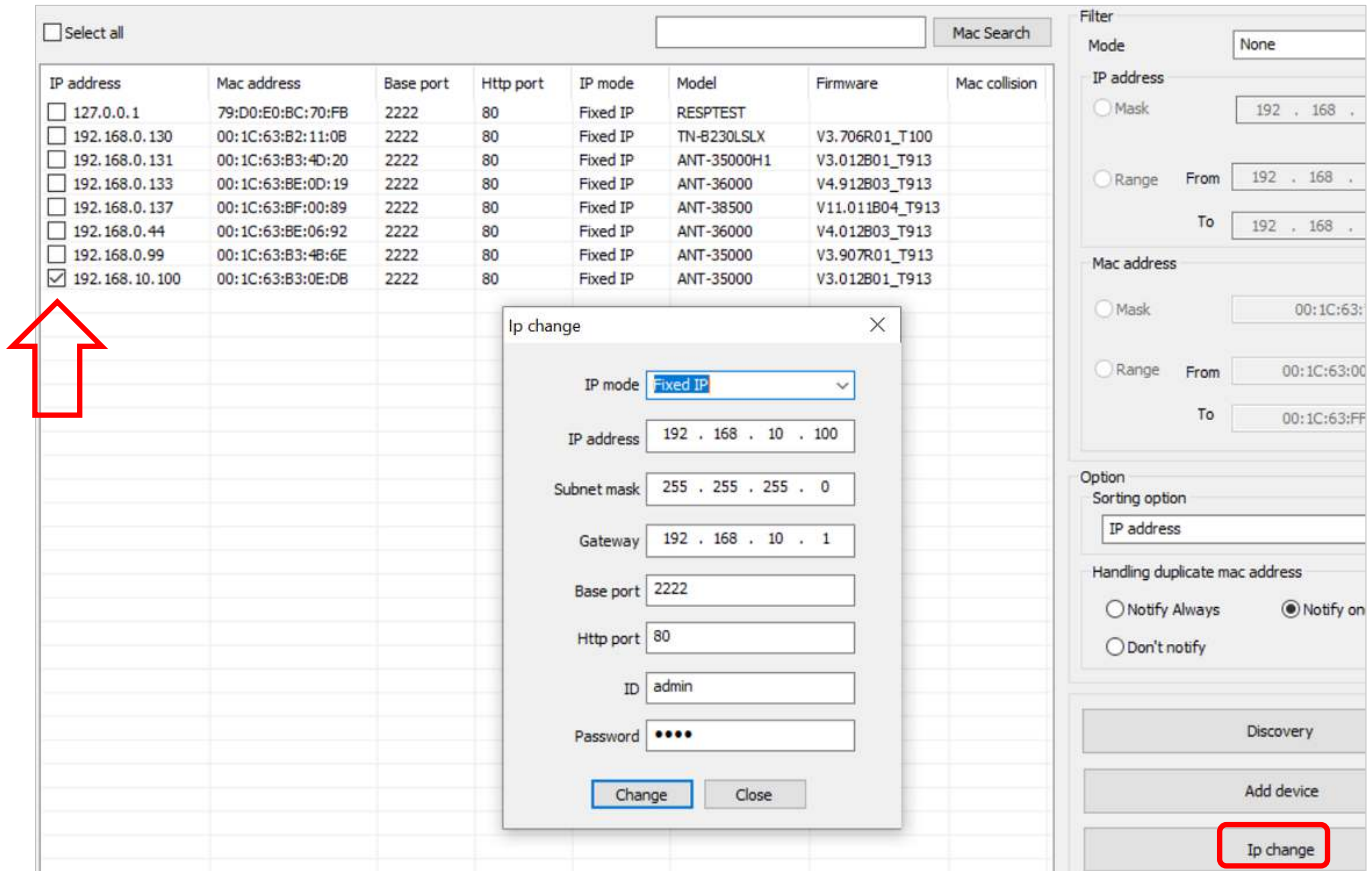
A new window opens, as shown in Figure 3, below, and the network is scanned for certain Antrica products. These products are then listed.

Figure 3 : True Manager – after IP discovery



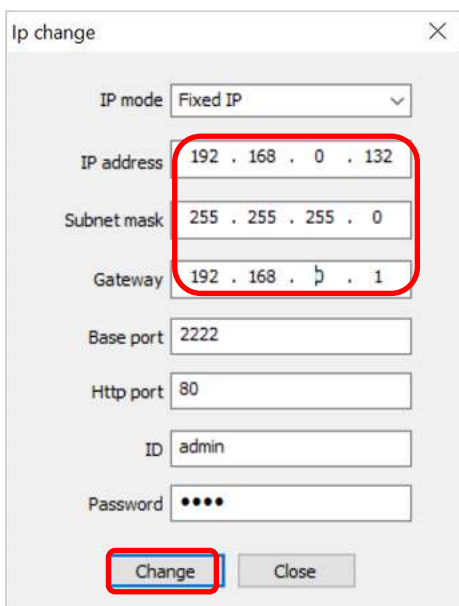
Select your encoder and then click "Ip change" and a small popup windows opens, as shown in Figure 4, below.

Figure 4 : True Manager - Change IP address



Change the IP detail to your requirement then click "Change". Ideally only change the IP address and Gateway. The encoders IP address has now been set as required. You can now close the "IP discovery" window and exit "True Manager".

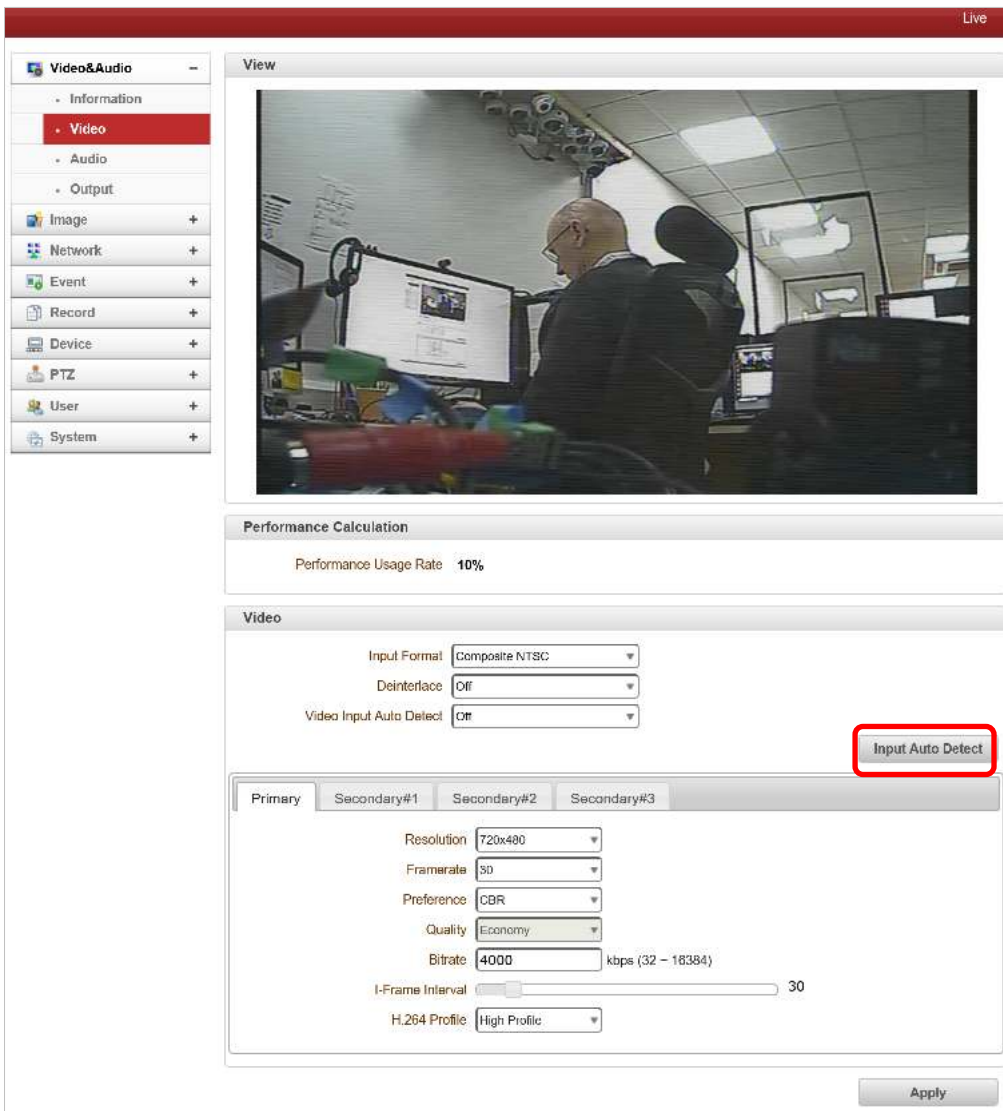
Figure 5 : True Manager - set new IP address



### 1.3. Setup ANT-35000

From the ANT-35000's web page, navigate to the setup -> Video&Audio -> Video, as shown in Figure 6, below.

Figure 6 : ANT-35000 Video setup web page



Click the "Input Auto Detect", as indicated in Figure 6, above. New pop-up window will appear, as show Figure 7 and Figure 8, below. Figure 7 is for a ANT-35000H / H1 and Figure 8 is or a ANT-35000A / A1 with all its input's connected. In Figure 9, below, some of the input are not connected and the "unplugged" message is seen. Selected the required input, and this window will close.

**If "Unplugged" is shown then the input has not been detected.**

Investigation will need to be done by **you** to find the issue. It is likely to be an issue with the source, but in rare circumstances it has been an issue with the HDMI input chip. In these cases, the customer has damaged the HDMI input chip.

Figure 7 : ANT-35000H - input auto detect



Figure 8 : ANT-35000A - input auto detect

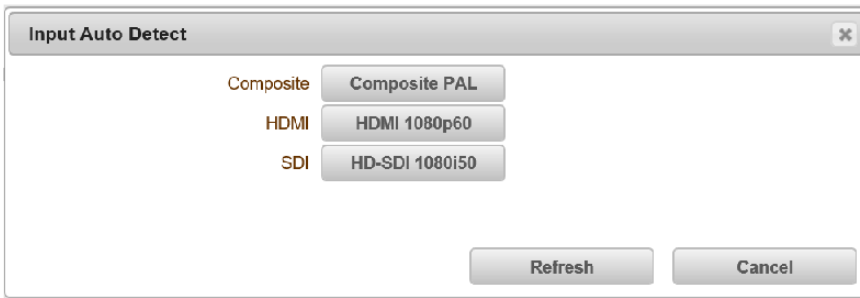
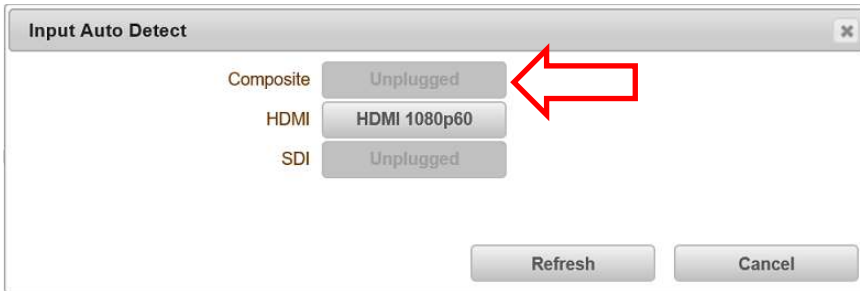
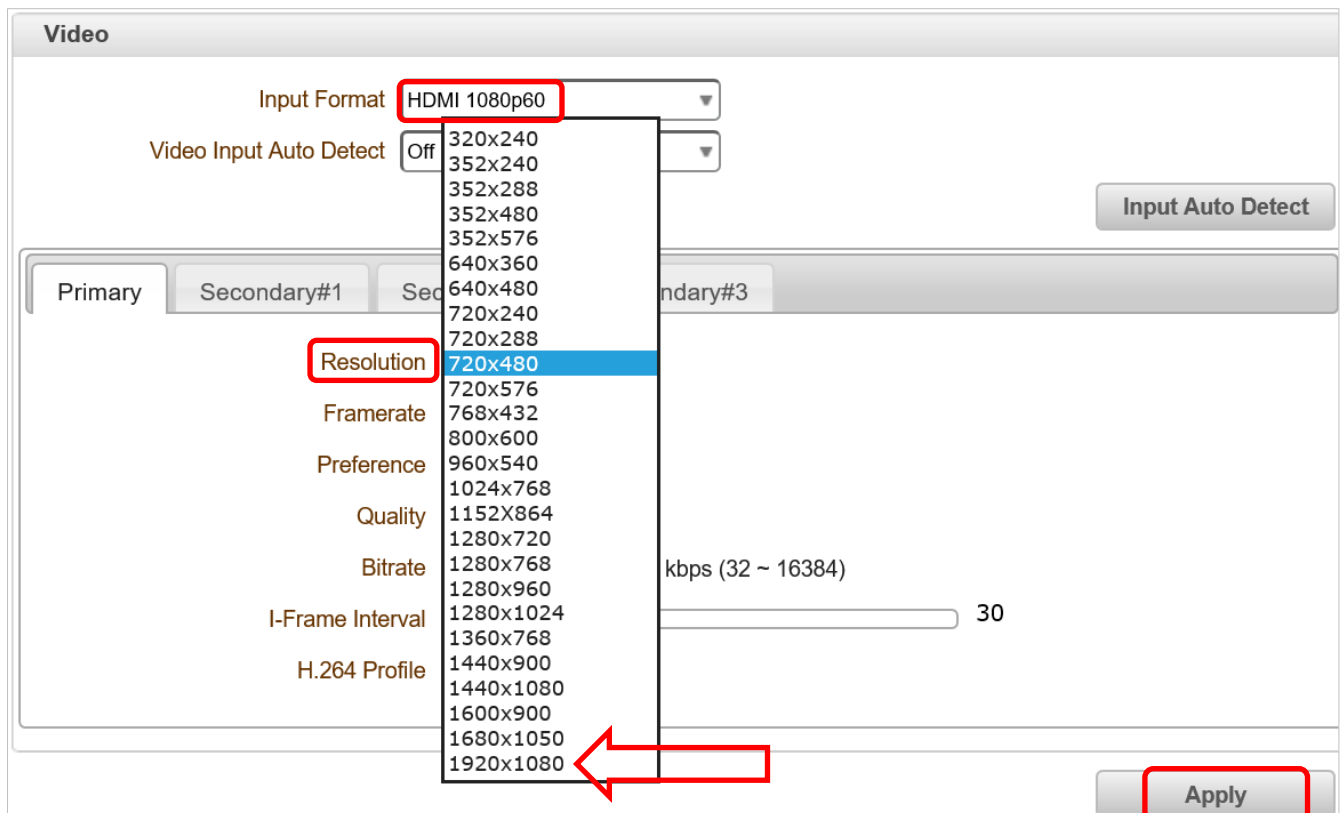


Figure 9 : ANT-35000H - input auto detect – with missing inputs



From this example the HDMI was selected, as shown in Figure 10, below. From the “Resolution” setting a list of available resolutions is shown. In this example the maximum 1920x1080 will be selected, and then Apply clicked. **No other** setting should be changed, as the encoder is being setup with most parameters at their default values.

Figure 10 : ANT-35000 - available video resolution

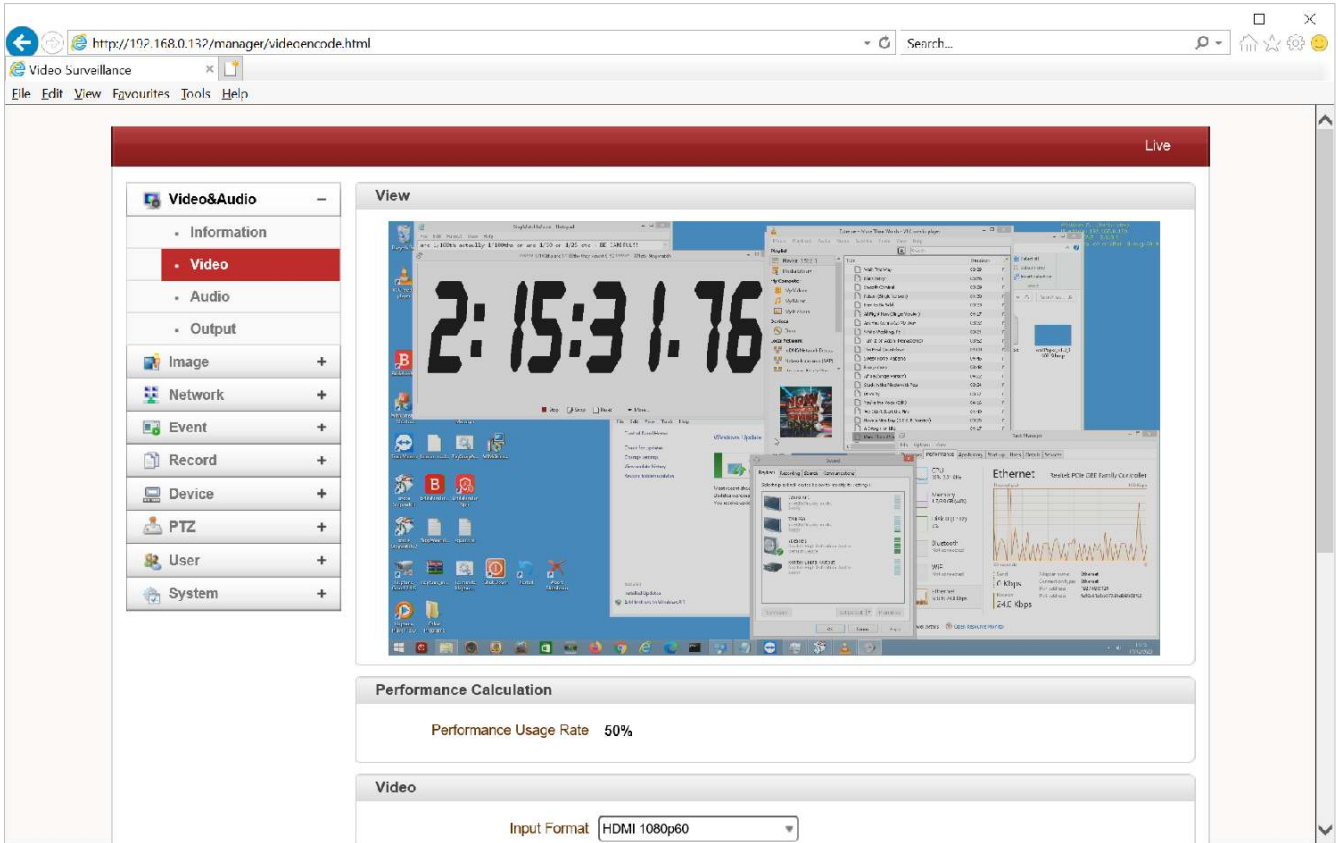


## 2. To view the Video

### 2.1. Web interface

If you are using Internet explorer to view the web interface and have accepted the ActiveX plug, the video should be seen, as shown in Figure 11, below.

Figure 11 : ANT-35000 – HDMI video seen in web page



### 2.2. Software decoder - VLC

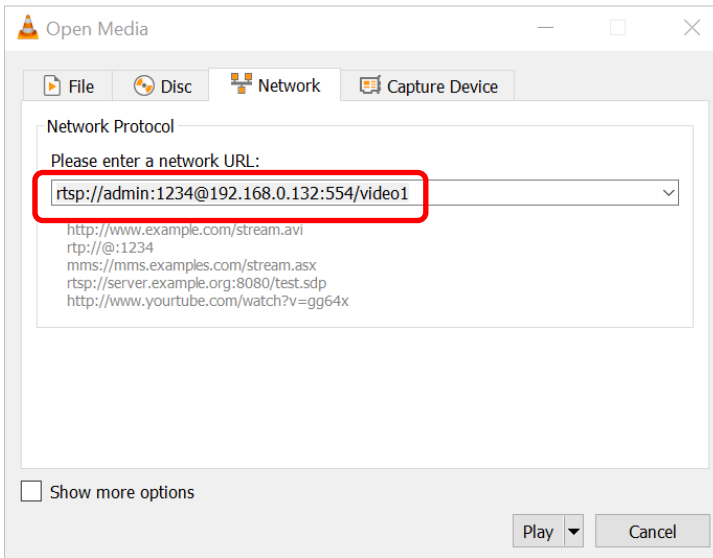
To view the RTSP video, a software decoder like VLC can be used. Ensure the PC is on the same network as the ANT-35000 and can access the ANT-35000's web interface.

Open VLC -> Media -> "Open Network Stream" -> in the "Please enter a network URL:" box add

`rtsp://admin:1234@192.168.0.132:554/video1`

as show in Figure 12, below. The same URL can be added to most decoders to enable the stream to be viewed.

Figure 12 : VLC - RTSP URL



### 2.2.1. VLC - information about video

When the video is playing, to see information about the stream, from VLC top menu -> Tools -> "Codec Information" and popup windows will appear, as show in Figure 13, below.

The window contains the encoding algorithm (in the case h.264), resolution, frame rate and access URL. From the "Statistics" tab, the bitrate of the current video can be seen, as indicated in Figure 14, below

Figure 13 : VLC - Current Media Information - Codec Information

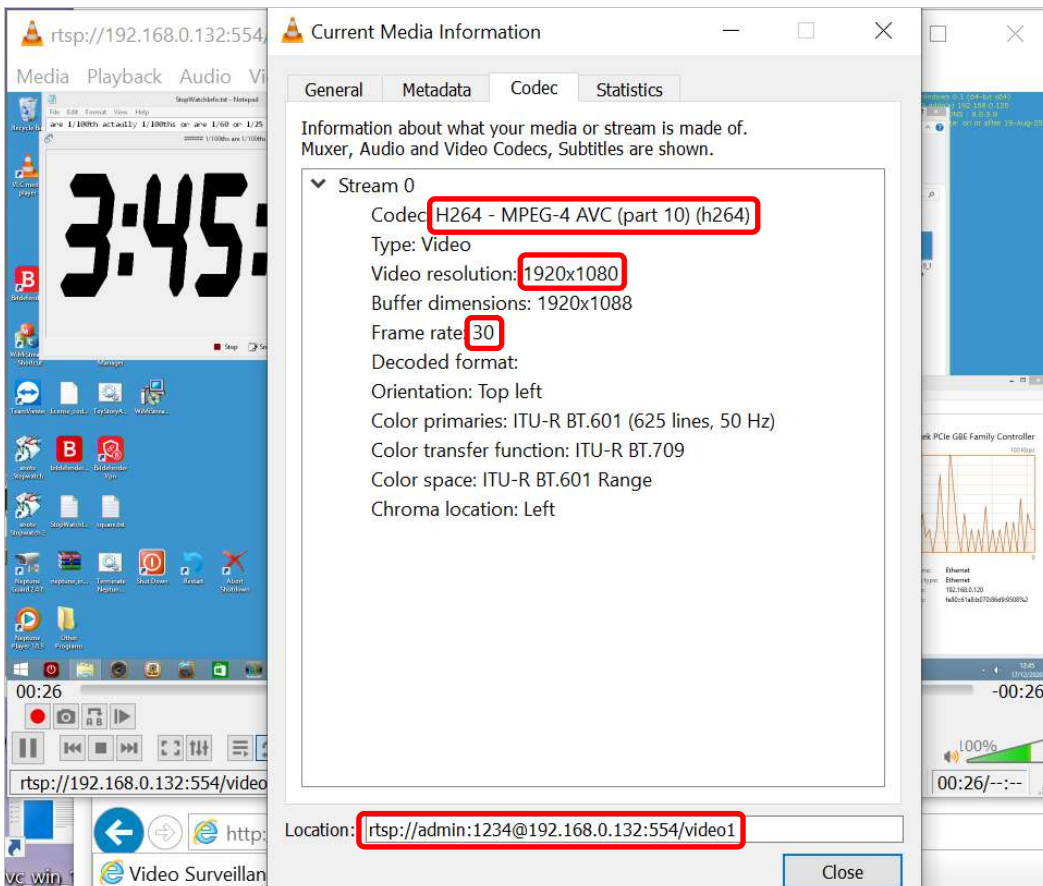
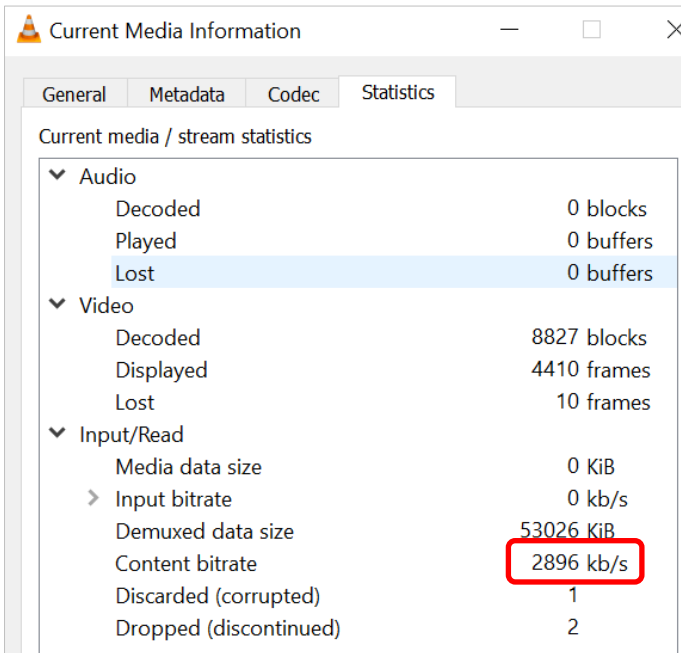




Figure 14 : VLC – Current Media Information - Statistics



### 3. ONVIF profiles

ONVIF is always enabled within the ANT-35000 series encoders. To confirm all the ONVIF profiles are valid, each profile would have to be checked to confirm the details are mentioned in "3.3 ONVIF Profile information" below.

#### 3.1. Encoder setup

The encoder can be setup with up to 4 streams. In this example the stream details are shown in Table 1, below, however, your encoder configuration can be used. Each one of these streams will appear as an ONVIF profile. If only 3 streams are enabled then only 3 ONVIF profiles will be available. The caveat is that the ANT-35000 encoders will produce 2 profiles for each stream, one with audio and one without audio. The setup settings for these 4 streams can be found on the web pages, shown in Figure 6 and Figure 10, above.

Table 1 : ANT-35000 setup for 4 streams

Video	Resolution	Framerate	Bitrate (kbps)	RTSP URL
Primary	1920x1080	30	1500	rtsp://admin:1234@192.168.0.132/video1
Secondary#1	1280x720	30	666	rtsp://admin:1234@192.168.0.132/video1s1
Secondary#2	720x576	25	300	rtsp://admin:1234@192.168.0.132/video1s2
Secondary#3	640x480	25	222	rtsp://admin:1234@192.168.0.132/video1s3

#### 3.2. View ONVIF profiles of a device

To view the ONVIF profiles there is a free to download and use tool called "ONVIF Device Manager v2.2.250", sometime abbreviated to ODM, available from <https://sourceforge.net/projects/onvifdm/>

When the program is run, it will scan the network for device which may have ONVIF profiles, shown in Figure 15, below.

Add the username and password of the device you are going to interrogate, and then click "Log in". For the ANT-35000 the default values are admin and 1234. To find the device you can scroll down the list or start typing its IP address in the IP address search field.

Once the encoder has been found, click on the "panel" to access the device. Once access there are multiple options, as shown in Figure 16, below.

Figure 15 : ONVIF device manager interface

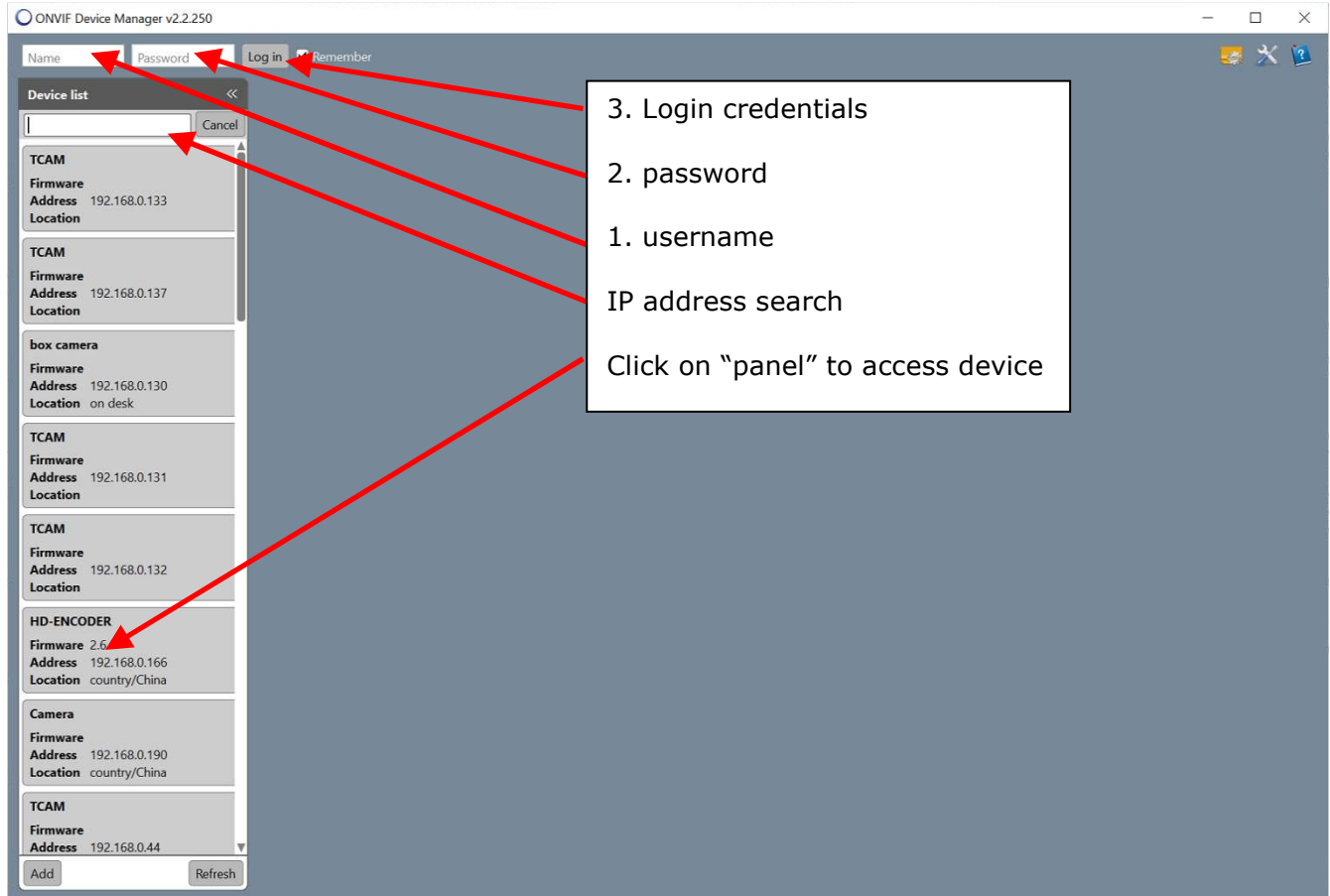
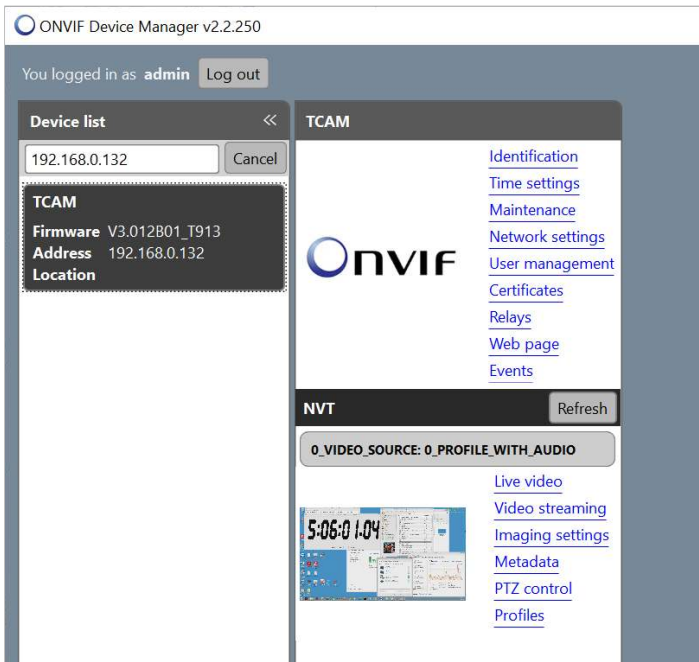
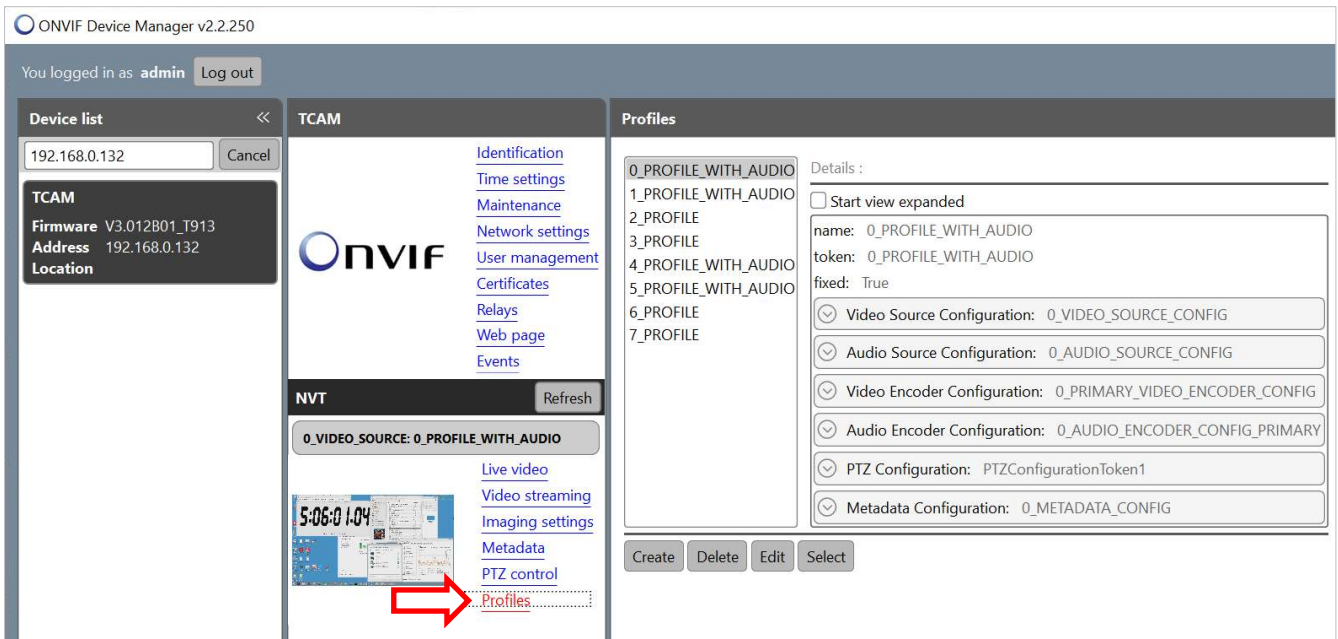


Figure 16 : ODM with encoder accessed



To view the ONVIF profiles, click on "Profiles" and all the ONVIF profiles will be listed, as shown in Figure 17, below.

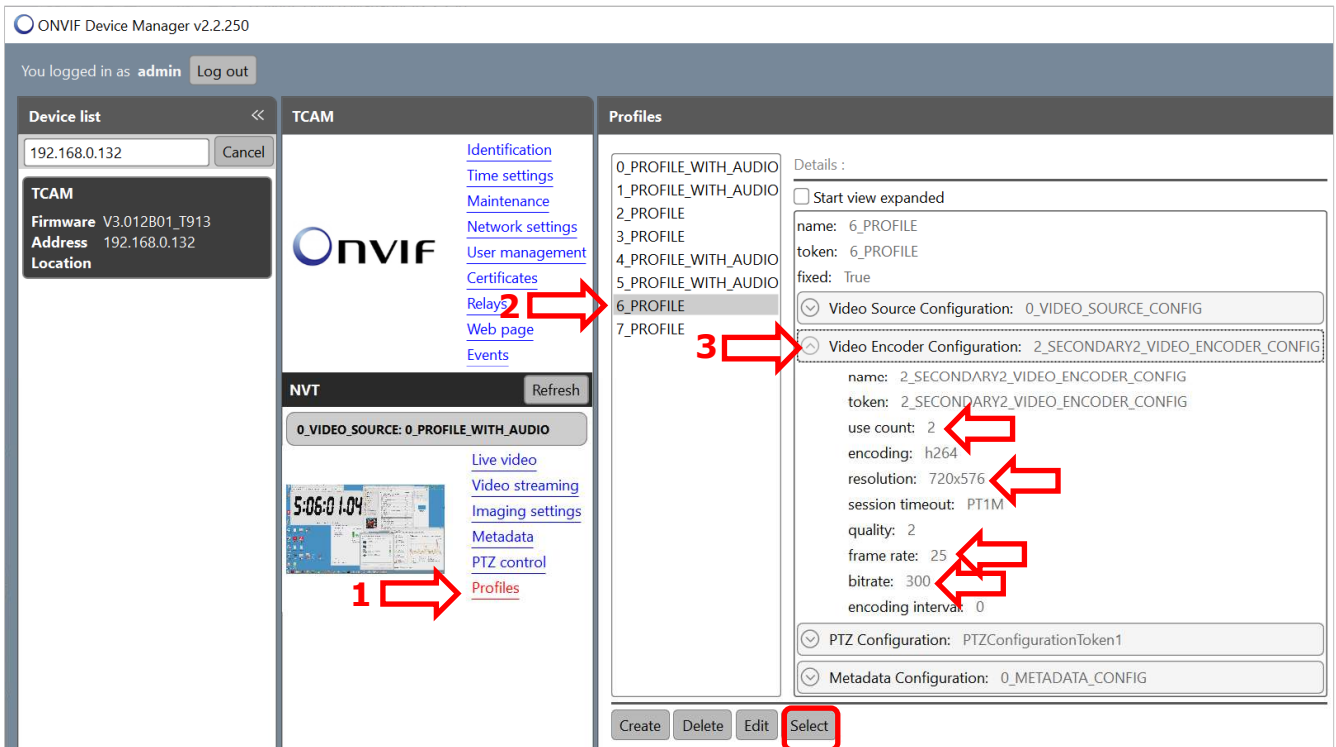
Figure 17 : ODM - ONVIF profiles



### 3.3. ONVIF Profile information

To examine a profile, select the profile name and then expand "Video Encoder Configuration", as indicated in Figure 18, below. From the example this image the code is h.264, resolution is 720x576, frame rate is 25 and bitrate is 300 kbps. These are same as those in Table 1, above.

Figure 18 : ODM - Profile video detail



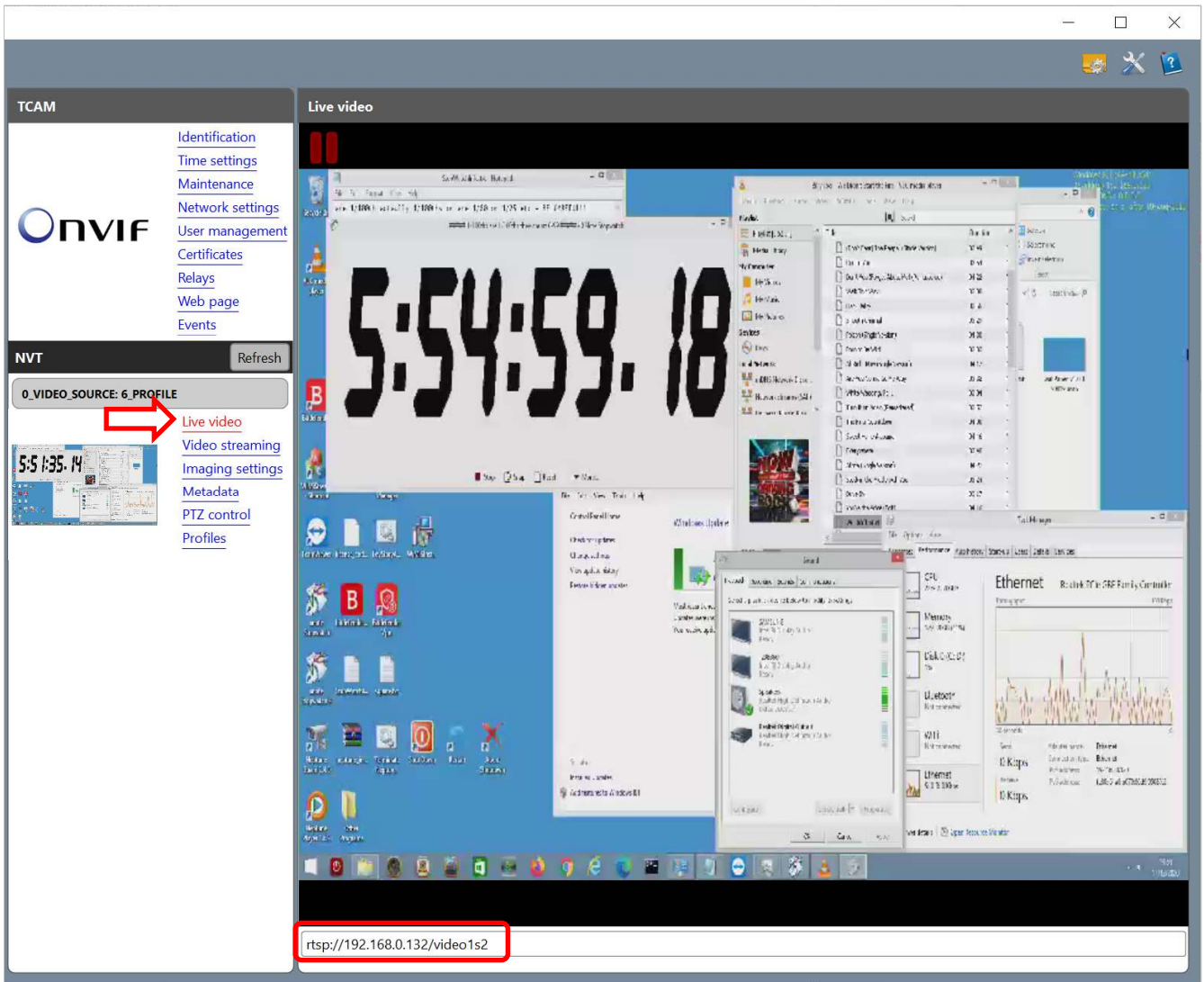
### 3.4. View video through ONVIF

To view this stream in ODM, click "Select", as indicated in Figure 18, above. The click "Live video", as indicated in Figure 19, below. The live video can be seen and the URL for that stream is displayed at the bottom of the page, as indication. In this example it is:

rtsp://192.168.0.132/video1s2.

The username, password and RTSP port of 554 are already setup and so are not displayed.

Figure 19 : ODM - Live video and RTSP URL



For all the uses of the ONVIF Device Manager tool please refer to on-line documentation, available from <https://wiki.synesis.ru/display/ODMDOC> (link is correct as of 17-Dec-20)