

Safety Precautions

- Make sure to turn off the power before installing Video Server and IP camera.
- Do not use the accessories not recommend by the manufacturer.
- Please pay heed to the follow safety precautions – operating and storing location.
 - Avoid extremely hot and cold places. (Operation temperature: -10°C to 50°C
(14°F to 122°F, 20% ~ 80% RH)
 - Do not aim to direct sunlight or close to heating equipment.
 - Do not operate the product in the presence of vibrations or strong magnetic fields.
 - Do not close to water (e.g., near .a bathtub, sink, laundry tub, etc.) or sources of powerful electromagnetic radiation.
 - Do not open the top cover of the product. It may cause a failure or electric shock to the components.
 - To prevent from overheating, make sure to verify that there is proper ventilation.
- Check for proper power source indicated on the marking label before connecting the power.

Table of Content

1. Introduction	2
2. Connecting the power	3
3. Accessing the unit	4
3-1 IP Address	4
3-2 IP initialization phase	5
3-3 Network Environment	5
3-4 Setting IP using True Manager, VMS and Web Viewer	5
3-5 Checking Connection with the set IP	7
3-6 Reset the product	Error! Bookmark not defined.
4. Trouble Shooting	Error! Bookmark not defined.
5. Checking	

1. Introduction

The IP Cameras and video servers is a video/audio transmission system that provides video and audio surveillance and control function based on a LAN, xDSL, Wireless LAN etc., and IP Network.

This manual is a document to help connect the IP Camera and video server to the network, check video condition, and make necessary changes. For more specific function settings and application, please refer to the User Manual.

- Recommended personal computer operating conditions
 - OS: Windows XP, 2000, Windows 7 or Windows 8
 - Internet Explorer(only) version 6.0 or later
 - CPU: Intel Processor (Clock speed: 2GHz or higher)
 - Memory: 2GB or higher
 - VGA: 512MB RAM or higher
(Separated VGA is recommended such as NVIDIA, ATI, etc.)
 - Hard disk capacity : 20MB or more free space

- Default ID & Password for Web Viewer
 - ID : admin
 - Password : 1234

2. Connecting the power

Connect the product's Ethernet port to your hub or router applicable to PoE. The LAN cable type differs from depending on the connection method. The product offers Power over Ethernet (PoE). However you can use the product with PoE or without PoE connection.

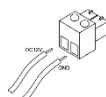
There are two power connector types.

- Clip type (2.5pi)



- Model: Video server, Box type IP camera, PTZ speed dome camera, Bullet IR

- 2pin connector type



- Model: Dome IP camera, Box camera

- Power Specifications

- DC power

Specification	Model
Output voltage DC12V (±5%) over 1.5A adapter	Box camera, Bullet Camera, Dome camera, Video server
Output voltage DC12V (±5%) over 3.0A adapter	PTZ speed dome camera

- PoE

Specification	Model
PSE devices (MidSpan/EndSpan) that support IEEE802.af	Box camera, Bullet Camera, Dome camera, Video server
PSE devices (MidSpan/EndSpan) that support IEEE802.at	PTZ speed dome camera

- AC

Specification	Model
Output voltage AC24V (±5%) over 3.0A adapter	PTZ speed dome IR camera

3. Accessing the unit

After you install the unit, IP surveillance product is accessible on the internet. If your PC is on the same internet as the product, and meet this requirement:

- Internet Explorer 6.0 or later (If you are using IE10, please use the lower version.)

You follow these steps.

- 1) Start web browser, Internet Explorer, and enter the default IP address; <http://192.168.10.100>.
- 2) In Login and Password field, enter the default **admin**, **1234**. Click Login
- 3) In order to view the video of the product in Internet Explorer, you have to set it to allow ActiveX controls, and perform one-time installation an ActiveX component.

3-1 IP Address

In order to connect the network, the administrator need to set the IP address of the camera or video server.

IP address set options are

- Getting an IP address from the DHCP server (DHCP on/off is set to “DHCP” in “**Network Configuration**”)
- Entering an IP address manually (If IP mode is “Fixed IP”, you enter manually the IP address in “**Network Configuration**”)
-

The currently set IP address status can be checked and changed through the Manager program. In this case, the user can omit the IP address initialization.

Once the IP address is initialized, it can be reset as follows [Factory default].

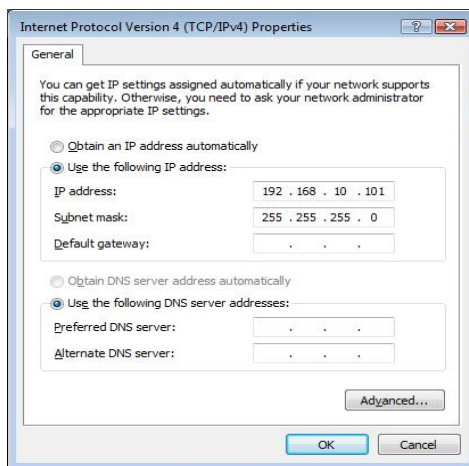
Items	Address and Port
IP Address	192.168.10.100
Subnet Mask	255.255.255.0
Gate Way	192.168.10.1
Base Port	2222
HTTP Port	80

3-2 IP initialization phase

- 1) Connect power to the product.
- 2) After system initialization is completed, wait (for about 20-30seconds) until the STATUS LED flashes green (or red).
- 3) Press the reset button until all the LEDs are red (It may take about 5 seconds).
Once the system restarts, release the restart button.

3-3 Network Environment

- 1) The product's default IP address is 192.168.10.100. Please make sure the product and PC are on the same network segment before running the installation.



Please enter the settings as below.

IP Address: 192.168.10.xxx
Subnet Mask: 255.255.255.0

Note: xxx should be a number from 1 to 254 with the exception of 100, which cannot communicate with the server.

3-4 Setting IP using True Manager, VMS and Web Viewer

The desired IP can be set in 3 ways: True Manager, VMS (Video Management Software), and Web Viewer.

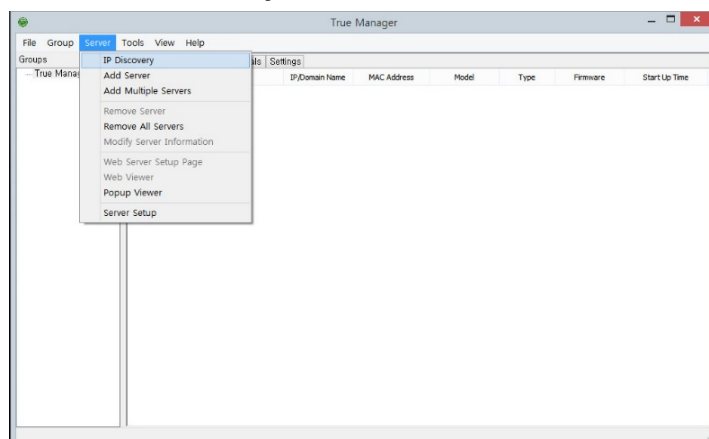
- 1) Using True Manager

True Manager is a program used for basic configuration, diagnostics and F/W upgrade of video server or IP camera.

- o Run True Manager and Choose **IP Discovery**

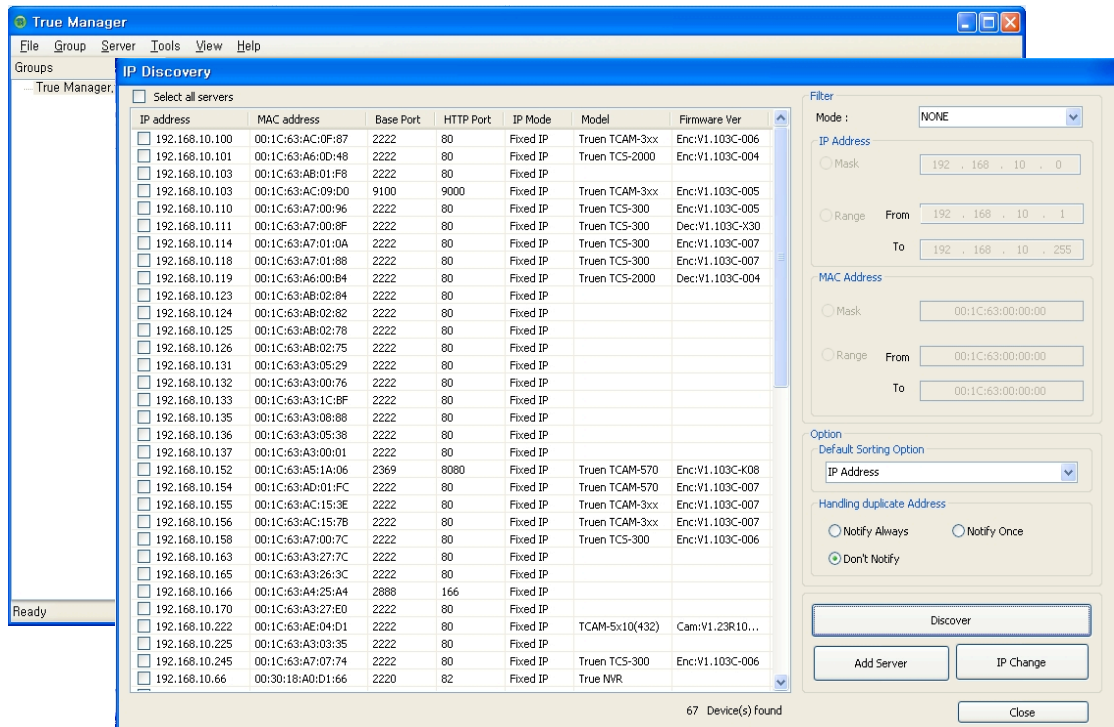


True Manager Icon

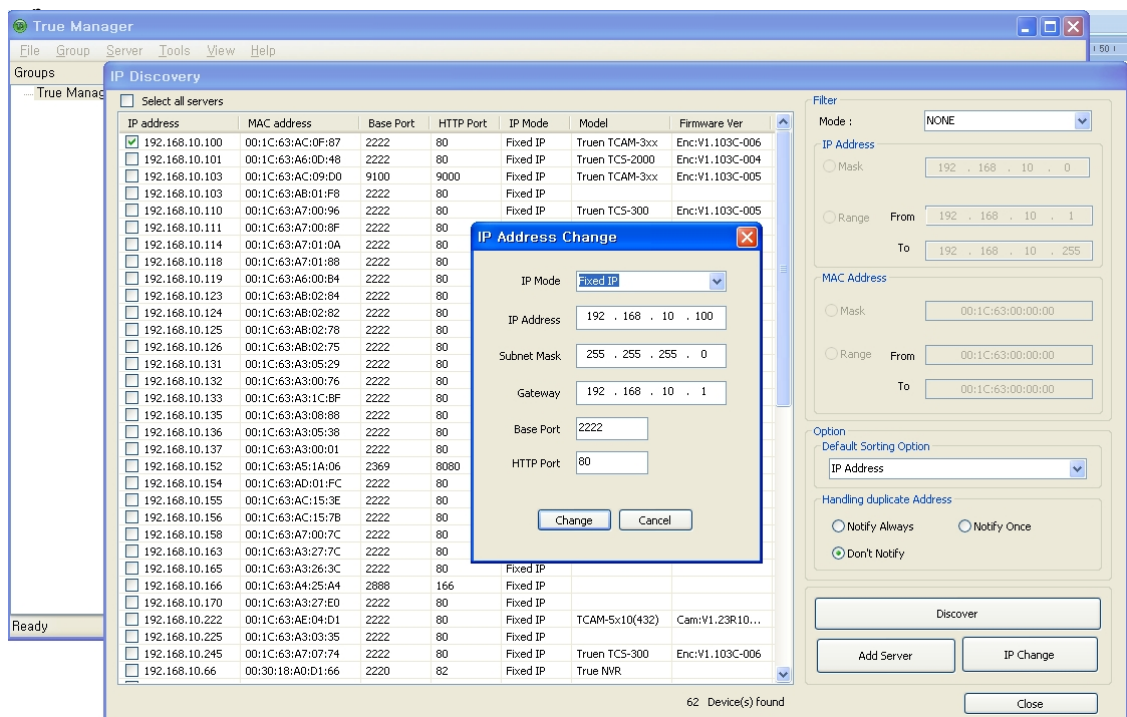


True manager

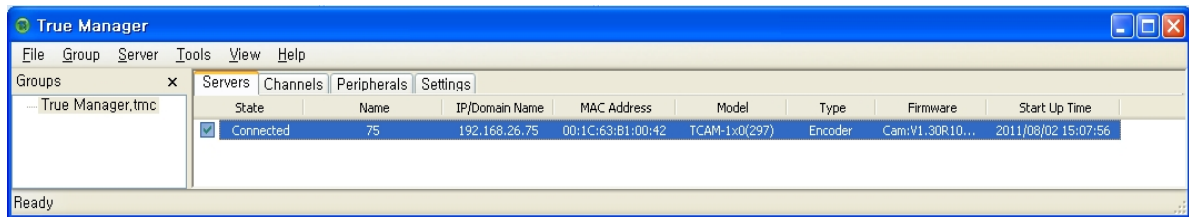
- o If you click IP Discovery, the IP addresses of the Video Server or IP Camera that are connected to the LAN (Local Area Network) will be appeared.



- o Choose the product with the IP address that you want to change and click IP Change. The following window will appear. Once the Change button is clicked, the system will

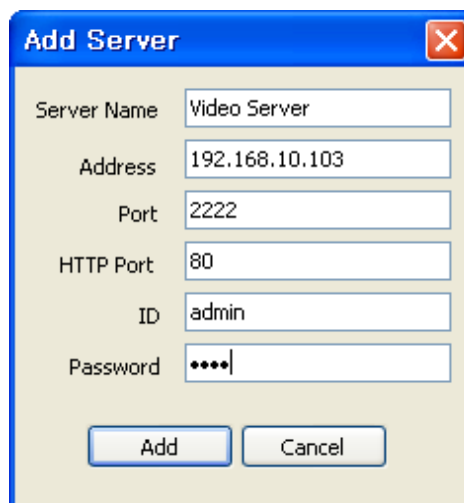


3-5 Checking Connection with the set IP



1) Using True Manager

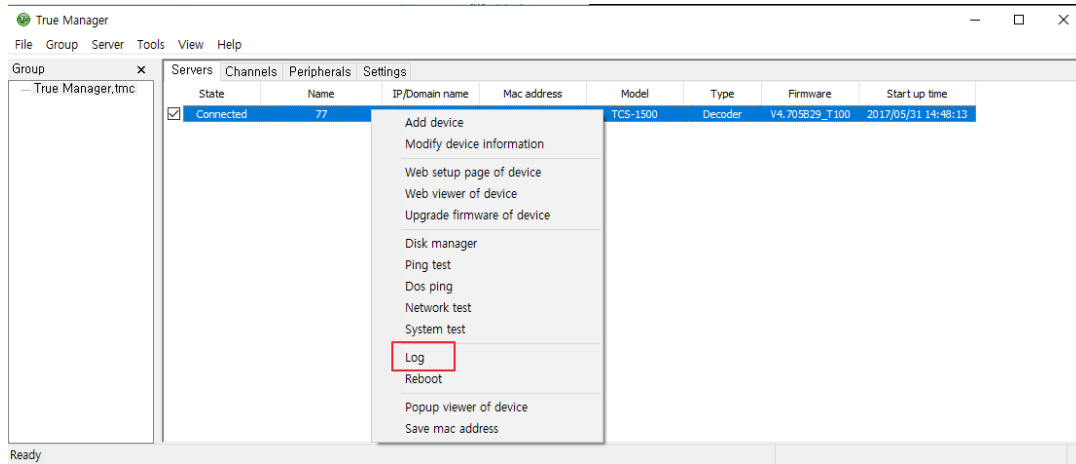
- o Register the corresponding server using the IP Discovery or Add menu directly. **The default ID and password are “admin” & “1234”**



- o Selected server can be connected to True Manager by checking connection box.
- o The factory default ID is “admin” and the password is “1234”.

5. Log

Please try to make a popup window through right button and you can find 'log'.



You can see a log from your unit.

