

EVMS User Guide

For further help and advice please contact Antrica on:

Email: support@antrica.com

Phone: +44 (0)1628 626098

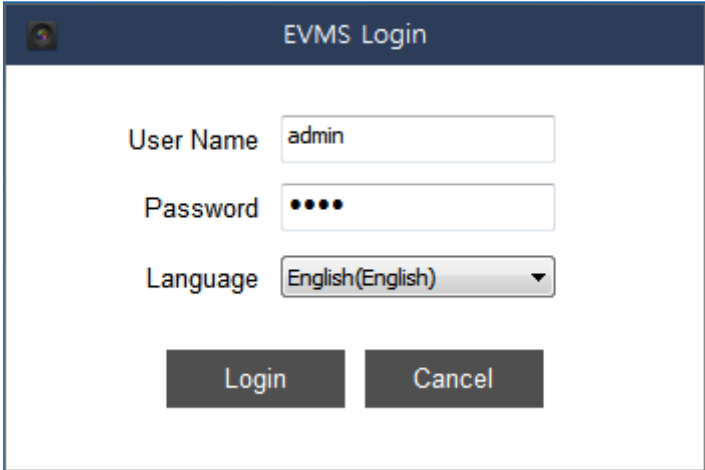
Chapter

- 1 Screen Composition 1
 - 1.1 Login Screen 1
 - 1.2 Live View Screen 1
 - 1.2.1 Live Screen Composition Table 2
 - 1.3 Map View Screen 2
 - 1.4 Temperature Status Screen 3
 - 1.4.1 Temperature Screen Composition Table 3
- 2. Data Search 4
- 3. Setting 5
 - 1.1 Add Camera 5
 - 1.1.1 Camera Registration and Management 5
 - 1.1.2 Device Search 5
 - 1.2 Temperature Event Setting 7
 - i. Temperature Event Addition 7
 - B. Storage Setting 8
 - i. Disk Setting 8
 - C. Recording/Schedule Setting 9
 - i. Recording/Schedule Setting 9
 - D. User Settings 10
 - i. Add User 10
 - ii. Authority Setting 11
 - E. General Settings 11
 - i. Map Image Upload 11

1 SCREEN COMPOSITION

1.1 LOGIN SCREEN

When running EVMS, asked user name and password. After enter the first user name is 'admin', password is '1111', click the login button.



1.2 LIVE VIEW SCREEN



1.2.1 Live Screen Composition Table

Number	Name	Description
1	Mark Date/Time	Mark present computer time, date.
2	Device Lists	Mark registrated camera lists.
3	Event Lists	Mark thermal imaging event lists.
4	Divided Screen	Show maxium 25 divided screens.
5	Real time Screen	Show webcam camera video.

1.3 MAP VIEW SCREEN



Map View Screen Composition Table

Number	Name	Description
1	Mark Maps	Mark uploaded map images.
2	Mark Camera	Display the video by placing the registered camera on the map.

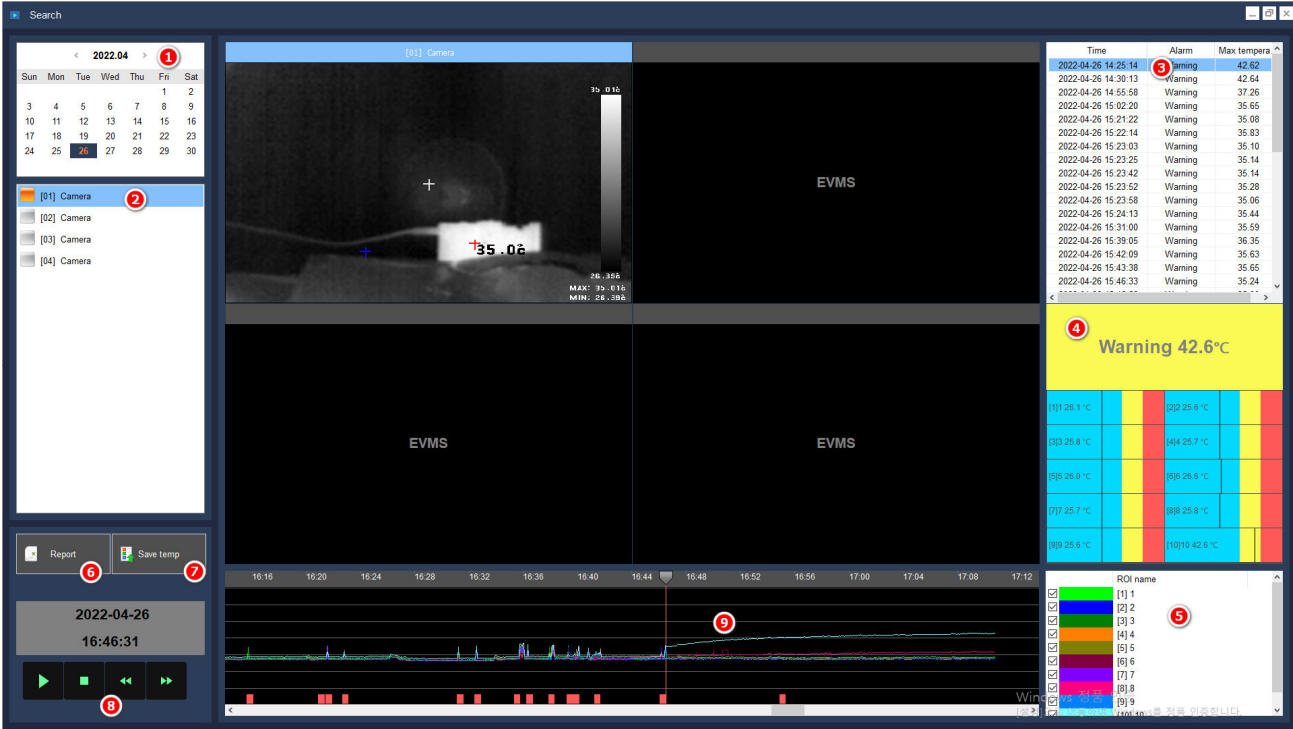
1.4 TEMPERATURE STATUS SCREEN



1.4.1 Temperature Screen Composition Table

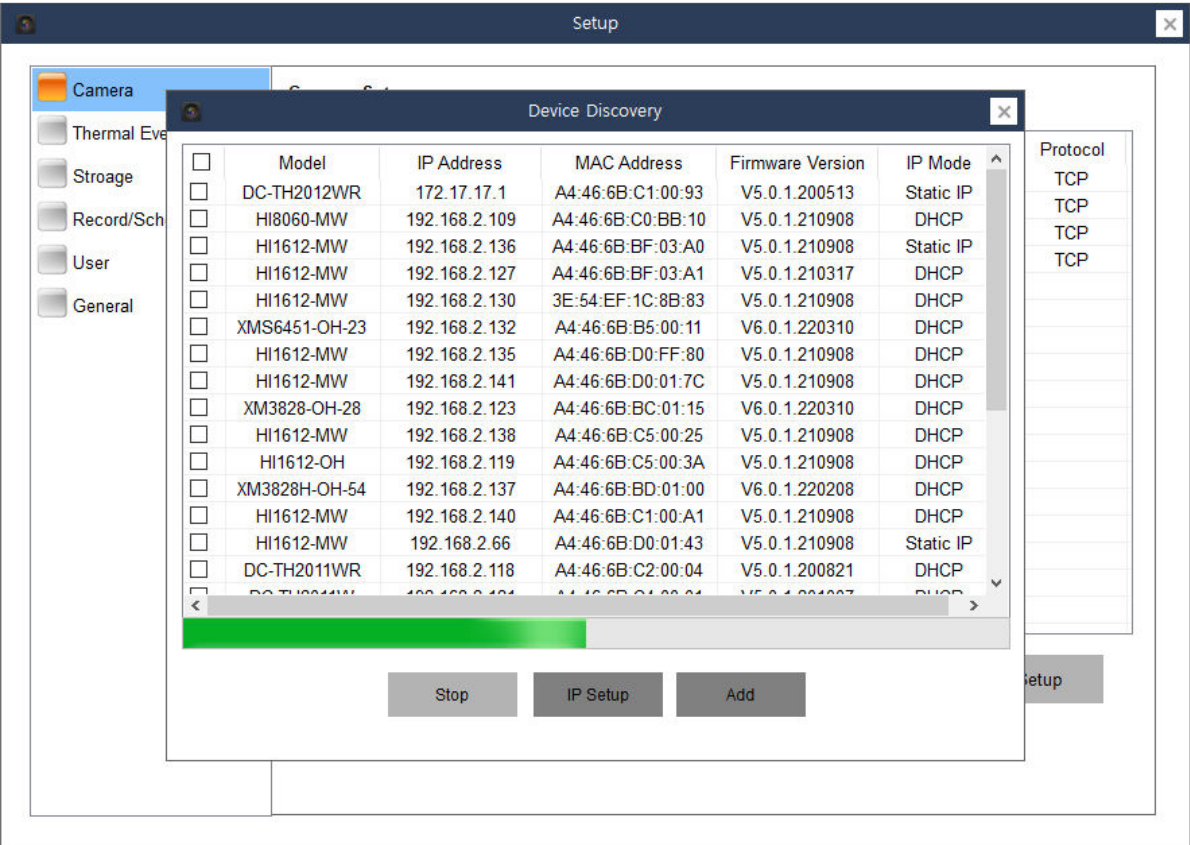
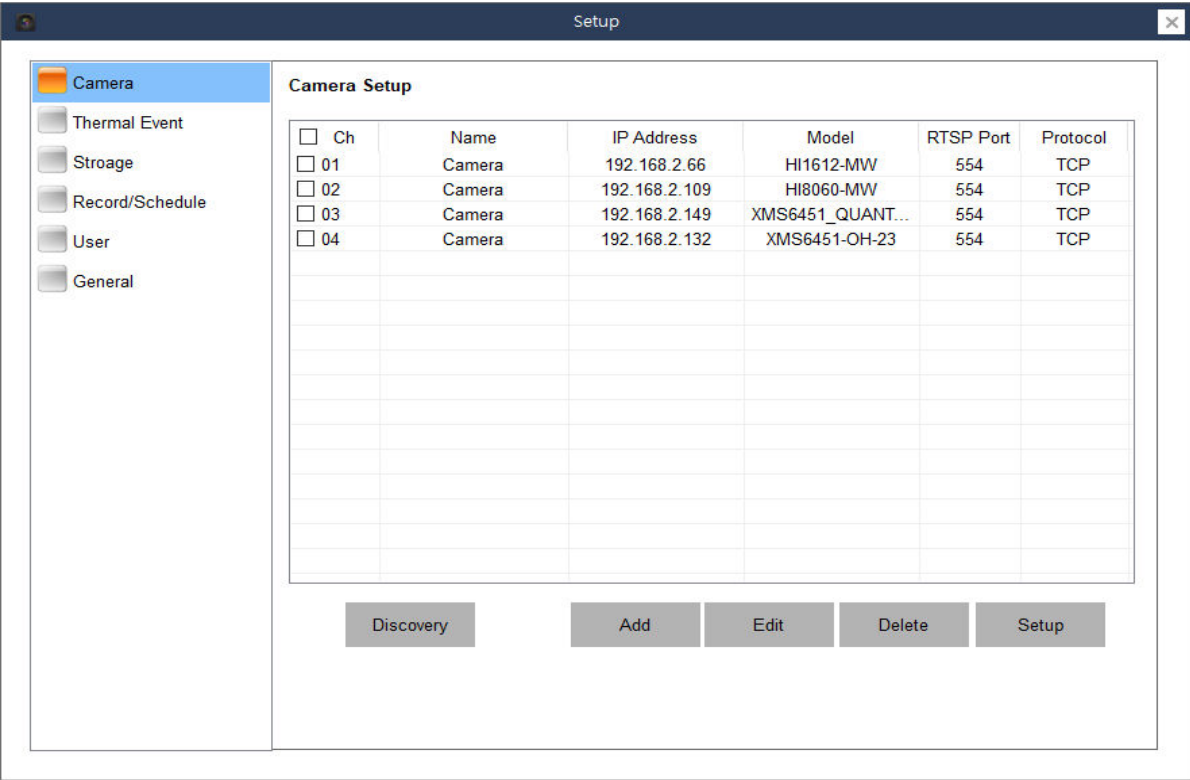
Number	Name	Description
1	Divided Screen	Show maximum 25 divided screens.
2	Mark maximum temperature status of event region.	Mark normal/caution/danger status that the highest measured temperature among event regions.
3	Event region temperature status present condition.	Mark normal/caution/danger by event regions.
4	Real time temperature graph.	Show maximum/minimum/average of the entire screens.

2. DATA SEARCH



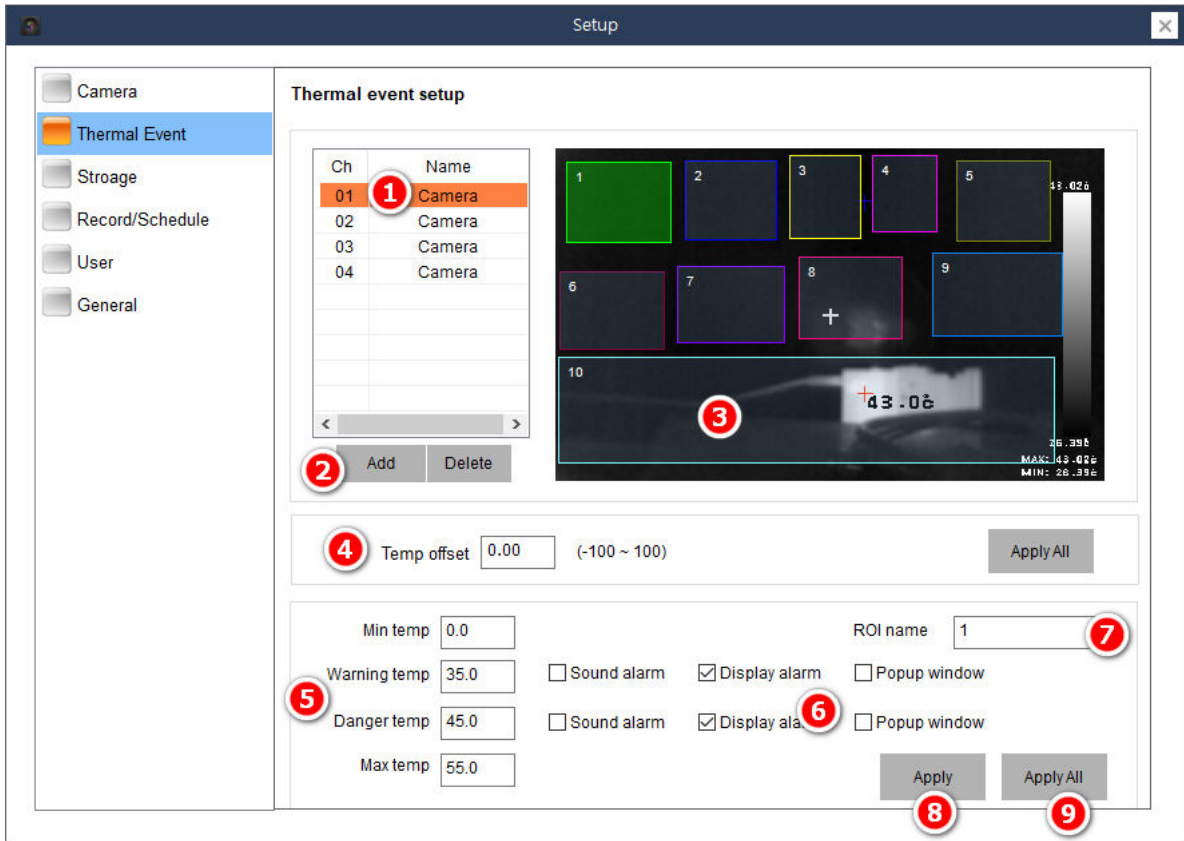
2.1.1 Data Search Composition Table

Number	Name	Description
1	Calendar	Select the date to search for recording event video.
2	Event Camera List	Mark event recording camera lists.
3	Event List	Displays event video date/time/alarm/temperature
4	temperature status	Displays the temperature status of the event list
5	ROI Information	Displays ROI information by color coding.
6	Report	Outputs the selected event information in the form of a report
7	temperature storage	Outputs the temperature information of the event/regular recording time zone.
8	video control	Pause / Stop / Before / 5 Seconds Before / 5 Seconds after
9	Temperature Graph	Graph the temperature change by ROI



- IP Setting: Set the selecting camera's IP.
- Add: Once completed IP setting, add it.

1.2 TEMPERATURE EVENT SETTING

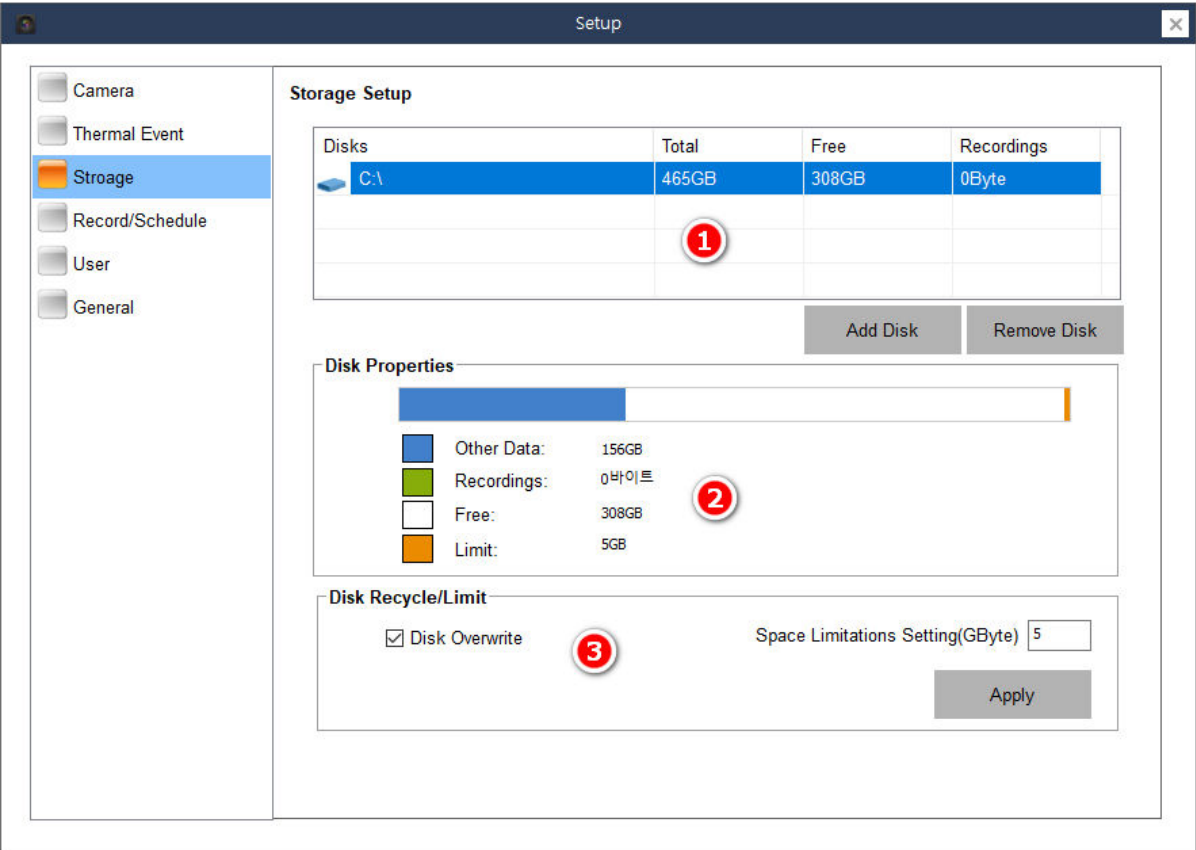


i. Temperature Event Addition

Add the region to set the temperature event and manage it.

Number	Name	Description
1	Camera List	Choose the camera to set temperature events.
2	Add/Delete Button	Add/delete temperature event region on the screens.
3	Event Temperature Region.	Can set the maximum 10 regions on the screens.
4	Temperature Correction.	Adjust camera temperature value.
5	Event Standard Temperature Setting	Set the minimum/caution/danger/maximum temperature.
6	Event Output Setting	Select event output(Sound/Screen alarm).
7	Event Temperature Region Name	Modify the name of regions.
8	Apply	Applies only to the selected camera.
9	Apply All	Applies to all registered cameras.

B. STORAGE SETTING

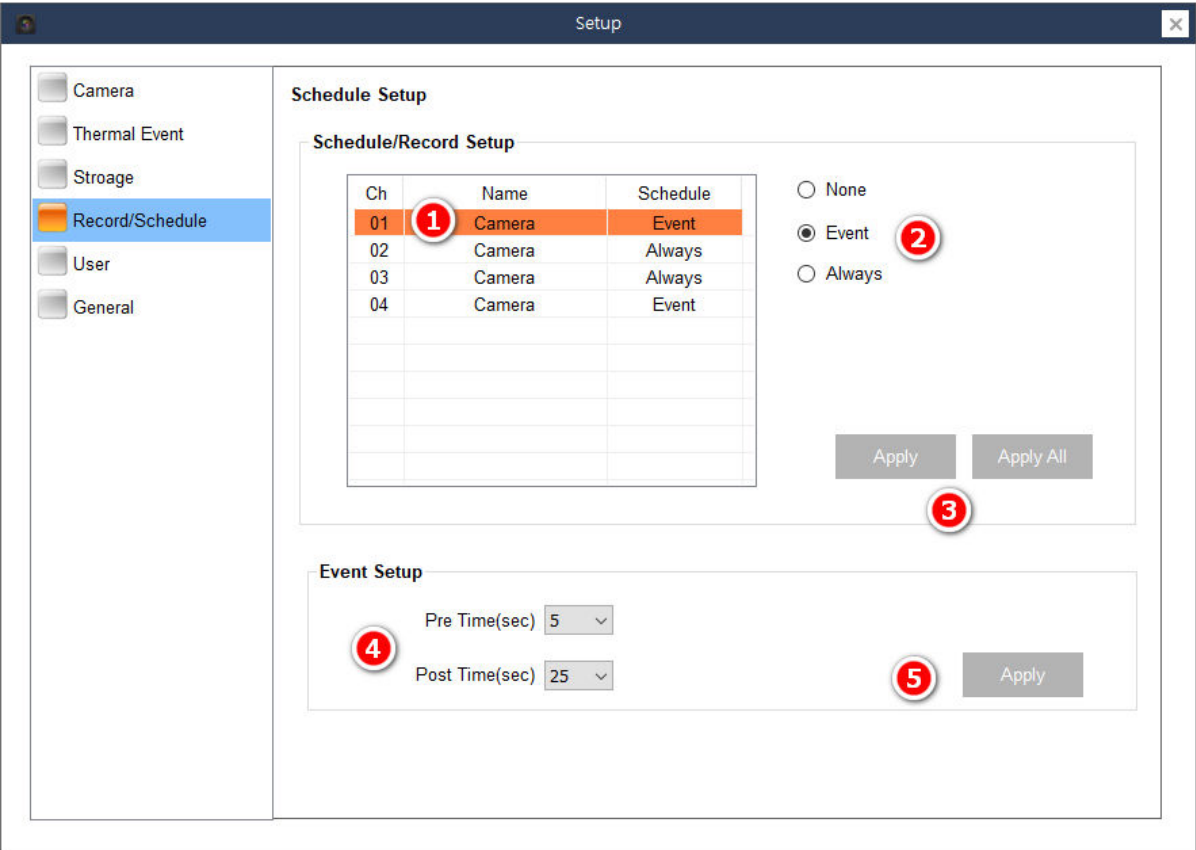


i. Disk Setting

Manage disk to record camera video.

Number	Name	Description
1	Disk Add/Delete	Add/delete disk to use for recording.
2	Disk Information	Show selected disk information.
3	Disk Reuse/Limit	Set disk reuse/limit setting capacity.

C. RECORDING/SCHEDULE SETTING

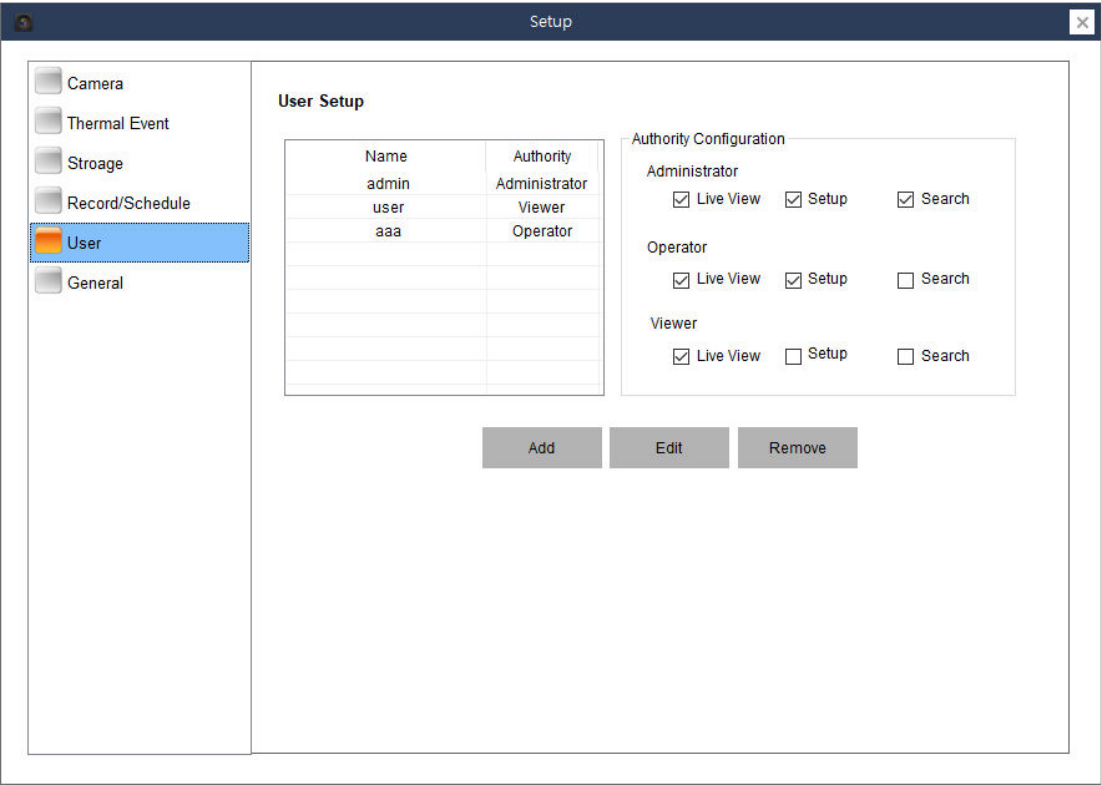


i. Recording/Schedule Setting

Set the recording method to be recorded camera and schedule.

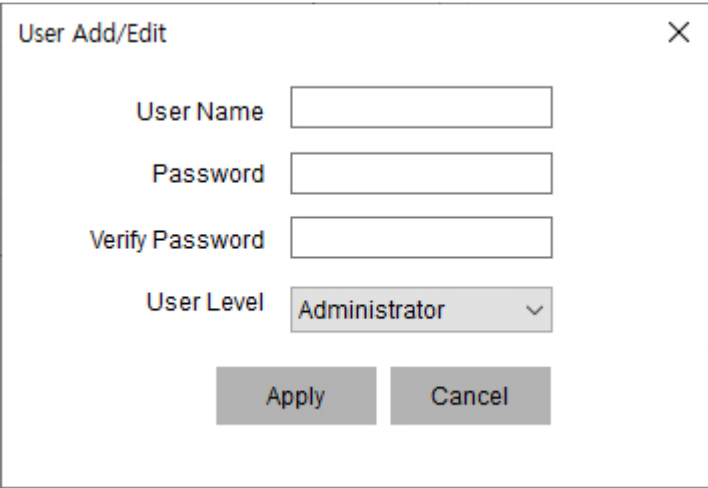
Number	Name	Description
1	Camera List	Mark camera list to use when recording.
2	Recording Method	Choose selected camera's recording method.
3	How to apply set value	Settings can be applied to that camera or the entire camera.
4	Event Setting	Set to save before/after (seconds) of event recorded video.
5	Apply Button	Apply event settings.

D. USER SETTINGS



i. Add User

After clicking 'Add' button, typing the information on the appearing enter box and then add new user by clicking the 'apply' button.



- User Name: Enter name to use as english.
- Password: Enter the password to use to log in as that user.
- Password Confirm: For prevent typing error, enter the password 1 more time.
- Authority Selection

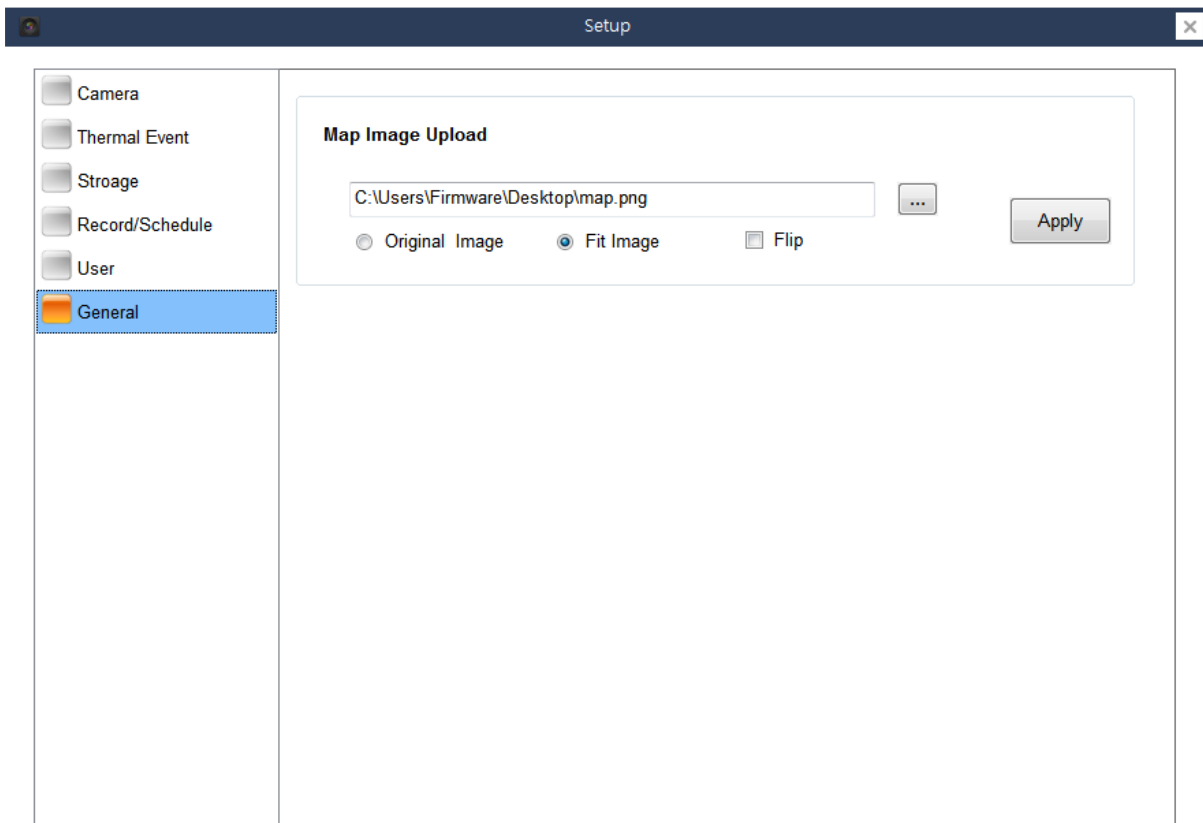
- Administrator: Administrator Authority
- Operator: Operator Authority
- Viewer: Surveillant Authority

ii. Authority Setting

Set the user authority

- Live View: Perform the surveillant role on 'Live View' and 'Map View' Screen.
- Settings: Perform cameras and programme settings on the 'setting' screen.
- Recoding Play: Perform the event recording video check.

E. GENERAL SETTINGS



i. Map Image Upload

Upload the map images to use on the 'map view' screen.

Select the map images to upload clicking '...' button.

- Mark original images: Show the original map images size.
- Images width fit: Show the map images to fit the screen.
- Twist Upside Down: Show the map images to twist Upside Down

After completing the settings, Click the 'Apply' button to finish.