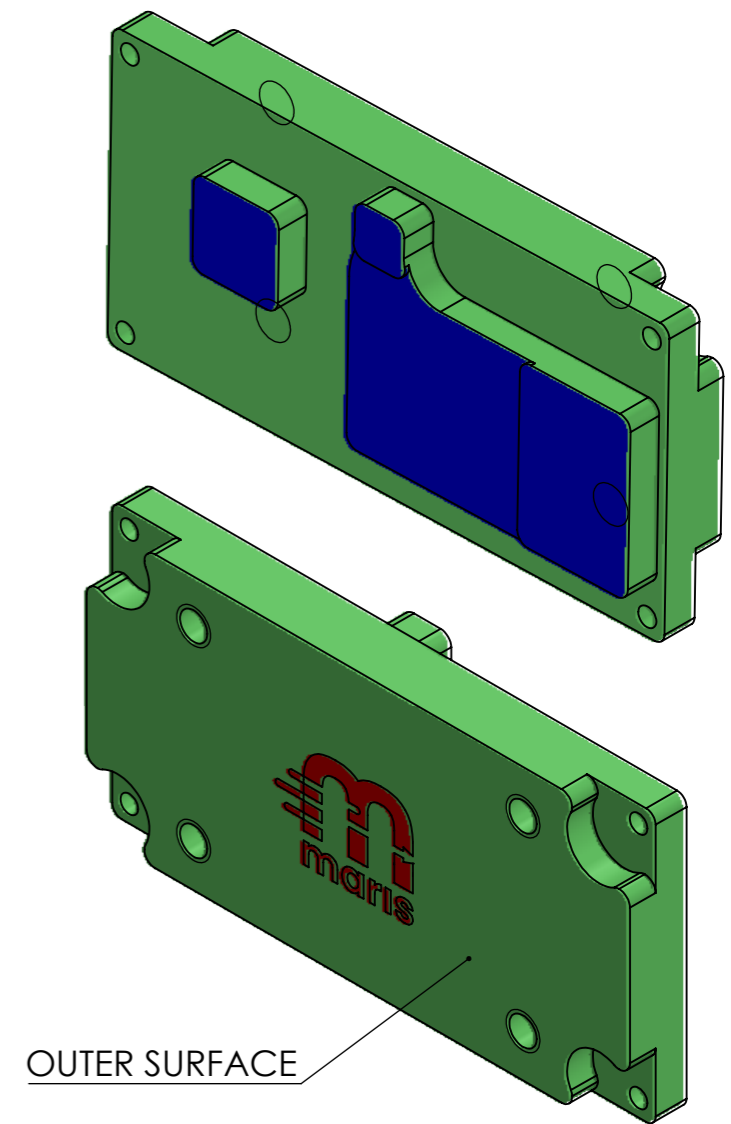
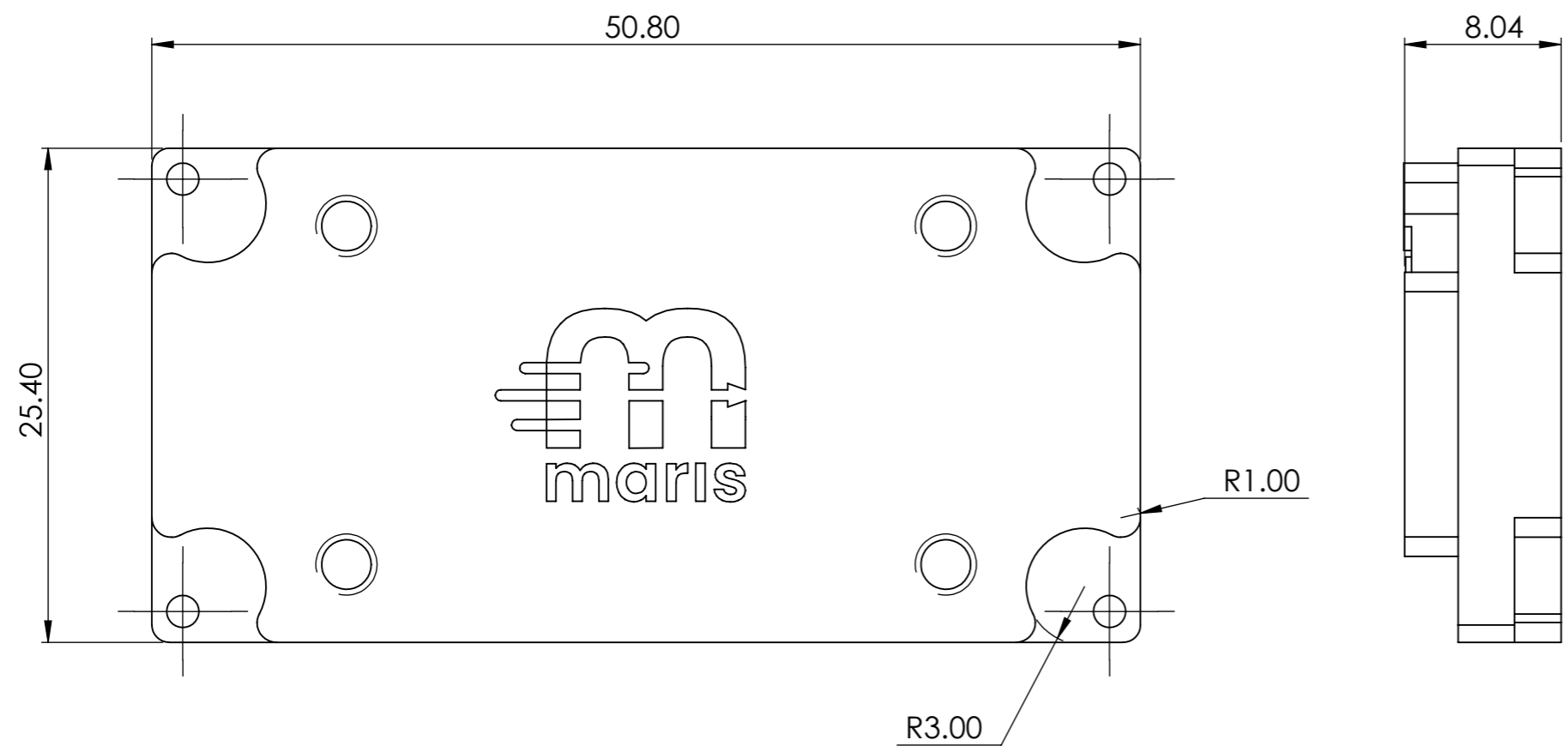


- This document is confidential.  
 - All sole property of "FIT R&D".  
 - Not to be copied or distributed.



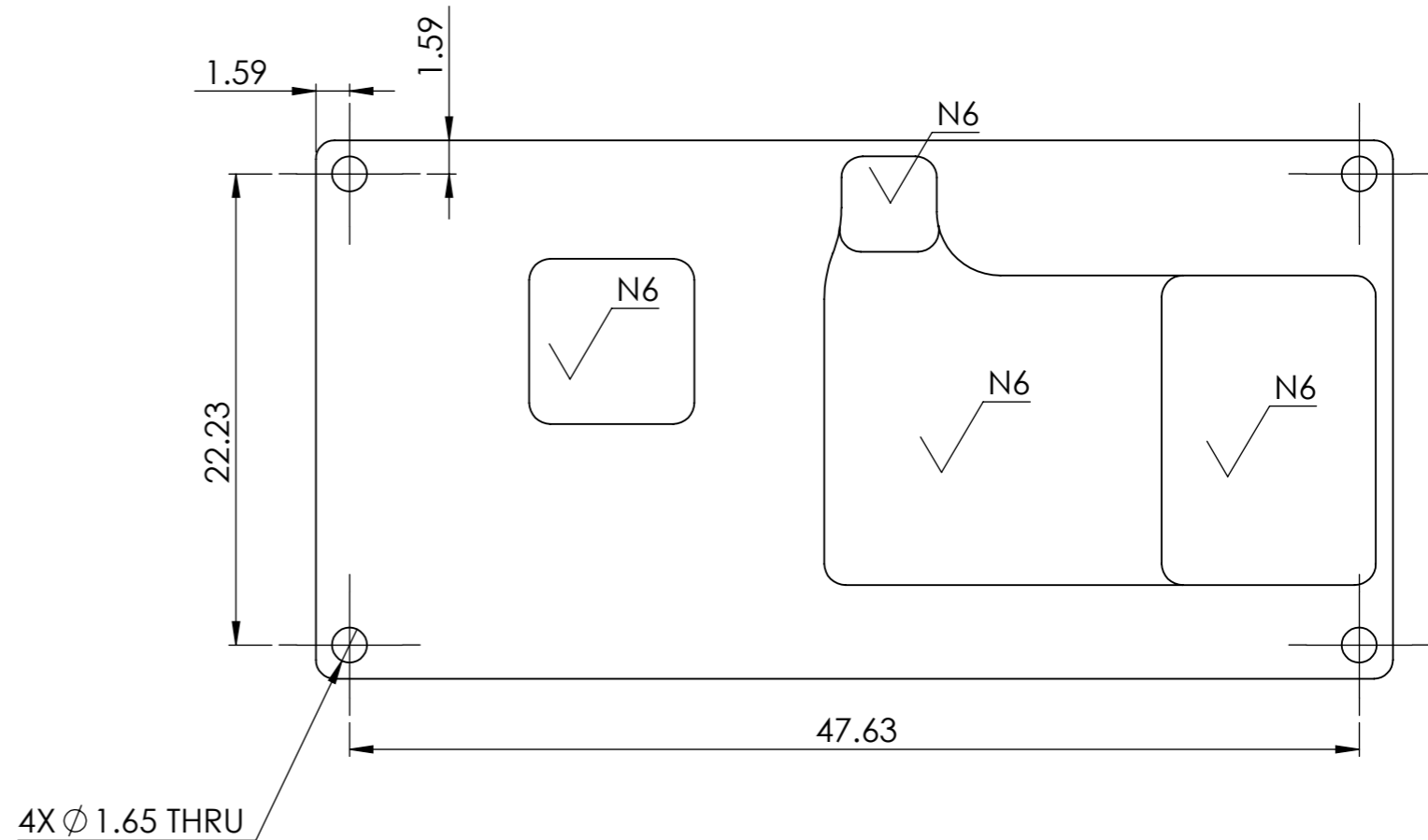
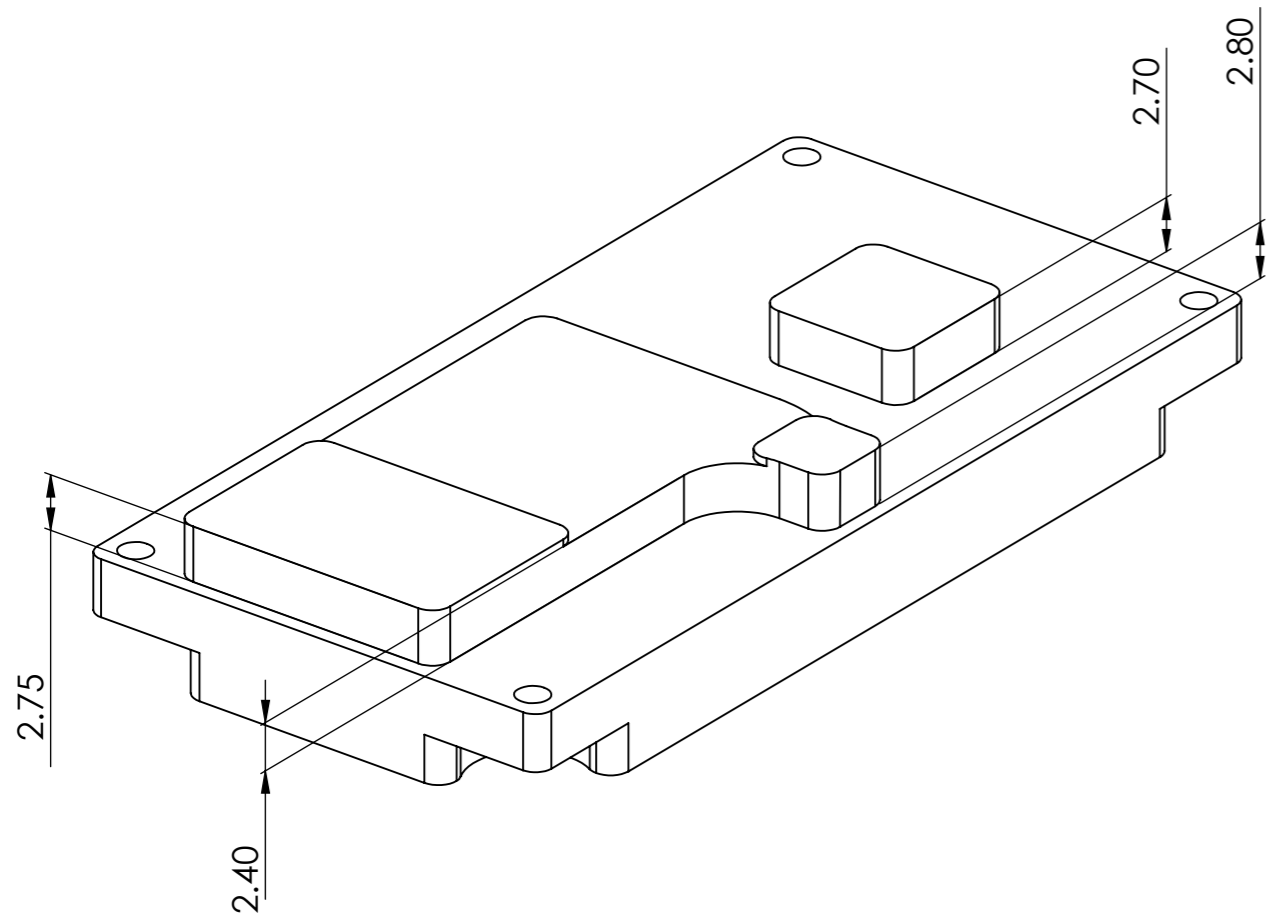
- NOTES:
1. MATERIAL: AL.ALLOY 6061-T6 PER AMS QQ-250/11 OR AMS QQ-A-225/B.
  2. The solid model file may be used for manufacturing and dimensional measurements purposes and shall be used for definition of dimensions not explicitly specified on the drawing. All notes and dimensional requirements specified on the drawing are obligatory.
  3. FINISH:  
 A - Remove machining marks (Outside only)  
 B - SPI D3 - Ra.190-230 made by #24 aluminum oxide sandblasting. OUTSIDE SURFACE ONLY
  4. COATING: Black Sulfuric Anodize per Mil-A-8625 Type II, Class 2
  5. All Faces **Marked BLUE** - 0.05 FLATNESS Tolerance.
  6. **MARKED RED** - LOGO LASER ENGRAVING
  7. Break all sharp edges R0.20 unless mentioned otherwise.
  8. All threads must be masked before plating/anodizing.

MATERIAL:		Aluminum 6061 T6	
FINISH:		See Notes	
UNLESS OTHERWISE SPECIFIED TOL. ARE: X.XX +0.05 X.X +0.1 X ±0.2	ROUGHNESS: See Notes		
	ANGLES	±0.5°	
	DIMENSIONS ARE IN mm		
FIRST ANGLE PROJECTION			
DRAWN	Elad.K	12/10/2022	
DESIGN		12/10/2022	
CHECK		21/07/2024	

**fit** 6 Kompert Street P - +972-(0)77-4418391  
 Tel-Aviv, ISRAEL F - +972-(0)77-4418392 www.fit-r-d.com


DESCRIPTION:		Sheet1	
DWG NO:		338_1001_V04	
REV		A	
<b>A3</b>	SHEET # 1 OUT OF 5	SCALE: 3:1	

- This document is confidential.  
 - All sole property of "FIT R&D".  
 - Not to be copied or distributed.

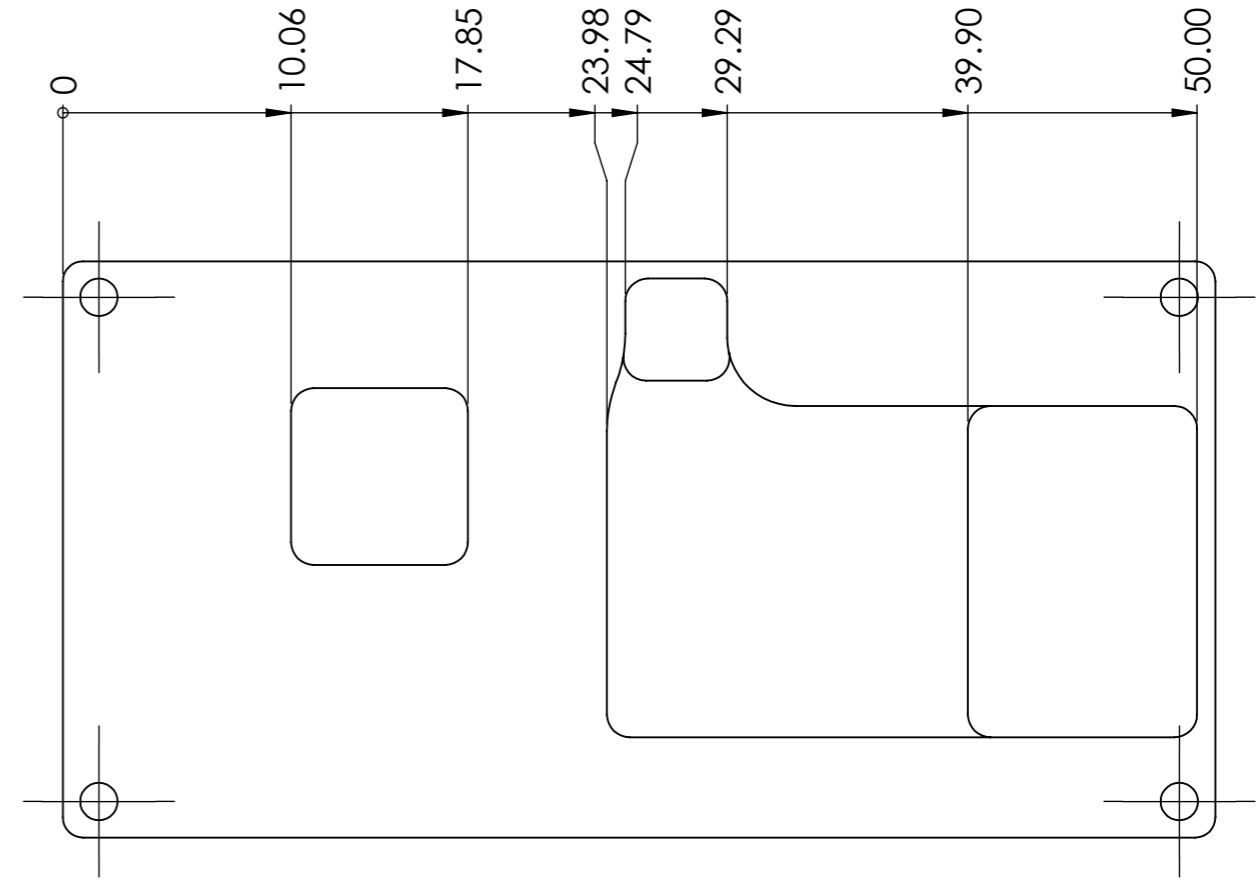
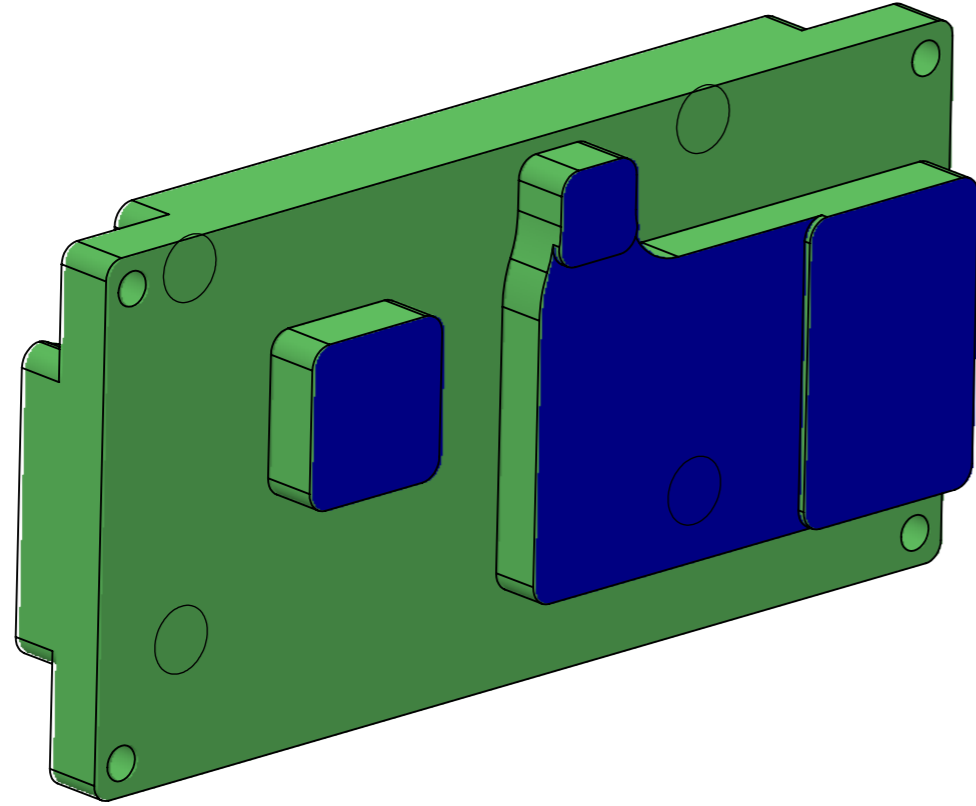


NOTES:

- MATERIAL: AL.ALLOY 6061-T6 PER AMS QQ-250/11 OR AMS QQ-A-225/B.
- The solid model file may be used for manufacturing and dimensional measurements purposes and shall be used for definition of dimensions not explicitly specified on the drawing. All notes and dimensional requirements specified on the drawing are obligatory.
- FINISH:  
 A - Remove machining marks (Outside only)  
 B - SPI D3 - Ra.190-230 made by #24 aluminum oxide sandblasting. OUTSIDE SURFACE ONLY
- COATING: Black Sulfuric Anodize per Mil-A-8625 Type II, Class 2
- All Faces **Marked BLUE** - 0.05 FLATNESS Tolerance.
- MARKED RED** - LOGO LASER ENGRAVING
- Break all sharp edges R0.20 unless mentioned otherwise.
- All threads must be masked before plating/anodizing.


MATERIAL:		Aluminum 6061 T6		 6 Kompert Street P - +972-(0)77-4418391 Tel-Aviv, ISRAEL F - +972-(0)77-4418392 www.fit-r-d.com	
FINISH:		See Notes			
UNLESS OTHERWISE SPECIFIED TOL. ARE:		ROUGHNESS:		DESCRIPTION:	
X.XX	+0.05	See Notes		Sheet2	
X.X	+0.1			DWG NO:	
X	+0.2			338_1001_V04	
ANGLES ±0.5°		NAME	DATE	REV	
DIMENSIONS ARE IN mm		DRAWN	12/10/2022	A	
FIRST ANGLE PROJECTION		DESIGN	12/10/2022		
		CHECK	21/07/2024		
		A3		SHEET # 2 OUT OF 5	
				SCALE: 3:1	

- This document is confidential.  
 - All sole property of "FIT R&D".  
 - Not to be copied or distributed.

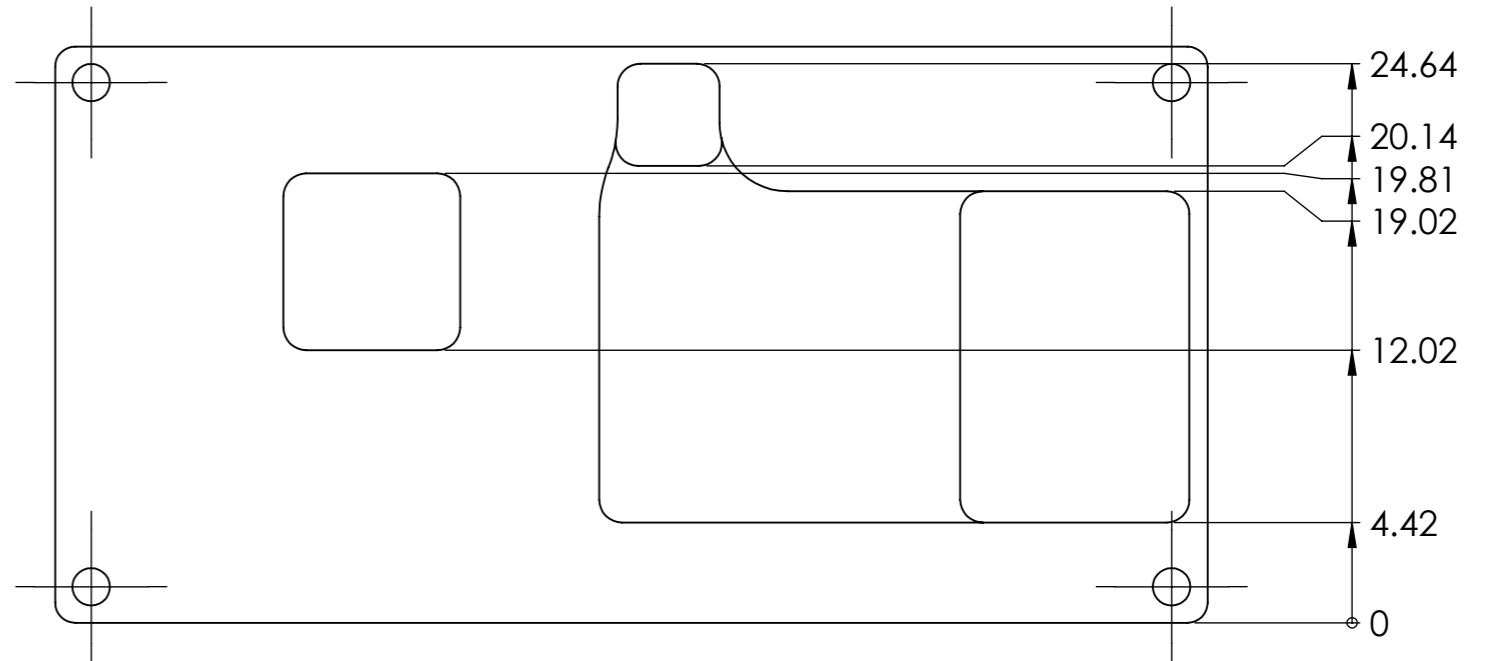
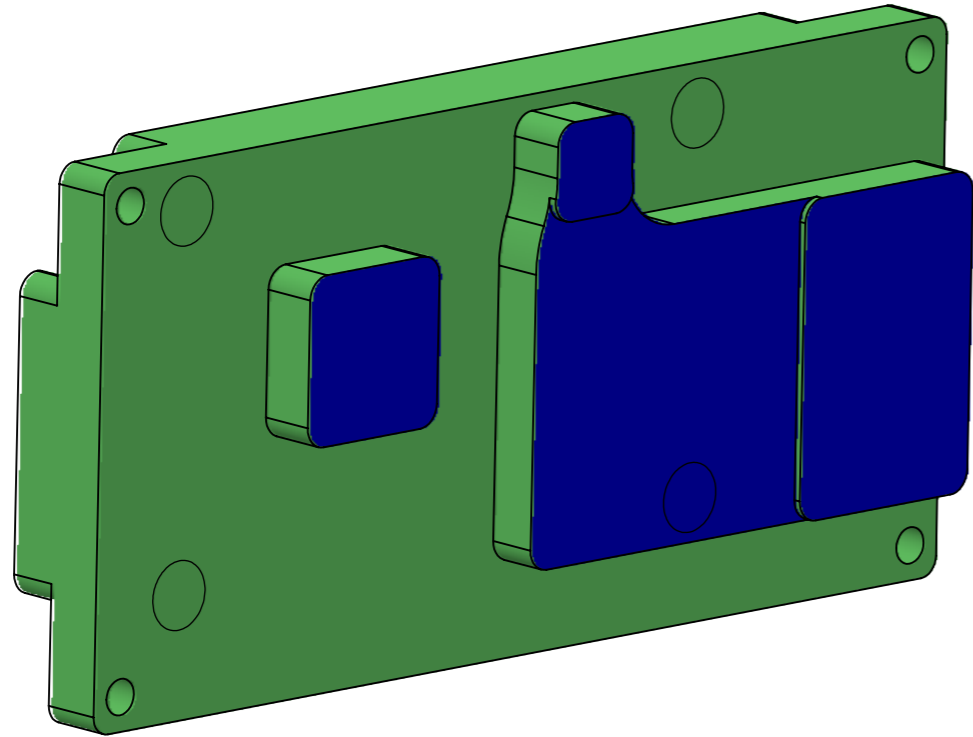


NOTES:


1. MATERIAL: AL.ALLOY 6061-T6 PER AMS QQ-250/11 OR AMS QQ-A-225/B.
2. The solid model file may be used for manufacturing and dimensional measurements purposes and shall be used for definition of dimensions not explicitly specified on the drawing. All notes and dimensional requirements specified on the drawing are obligatory.
3. FINISH:  
 A - Remove machining marks (Outside only)  
 B - SPI D3 - Ra.190-230 made by #24 aluminum oxide sandblasting. OUTSIDE SURFACE ONLY
4. COATING: Black Sulfuric Anodize per Mil-A-8625 Type II, Class 2
5. All Faces **Marked BLUE** - 0.05 FLATNESS Tolerance.
6. **MARKED RED** - LOGO LASER ENGRAVING
7. Break all sharp edges R0.20 unless mentioned otherwise.
8. All threads must be masked before plating/anodizing.

MATERIAL:		Aluminum 6061 T6		 6 Kompert Street P - +972-(0)77-4418391 Tel-Aviv, ISRAEL F - +972-(0)77-4418392 www.fit-r-d.com	
FINISH:		See Notes			
UNLESS OTHERWISE SPECIFIED TOL. ARE:		ROUGHNESS:		DESCRIPTION:	
X.XX +0.05		See Notes		Sheet3	
X.X ±0.1				DWG NO:	
X ±0.2				338_1001_V04	
ANGLES ±0.5°				REV	
DIMENSIONS ARE IN mm				A	
FIRST ANGLE PROJECTION		DRAWN Elad.K 12/10/2022		A3 SHEET # 3 OUT OF 5 SCALE: 3:1	
		DESIGN 12/10/2022			
		CHECK 21/07/2024			

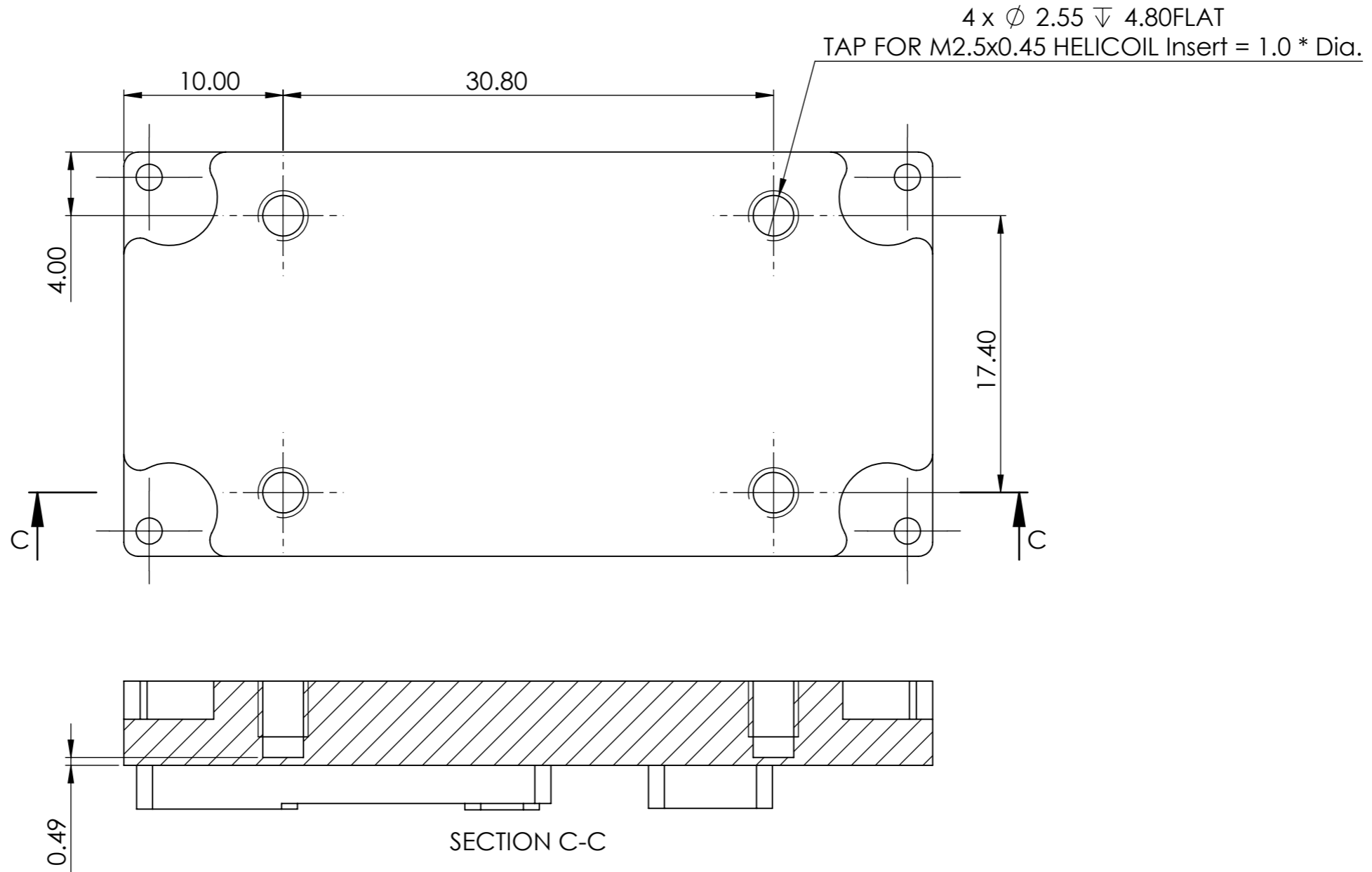
- This document is confidential.  
 - All sole property of "FIT R&D".  
 - Not to be copied or distributed.



- NOTES:
- MATERIAL: AL.ALLOY 6061-T6 PER AMS QQ-250/11 OR AMS QQ-A-225/B.
  - The solid model file may be used for manufacturing and dimensional measurements purposes and shall be used for definition of dimensions not explicitly specified on the drawing. All notes and dimensional requirements specified on the drawing are obligatory.
  - FINISH:
    - A - Remove machining marks (Outside only)
    - B - SPI D3 - Ra.190-230 made by #24 aluminum oxide sandblasting. OUTSIDE SURFACE ONLY
  - COATING: Black Sulfuric Anodize per Mil-A-8625 Type II, Class 2
  - All Faces **Marked BLUE** - 0.05 FLATNESS Tolerance.
  - MARKED RED** - LOGO LASER ENGRAVING
  - Break all sharp edges R0.20 unless mentioned otherwise.
  - All threads must be masked before plating/anodizing.

MATERIAL:		Aluminum 6061 T6		 6 Kompert Street P - +972-(0)77-4418391 Tel-Aviv, ISRAEL F - +972-(0)77-4418392 www.fit-r-d.com	
FINISH:		See Notes		DESCRIPTION:	
UNLESS OTHERWISE SPECIFIED TOL. ARE:		ROUGHNESS:		Sheet4	
X.XX	+0.05	See Notes		DWG NO:	
X.X	+0.1			338_1001_V04	
X	+0.2			REV	
ANGLES ±0.5°		NAME	DATE	A	
DIMENSIONS ARE IN mm		DRAWN	12/10/2022	SHEET # 4 OUT OF 5	
FIRST ANGLE PROJECTION		DESIGN	12/10/2022	SCALE: 3:1	
		CHECK	21/07/2024		

- This document is confidential.  
 - All sole property of "FIT R&D".  
 - Not to be copied or distributed.



NOTES:

1. MATERIAL: AL.ALLOY 6061-T6 PER AMS QQ-250/11 OR AMS QQ-A-225/B.
2. The solid model file may be used for manufacturing and dimensional measurements purposes and shall be used for definition of dimensions not explicitly specified on the drawing. All notes and dimensional requirements specified on the drawing are obligatory.
3. FINISH:  
 A - Remove machining marks (Outside only)  
 B - SPI D3 - Ra.190-230 made by #24 aluminum oxide sandblasting. OUTSIDE SURFACE ONLY
4. COATING: Black Sulfuric Anodize per Mil-A-8625 Type II, Class 2
5. All Faces **Marked BLUE** - 0.05 FLATNESS Tolerance.
6. **MARKED RED** - LOGO LASER ENGRAVING
7. Break all sharp edges R0.20 unless mentioned otherwise.
8. All threads must be masked before plating/anodizing.

MATERIAL:		Aluminum 6061 T6	
FINISH:		See Notes	
UNLESS OTHERWISE SPECIFIED TOL. ARE:		ROUGHNESS:	
X.XX	+0.05	See Notes	
X.X	+0.1		
X	+0.2		
ANGLES		±0.5°	
DIMENSIONS ARE IN mm			
FIRST ANGLE PROJECTION			
DRAWN	Elad.K	DATE	12/10/2022
DESIGN		DATE	12/10/2022
CHECK		DATE	21/07/2024

6 Kompert Street P - +972-(0)77-4418391 Tel-Aviv, ISRAEL F - +972-(0)77-4418392 www.fit-r-d.com		DESCRIPTION:		Sheet5	
		DWG NO:		338_1001_V04	
A3		SHEET # 5 OUT OF 5		SCALE: 3:1	
				REV A	