

ANT-1776 nano – update to firmware 1.0.8.4 using Maris Guard

Contents

ANT-1776 nano – update to firmware 1.0.8.4 using Maris Guard	1
Document info.....	1
1. Setup.....	2
2. Install Maris Guard and Maris Player	2
3. Update firmware using Maris Guard	5
4. Maris player.....	8
4.1. Activation	8
4.2. RTSP streaming setup	10

For further help and advice please contact Antrica on:
 Email: support@antrica.com
 Phone: +44 1628 626098, during UK office hours, and
 ask for technical support

Document info

Version	date	author	Comments
0.1	30-Aug-23	David M	Initial draft – install 3.6.3, Guard 2.8.1, Player 2.3.8

1. Setup

PC windows 10 or 11	to install and run Maris Guard and Maris player
ANT-1776 nano	to be updated
Update file	update-V1.0.8.4-D07_08_2023-13_03_23.tar.bz2

2. Install Maris Guard and Maris Player

Currently file name is: **maris_install_3.6.3_win10_x64.exe**

Available from:

https://downloads.antrica.com/UAV-Encoders/ANT-1776/Software/install-3.6.3_Guard-2.8.1_Player-2.3.8/

Run the application installer.

Figure 1 : Install location

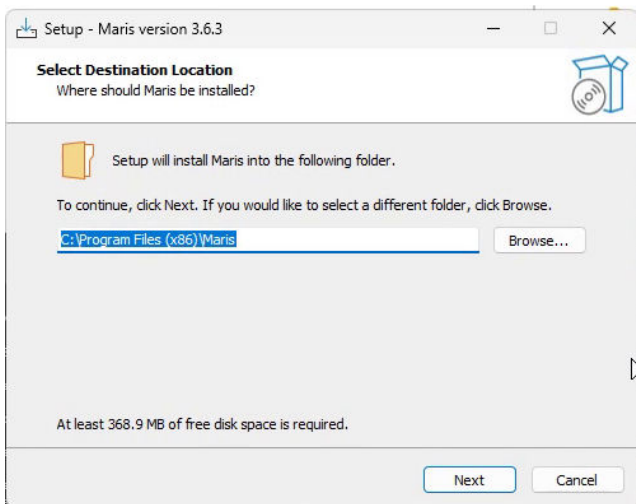


Figure 2 : Start Menu folder name

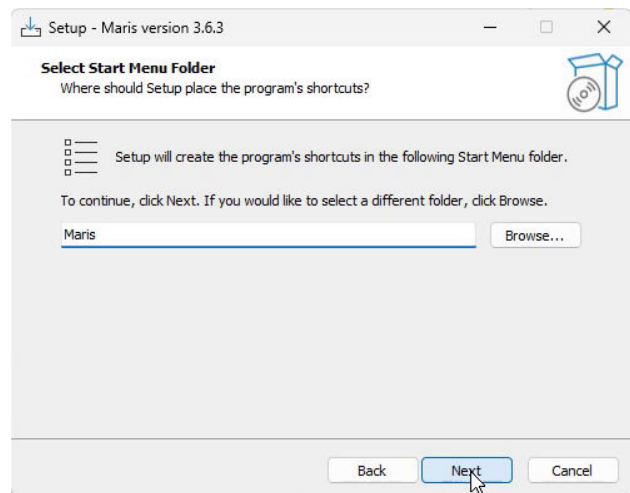


Figure 3 : Are Desktop short cuts required? - recommended

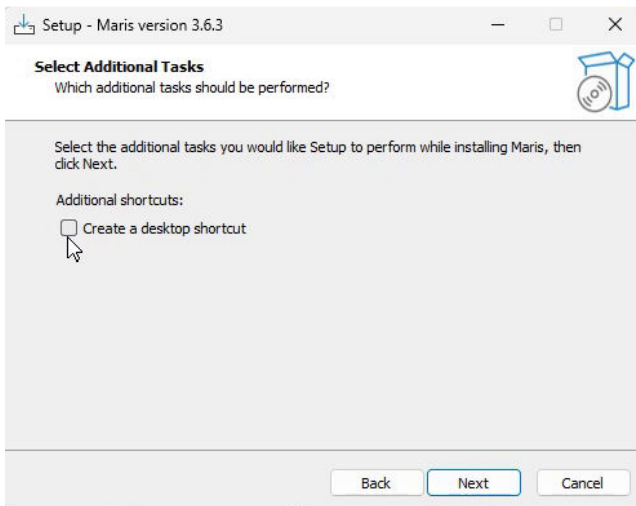


Figure 4 : installation overview

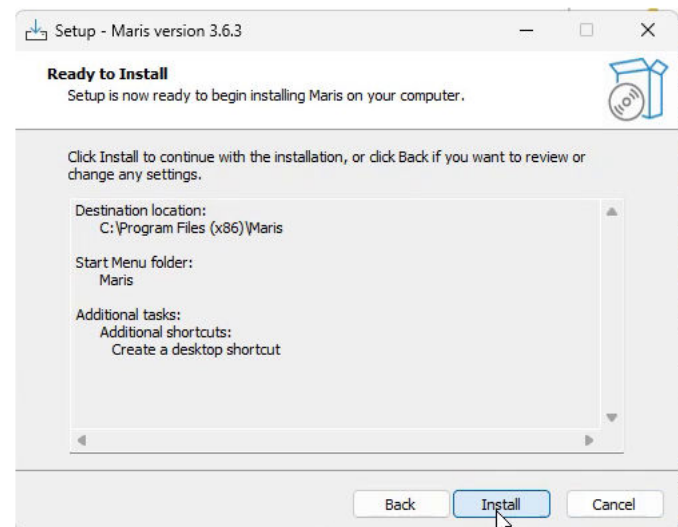


Figure 5 : Install progress

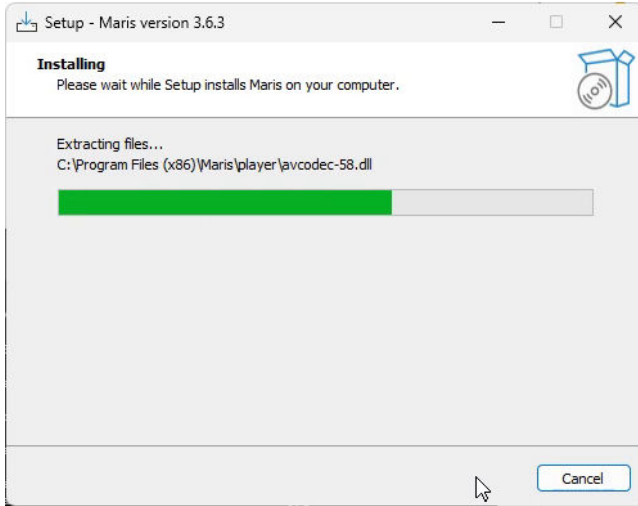


Figure 6 : install Npcap – if required

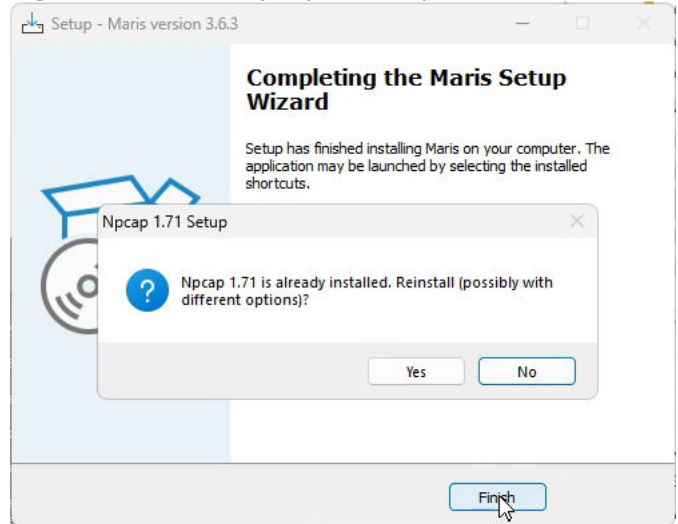


Figure 7 : Npcap License Agreement

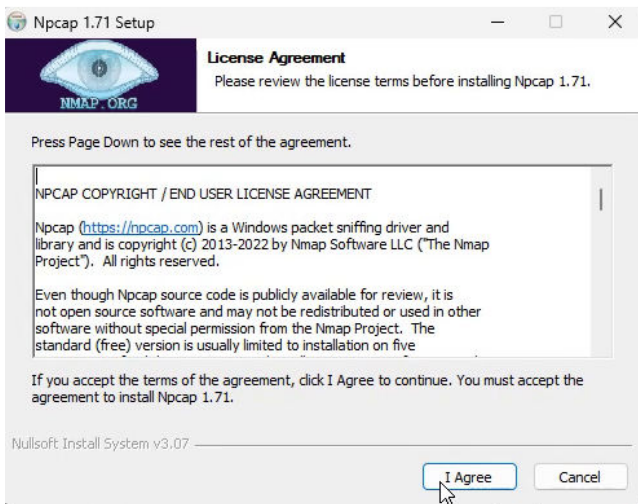


Figure 8 : Npcap install options

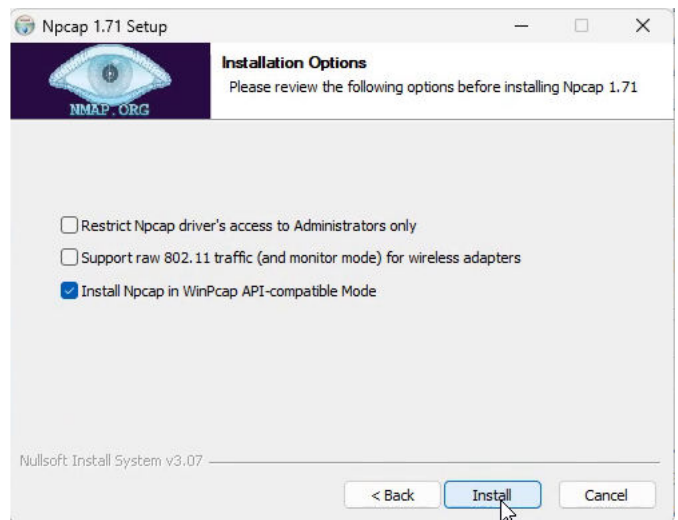


Figure 9 : Npcap installing

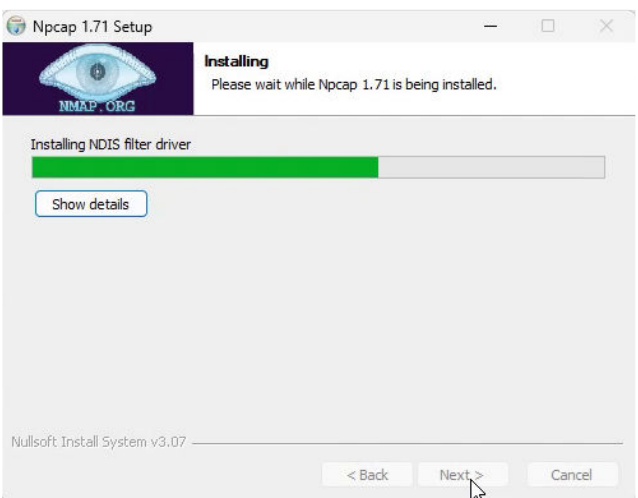


Figure 10 : Npcap installation finished

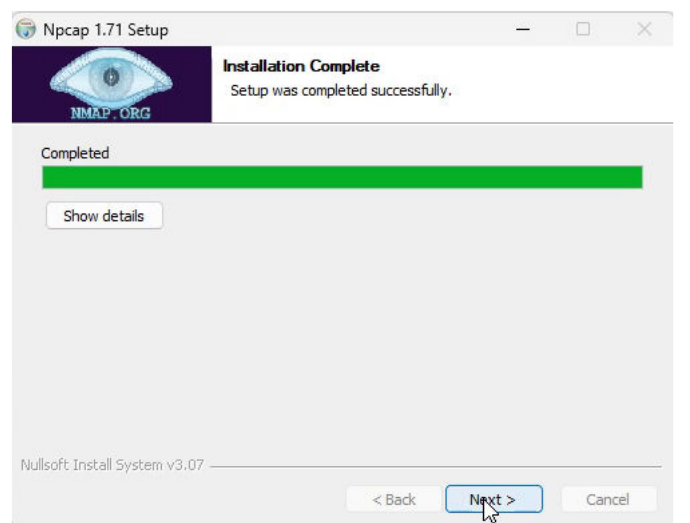


Figure 11 : Npcap installed

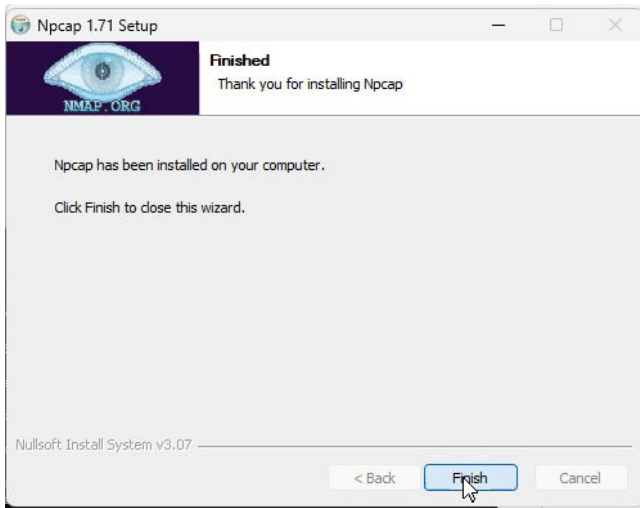


Figure 12 : Maris (Guard and Player) setup complete

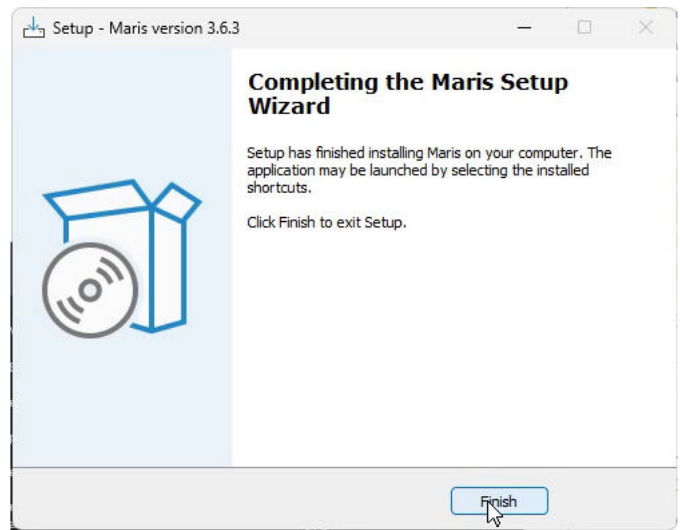
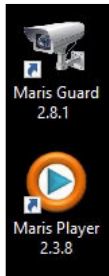


Figure 13 : Desktop shortcuts created



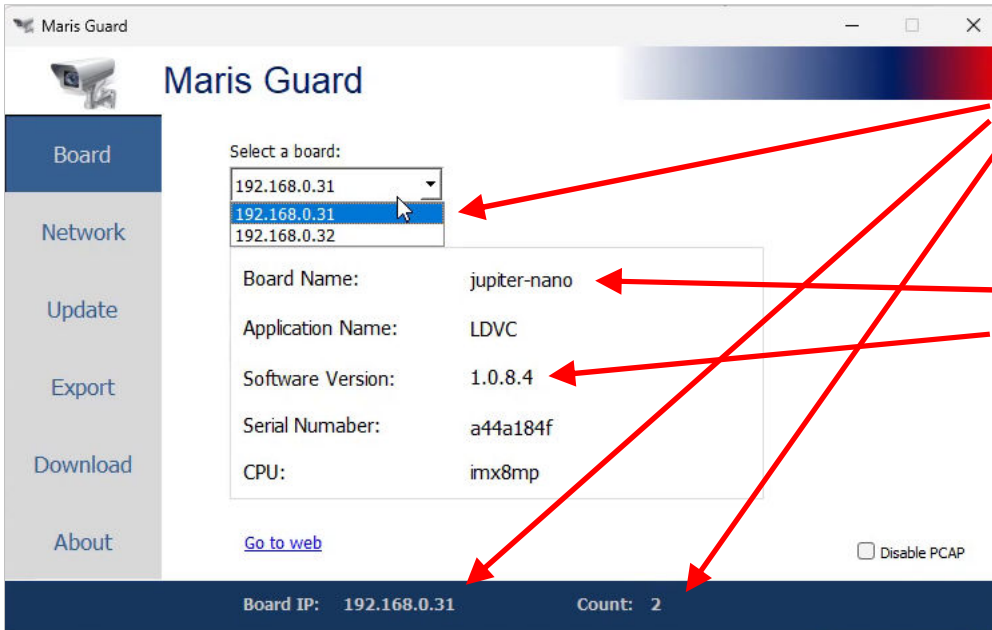
3. Update firmware using Maris Guard

The update file "update-V1.0.8.4-D07_08_2023-13_03_23.tar.bz2" and should not be uncompressed or altered in any way. It can be downloaded from

<https://downloads.antrica.com/UAV-Encoders/ANT-1776/Firmware/CURRENT%20Firmware/V1.0.8.4/>

Run Maris Guard and select the required board

Figure 14 : Maris Guard



In this example there are 2 board on the network, hence either one of 2 IP addresses are selectable

The Board shown is the ANT-1776 nano (Jupiter-nano) with firmware 1.0.8.4

Figure 15 : Select "update" and then click "... " to navigation to file location

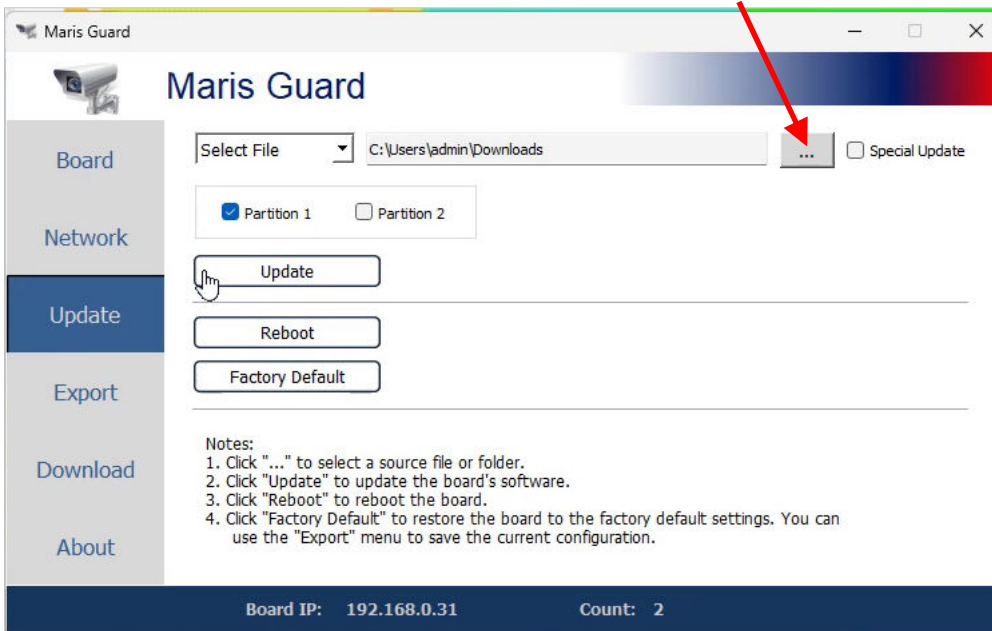


Figure 16 : Navigate to file location, select file then click "Open"

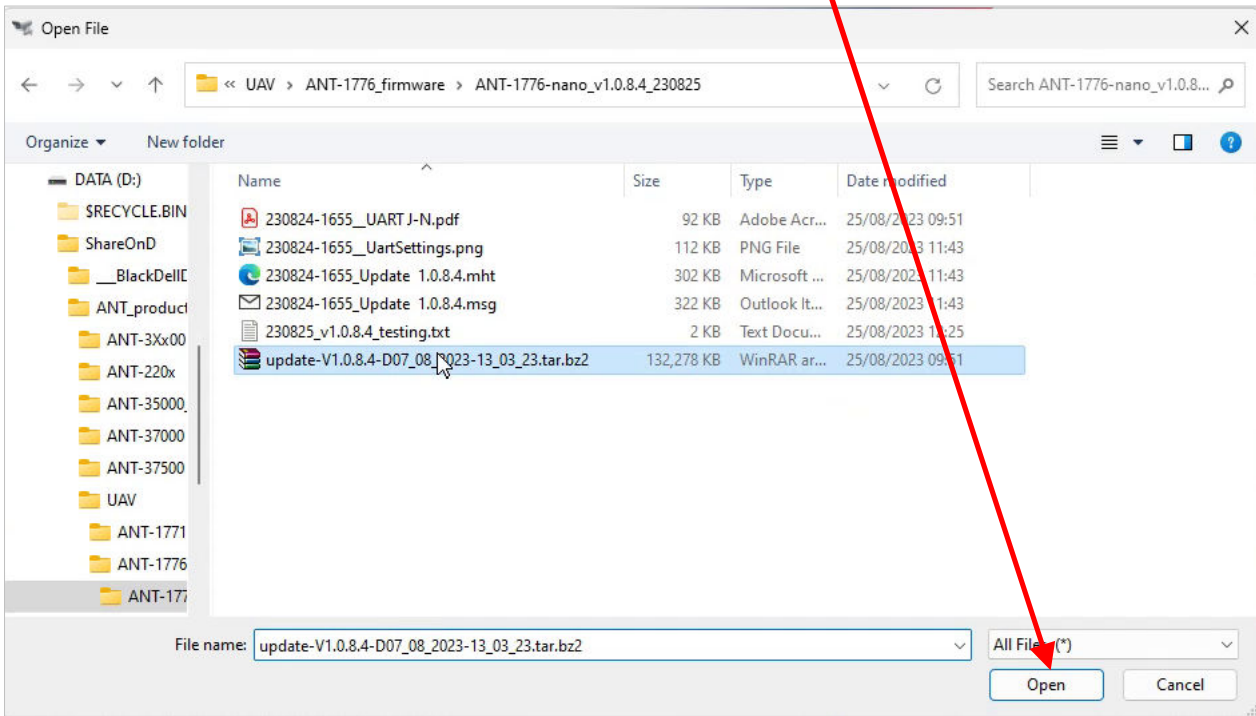


Figure 17 : Click "update"

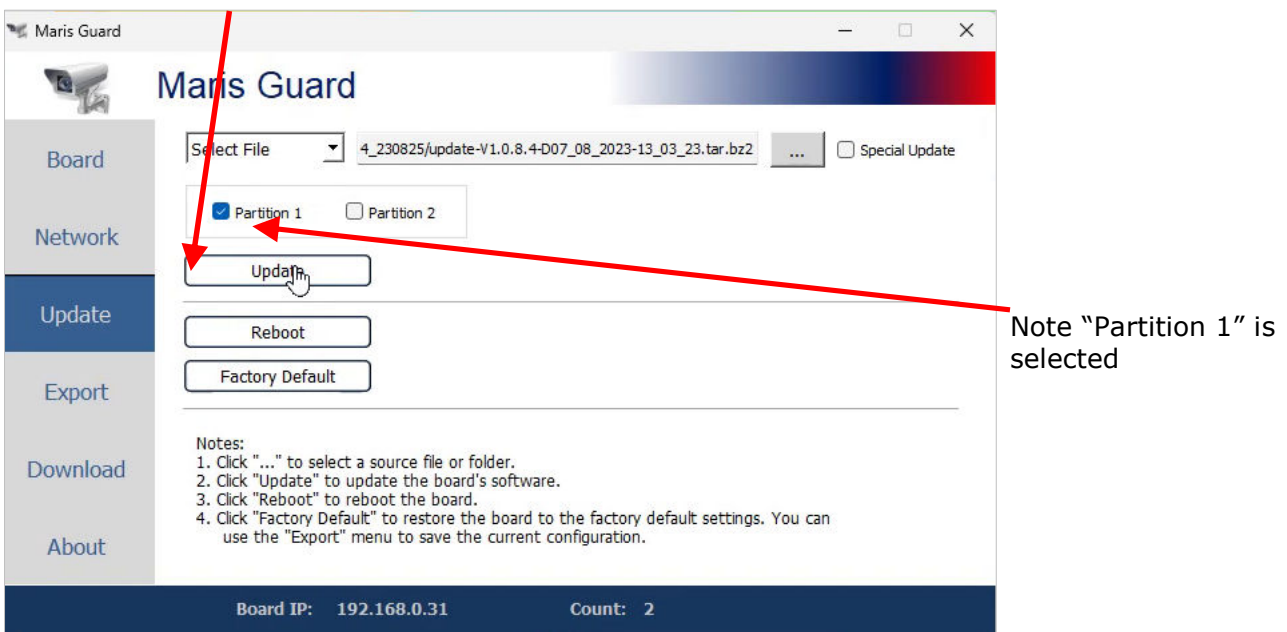
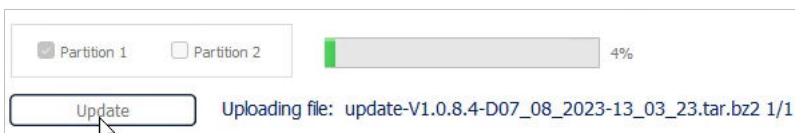


Figure 18 : Update progress #1



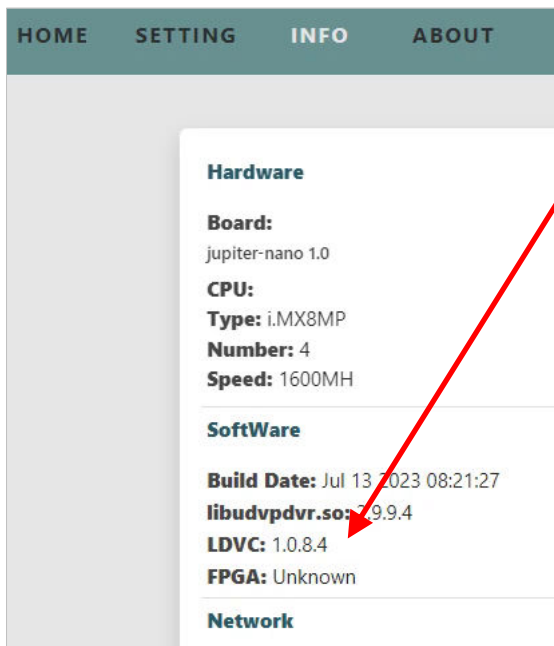
The update takes about 5 minutes. During this time the ANT-1776 nano will reboot.

Figure 19 : Update message once update has completed



The Webpage will now show the 1.0.8.4 version as the installed version, see Figure 20.

Figure 20 : Webpage reported installed version - 1.0.8.4



4. Maris player

4.1. Activation

Once installed the Maris Player has 30 free use period before an activation key is required. The popup appears each time the Player is started, and on the bottom of the player is a reminder

Figure 21 : Maris Player - activation reminder popup

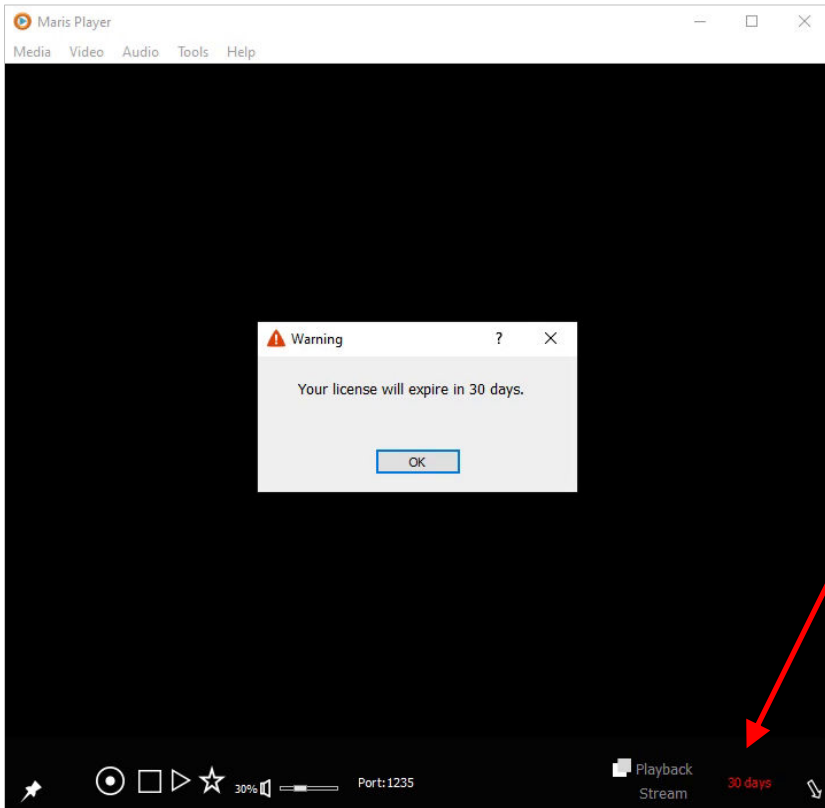


Figure 22 : Access Activate menu

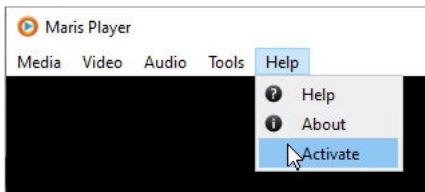
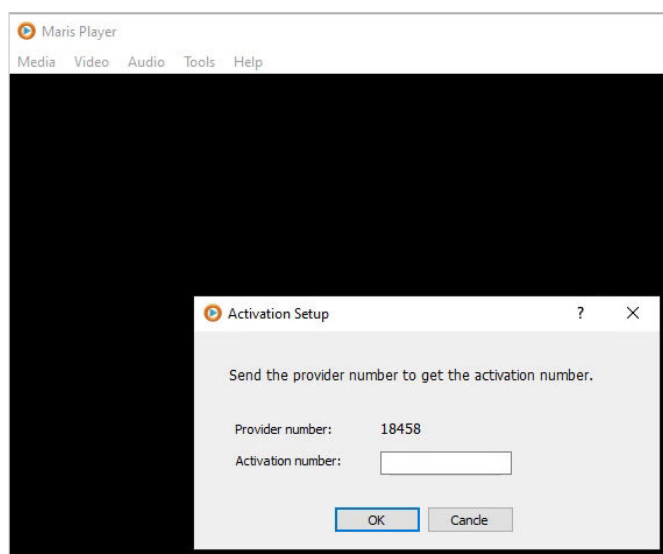


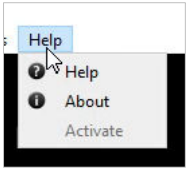
Figure 23 : Activation setup - popup window



You will need to contact us with the 5 digit "Provider number" and we will supply you with the "Activation number". Please note each time the "Activation setup" windows is open and closed the provided number will be different. We have to supply the "Activation number" for the unique "Provider Number".

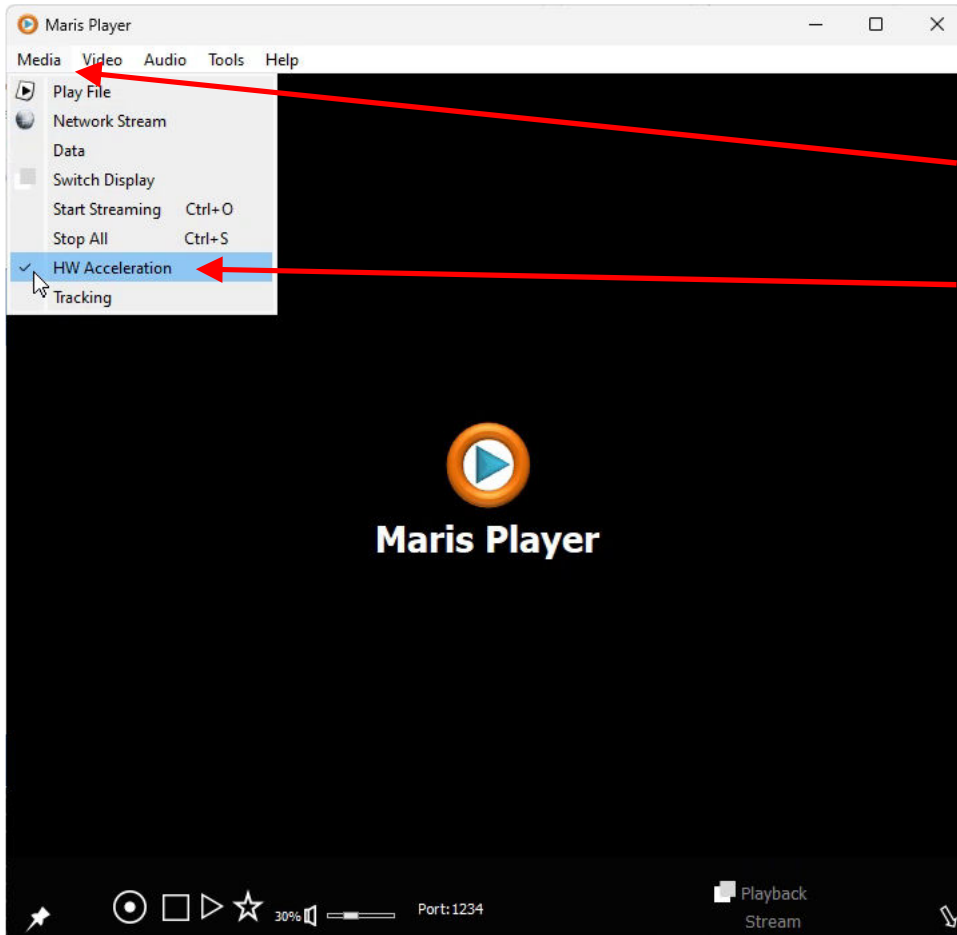
Once activated the "Activate" from the top menu is greyed out

Figure 24 : Maris Player activated



The "HW Acceleration" need to be disabled, see Figure 25.

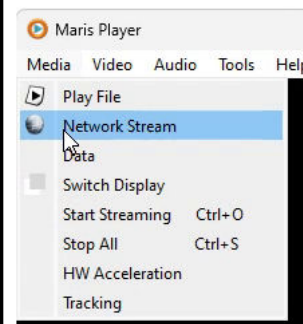
Figure 25 : Maris player setup



From the top menu select "Media"

and then move down to "unselect" "HW Acceleration" so it looks like Figure 26

Figure 26 : "HW Acceleration" un selected



4.2. RTSP streaming setup

To access the RTSP stream from mux1 the RTSP URL is **rtsp://192.168.0.30:554/mux1.sdp** . In Figure 27 and Figure 28 these setting are added. Then click "play" to start the steam

Figure 27 : Access "Network Stream" settings

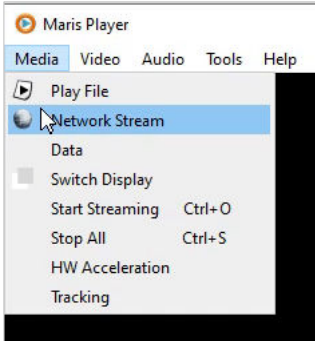


Figure 28 : Network streaming pop-up menu

