



# **Maris Guard and Maris Player**

## **Installation and user guide**

**For use with the ANT-1776 range of UAV modules**

## Table of Contents

Document info ..... 2

**Overview**..... 3

**Installing Maris Guard and Maris Player** ..... 3

**Installation Notes** ..... 3

**Maris Guard**..... 5

**The Maris Guard Home Screen (Board)**..... 5

**Network Settings**..... 7

**Update** ..... 7

**Storage**..... 9

**Download** ..... 9

**About** ..... 11

**Maris Player**..... 12

**Media Menu** ..... 13

**Network Streaming** ..... 14

**Video, Audio, Tools & Help Menus**..... 15

**Statistics**..... 16

**Control Bar**..... 17

For further help and advice please contact Antrica on:

Email: [support@antrica.com](mailto:support@antrica.com)

Phone: +44 1628 626098, during UK office hours, and ask for technical support

## Document info

Version	date	author	Comments
1.0	30-Oct-25	David M	Initial draft based on Software User Guide DR2 and DR3

# Overview

The Maris software suite includes the following elements:

1. **Maris Guard:** A central hub for the Maris platform and it is the first step when setting up your system.
2. **Maris Player:** A standard very low latency player for video streaming developed by Maris.

The two software applications work together to enable you to manage your network of video boards and view the video output.

## Installing Maris Guard and Maris Player

### >> To install Maris Guard

1. Double click the provided Maris installation .exe file.
2. Follow the on-screen prompts.
3. Check **Create a desktop shortcut**.
4. Click **Next** and then **Install**.
5. When the installation is complete, follow the prompts to install winPcap and Visual C.

The following icons for Maris Guard and the Maris Player appear on the Desktop:



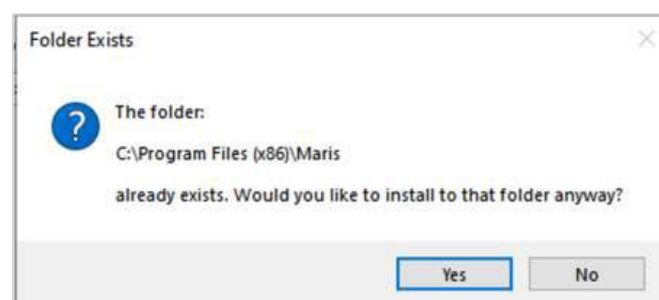
Figure 1: Desktop Icons

If the Maris Guard installation fails, delete the Maris folder (C:\Program Files (x86)\Maris) and reinstall.

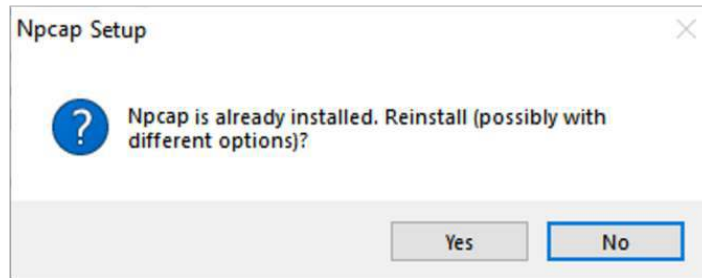
If the winPcap or Visual C installation fails, reboot the computer and reinstall.

## Installation Notes

If you are updating or reinstalling Maris, click Yes, if the following message appears during the installation process:



If the following message appears at the end of the installation process, click No and then click Finish.



# Maris Guard

Maris Guard is a central hub for the Maris platform and it is the first step when setting up your system.

- Discover the IP addresses of the Maris products in each subnet.
- Change the IP address of the board (optional).
- Update the firmware. This can be done after setting the IP for the local network.
- Export configuration.
- Download or delete video and log files from the board.

## The Maris Guard Home Screen (Board)

Maris Guard opens to the following screen with information about the Maris product that has been detected.



Figure 2: Maris Guard Home Screen (Board)

The IP address of the current board appears in the **Select a board** drop-down as well as in the information bar at the bottom of the window. The number of boards in the network (Count) is also displayed in the information bar.

The default IP address for a Maris network board is 192.168.0.30

If you have more than one board, you can choose them from the **Select a board** drop-down list.

If you have one or more boards with the default IP address, we recommend that you add them one at a time. After adding each board, change the IP address using the Network option.

At the bottom of the window you can see the IP address of the current board and the number of boards in the network (Count).

The **Board Name** is the type of Maris board and the **Software Version** is the Maris version installed on the board.

Click **Go to Web** to open Maris Browser in the default web browser and define settings for your Maris products.

You can open the Maris Browser application in any web browser (Chrome, Firefox, Edge, etc.) by typing `http://192.168.0.30` in the address bar, where 192.168.0.30 is the IP address of the board.

## Network Settings

Click **Network** to view or adjust the board's IP address settings. The default IP address for a Maris board is 192.168.0.30.



Figure 3: Network Settings

- Select **DHCP** for the dynamic allocation of an IP address.
- Select **Static IP** to manually enter the board's IP address.
- Edit the **Subnet Mask** and **Default Gateway**, if necessary.
- The board's **MAC Address** is displayed and it can be changed.

Click **OK** to save any changes.

## Update

The Update option enables you to do the following:

- Update the board's firmware.
- Reboot the board.
- Restore the board's settings to the factory default.

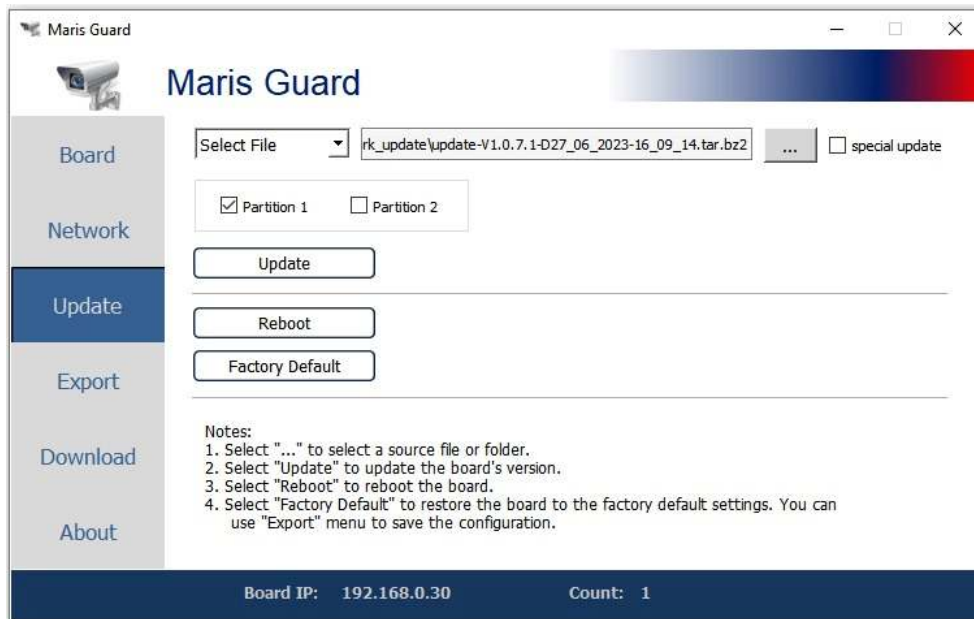


Figure 4: Update Board

**>> To update the board's firmware**

1. When the board is connected to the network, click the three dots to select the firmware update file.
2. Select on which partition to install the update.

Selecting **Partition 1** and **Partition 2** provides redundancy such that if the firmware cannot be loaded from one partition, it can be loaded from the second partition – this feature is currently not **enabled**.

3. Click **Update**.

After a few minutes, a message appears to indicate the update was successful.

- Click **Halt** at the bottom of the screen to cancel the update.

The updated version number appears on the Desktop icon and in the About screen.

**>> To reboot the board**

- Click **Reboot**.

**>> To restore the factory default settings**

1. Click **Factory Default**.
2. Click **Yes** in the window that opens.
3. After restoring the factory defaults, it is recommended to reboot the board.

## Storage

The Storage option enables you to view details about the board's storage capacity. You can also format external storage such as an SD card or USB stick.

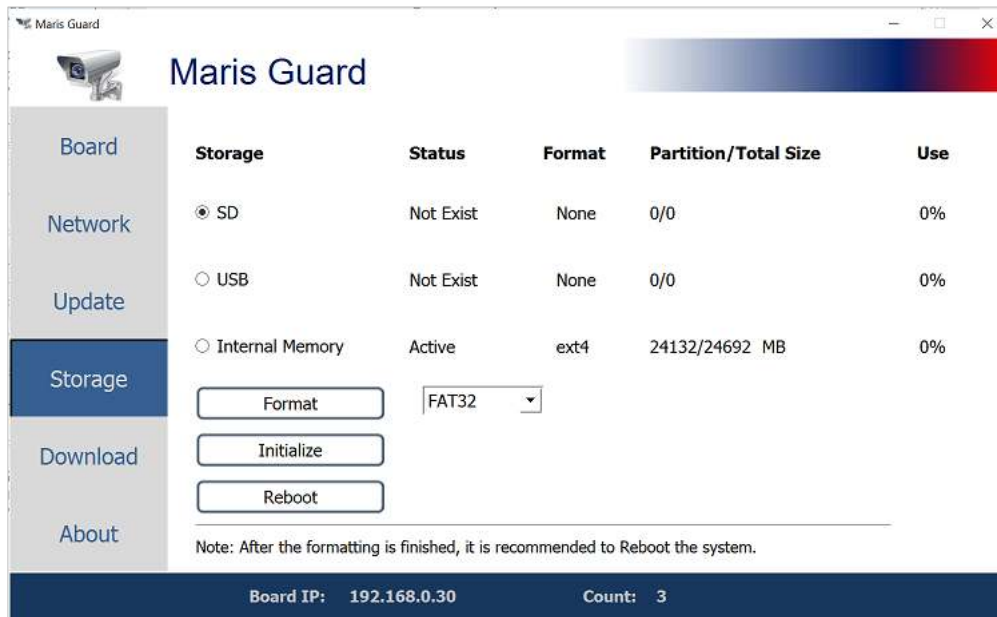


Figure 5: Storage Settings

For the various storage methods, you can see their status, format type, total amount of storage and the percentage used.

### >> To format an SD card or USB stick

Caution: When formatting storage, all the current data will be erased.

1. Click Format.
2. Select the file system from the drop-down.
3. Click Yes in the window that opens.
4. When the formatting is completed, it is recommended to reboot the system.

## Download

You can download or delete the following files from the board:

1. Video recordings
2. Log reports.
3. Configuration settings

In Maris Guard, when you download video recordings or log reports, all the files from the board are downloaded with a certain folder structure. Using the Maris Browser you can select individual video files or certain types of log file.



Figure 6: Download Recordings

**>> To download the video recordings or log reports**

1. When the board is connected to the network, click the three dots to select the folder where the files will be downloaded.

For video recordings, choose a location with sufficient space.

2. Click the download icon in the Recordings or Log section.

The files will be downloaded to a ...\*Record* or ...\*Log* folder within the folder that you specified.

Recordings are organized by MUX and at the end of each file name is mux1, mux2, mux 3, etc.

**>> To delete all the video recordings or log files**

1. When the board is connected to the network, click the Delete button in the Recordings or Log section.

**Note:** This deletes files from the board. It does *not* delete files from your computer.

2. Click **Yes** in the warning pop-up.

The files will be deleted from the board.

**>> To export the board's configuration settings**

1. When the board is connected to the network, click the three dots to select the folder where you want to export the configuration files.

2. Click Export.

The configuration settings for the selected board are exported to the chosen folder. The file name is ldvc\_1.cfg.

## About

The About screen displays the Maris Guard version number.

# Maris Player

Maris Player is a standard streaming player and can play video, including video compressed according to the H.264 and H.265 standards, similar to other players such as VLC. It has some capabilities that VLC does not have, such as displaying video from the RTP transport protocol.

You can use the Maris Player to view the live video stream from a camera or to play back downloaded video.

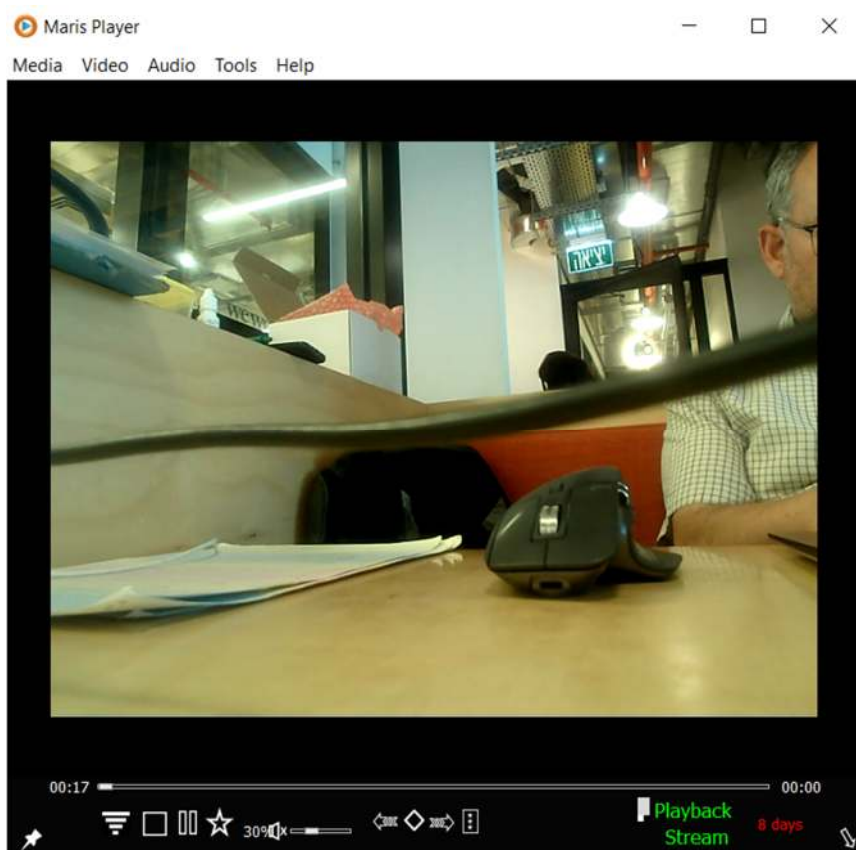


Figure 7: Maris Player

When AI is activated, rectangles appear in Maris Player with the names of the objects that have been identified. In the example below the following items are labeled: a screen (tv), a laptop, a cup and a person's hand.

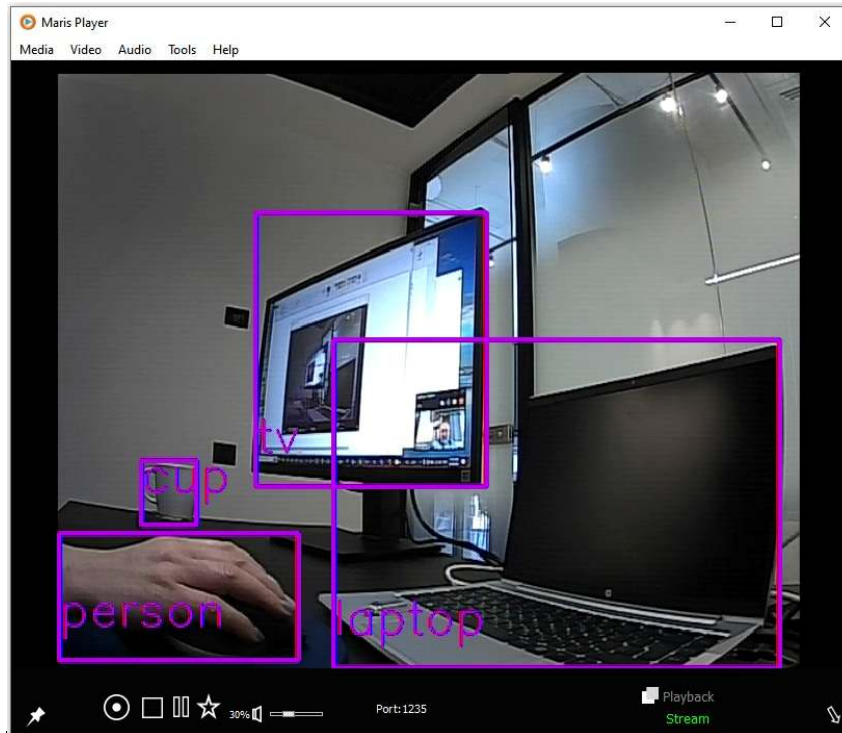


Figure 8: Maris Player with AI activated

You can open multiple Maris Player windows at the same time with different ports and protocols, etc.

## Media Menu

The Media menu has the following options:

Menu Option	Explanation
<b>Play File</b>	<p>Play a recorded video.</p> <p>You can choose the video speed and the direction of play (forwards or backwards.)</p> <p>Check <b>Streaming</b> and enter the port and the board's IP address to stream the video from the board.</p> <p>Click <b>Play</b>.</p>
<b>Network Streaming</b>	See below.
<b>Data</b>	<p>Check <b>Send Data by Ethernet</b> and enter the computer's <b>IP address</b> and the <b>Port</b> number.</p> <p>Check <b>Write to File to...</b></p> <p>Select the location and name of the binary file.</p> <p>Click <b>Set</b> when you have entered the desired settings.</p>
<b>Switch Display</b>	Select this menu option to switch between playback and stream modes in the Player.
<b>Start Streaming</b>	<p>Play a recorded video.</p> <p>You can choose the video speed and the direction of play (forwards or backwards.)</p>

Menu Option	Explanation
	Check <b>Streaming</b> and enter the port and the board's IP address to stream the video from the board. Click <b>Play</b> .
<b>Stop All</b>	Stop the video which is currently being played.
<b>Hardware Acceleration</b>	
<b>Tracking</b>	Select the board, enter the <b>Mux</b> number and click <b>Start</b> .

## Network Streaming

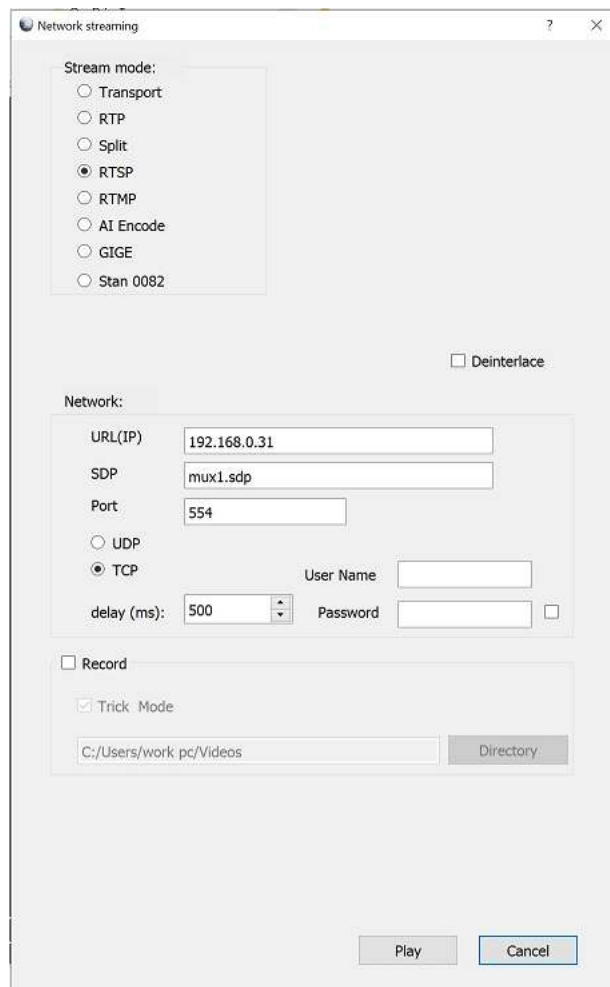


Figure 9: Network Streaming

Select the streaming protocol.

**RTP:** Define the additional fields that open.

**RTSP/RTMP: URL (IP):** Enter the IP address of the board.

**SDP:** Enter mux1.sdp, mux2.sdp, etc. depending on the Mux number.

**Port:** The port number is the same as that defined in **Settings > System > RTSP Server**.

**Multicast:** Enter the board's **IP Address**.

If there is a **Delay**, enter the value in ms.

Check **Record** to record the video stream directly to your computer, as opposed to the video being recorded on the board or an external memory card. Select a **Directory** where the video files will be saved.

Check **Trick Mode** to use the video speed and direction settings chosen in the Play File menu option. When you have entered all the desired settings, click **Play** to display the video stream in Maris Player.

## Video, Audio, Tools & Help Menus











The Video, Audio and Tools menus have the following options:

Menu Option	Explanation
<b>Video</b>	
<b>Fit to Window</b> <b>Fit to Video</b> <b>Full Screen</b>	Video display options
<b>Stabilizer</b>	Stabilize the video display.
<b>Audio</b>	Choose the audio channel.
<b>Tools</b>	
<b>Statistics</b>	See below.
<b>Log</b>	Select items to be logged. Click <b>Update</b> to update the log reports.
<b>Help</b>	
<b>Activate</b>	If Maris Player has not been activated, contact your distributor for an activation code.



## Control Bar

The Control Bar has the following options:

Icon	Explanation
	Pin Maris Player so that it always appear on your screen.
	Appears in Playback mode
	Stop the video.
	Pause the video.
	Tag the video.
	Volume. Click to mute.
	
	
	Toggle between Playback and Stream.
	Hide/Restore the Control Bar.