

ANT-1776: Export (save) and Update (load) configs

Contents

| | |
|----------------------------------------------------------|---|
| ANT-1776: Export (save) and Update (load) configs..... | 1 |
| Synopsis..... | 1 |
| Document info..... | 1 |
| 1. Overview..... | 2 |
| 2. To Save / export config file from ANT-1776 to PC..... | 2 |
| 3. Restore / import config into ANT-1776 from a PC..... | 4 |

Synopsis

Config load / input

The Maris Guard 2.8.1 application currently **cannot** copy the config file from a PC to the ANT-1776.

A file transfer application like FileZilla or WinSCP can be used to move the config file from the PC into the ANT-1776

Config save / export

The Maris Guard 2.8.1 application is able to copy the config file from the ANT-1776 to a location on a windows PC.

A file transfer application like FileZilla or WinSCP can also be used to move the config file from the ANT-1776 to a PC.

File naming convention

The config file name must **ALWAYS** be lvdc_1.cfg

Important information

The ANT-1776 being set the config **MUST** be in a reset / default condition or the config within the config file will be added to the config already present in the ANT-1776.

For further help and advice please contact Antrica on:
 Email: support@antrica.com
 Phone: +44 1628 626098, during UK office hours,
 and ask for technical support

Document info

| Version | date | author | Comments |
|---------|----------|---------|-------------------------------------|
| 0.1 | 7-Mar-24 | David M | Config save / restore - first draft |
| | | | |
| | | | |

1. Overview

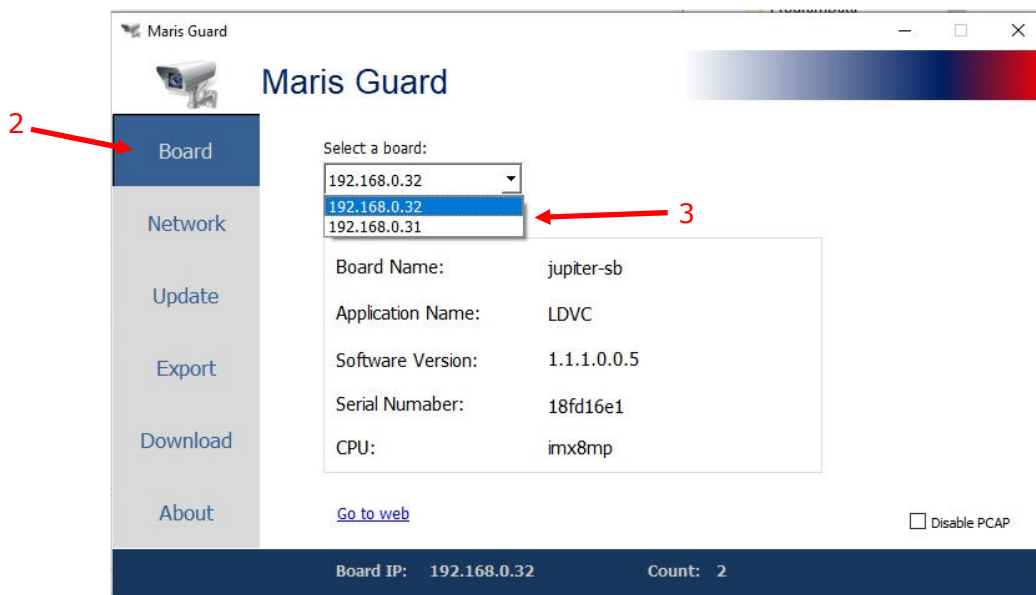
Currently there is an issue with Maris Guards ability to upload / import a config file to the ANT-1776 product range. The uploaded / import of a config can be done via an ftp client, like FileZilla or WinSCP.

The ability to export / save a config file from the ANT-1776 does function in Maris Guard. This export / save can also be done via an ftp client.

2. To Save / export config file from ANT-1776 to PC

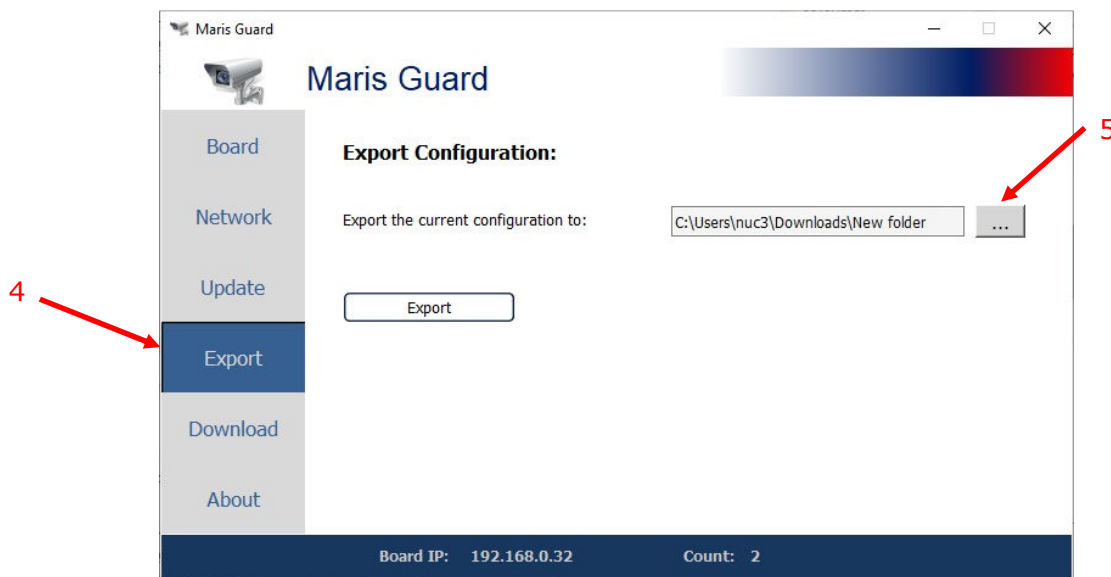
1. Start Maris Guard
2. Select the "Board" Tab – see Figure 1
3. Select, by IP address, the required ANT-1776

Figure 1 : Select ANT-1776



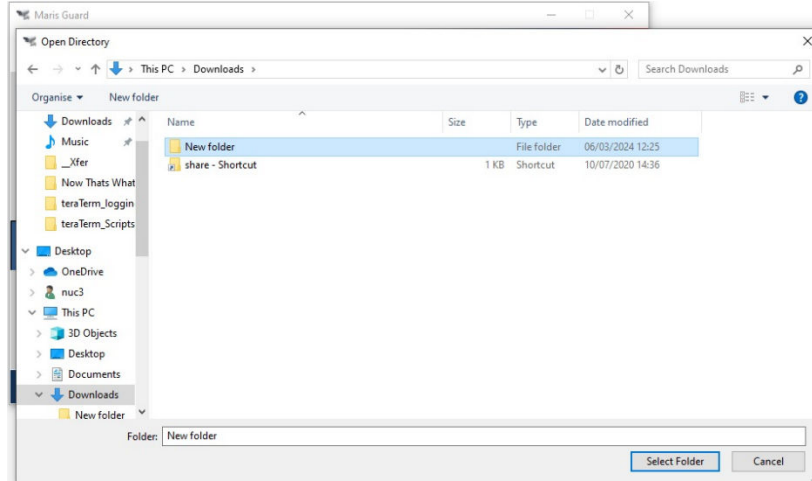
4. select "Export" tab – see Figure 2
5. Select FOLDER location for exported config file

Figure 2 : Export tab



6. Navigate to the required folder location – see Figure 3

Figure 3 : Select folder



7. Click the “Export” button

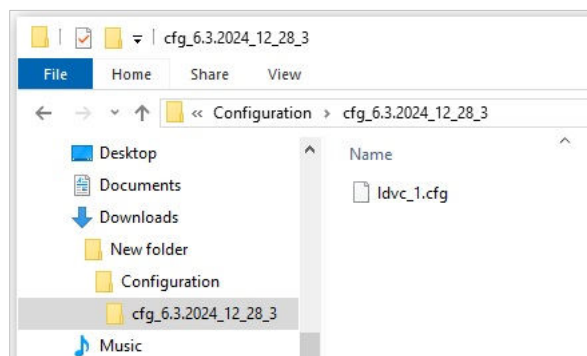
8. Once completed the “saved successfully” message will be seen

Figure 4 : Export of config complete



9. The folder path to the config file is shown in Figure 5. The folder naming is `cfg_<date>.<month>.<year>_<hour>_<minutes>_<seconds>`, in the example shown the `cfg_6.3.2024_12_18_3` is 6th March 2024 with a time of day of 12:28:03. The config will always be named `ldvc_1.cfg`

Figure 5 : folder containing Config file



3. Restore / import config into ANT-1776 from a PC

As mentioned, Maris Guard cannot transfer the config file from the PC to the ANT-1776. This transfer can be done using an FTP client, in the example below WinSCP is being used, but other clients are available.

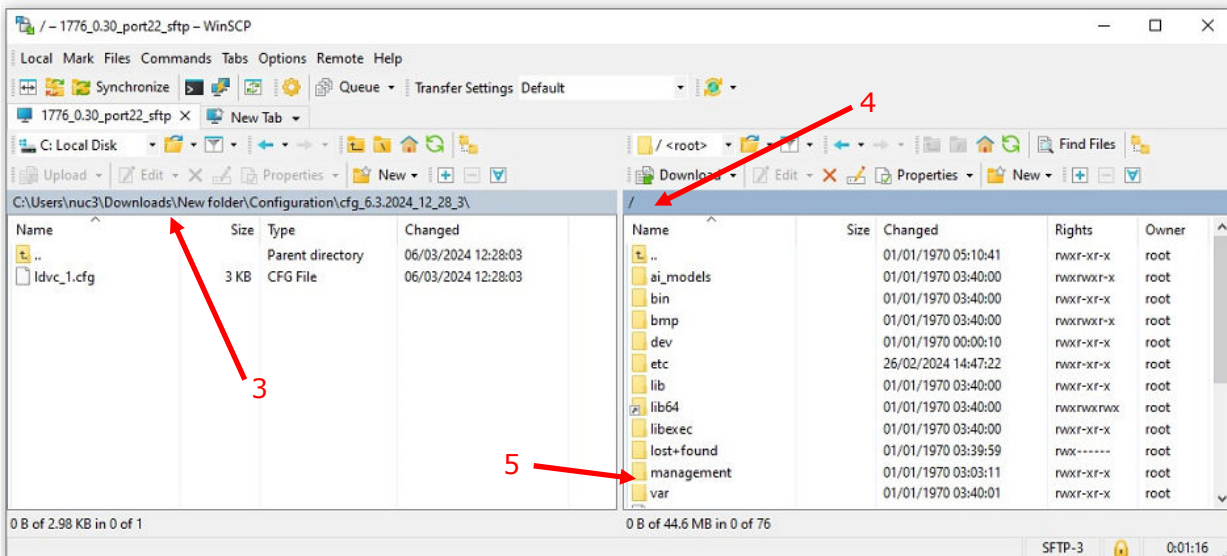
The required information is shown in Table 1

Table 1 : FTP access details

| Parameter | value |
|-----------|-------|
| Protocol | sftp |
| Port | 22 |
| Username | root |
| Password | root |

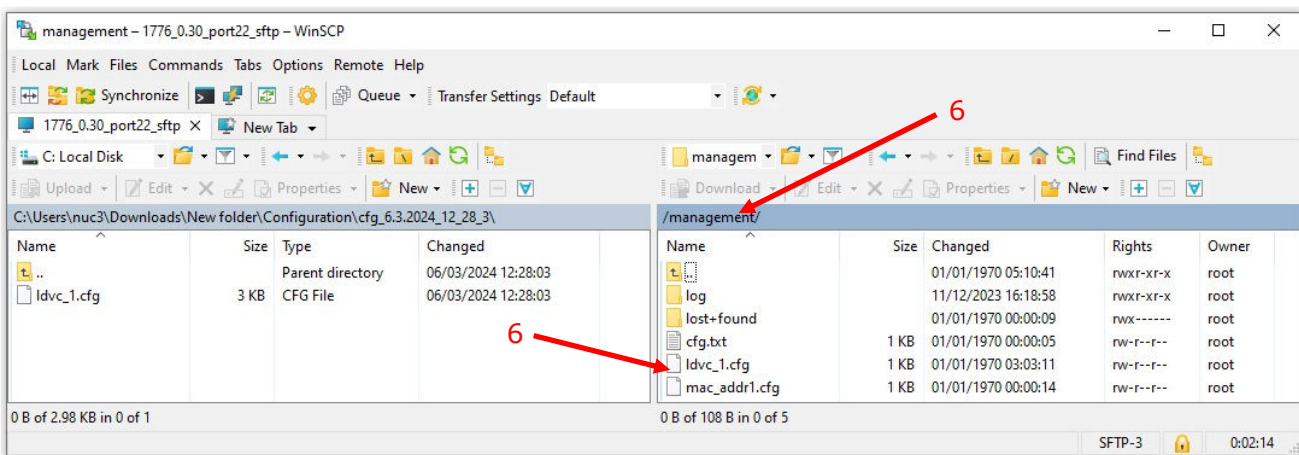
1. Start WinSCP and log in with the ANT-1776's IP address and the detail in Table 1
2. Once logged in you will see a window like that shown in Figure 6.
3. **Note** on the left-hand side is the path the ldvc_1.cfg config file
4. On the right side is the root directory of the ANT-1776.
5. Navigate to the "management" folder in the ANT-1776

Figure 6 : WinSCP - config file on PC vs root of ANT-1776



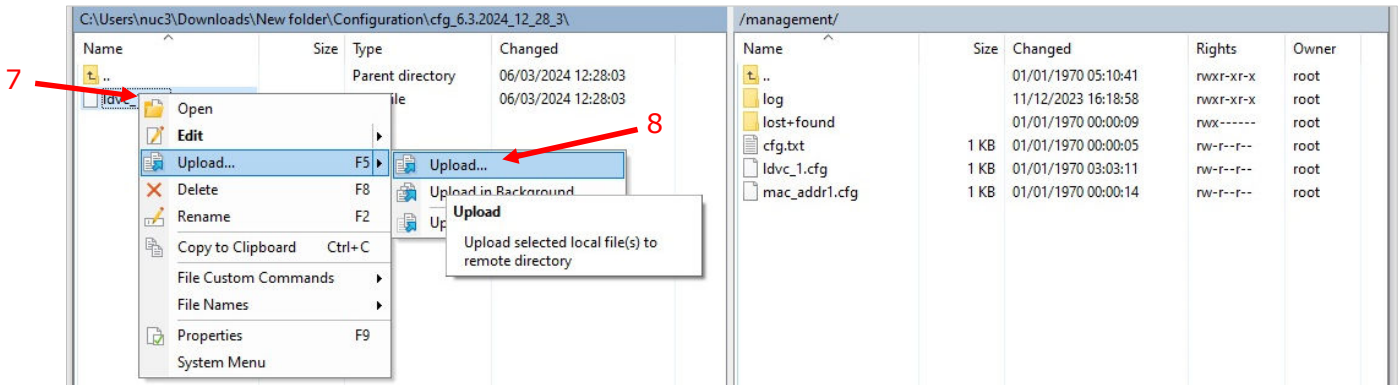
6. Once in the "management folder" you can see the ANT-1776's config file, see Figure 7.

Figure 7 : WinSCP config file on PC vs management folder of ANT-1776



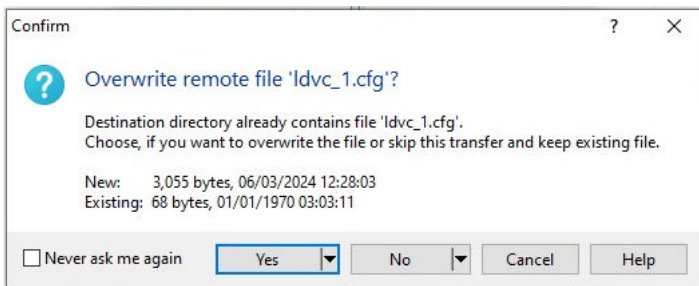
7. Right click the Idvc_1.cfg in the PC windows, as shown in Figure 8
8. Navigate to Upload

Figure 8 : Upload config from PC to ANT-1776



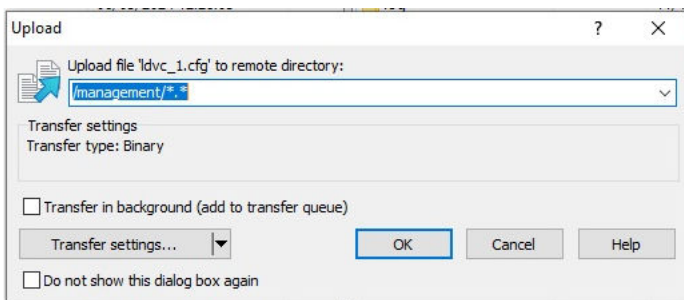
9. There will then be an overwrite message – see example in Figure 9
10. Click “Yes” to this.

Figure 9 : WinSCP overwrite message



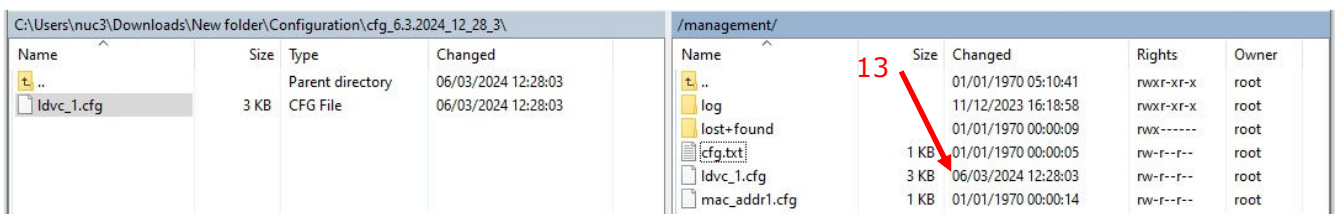
11. There will then be an uploaded message – see example in Figure 10
12. Click “OK” to this.

Figure 10 : Uploaded file from PC to ANT-1776



13. The config file Idvc_1.cfg from the PC is in the AMT-1776 management folder. Note the date / time stamp is the same. Compare this to the date / time shown in Figure 7 and Figure 8 of 01/01/1970 03:03:01

Figure 11 : config from PC now copied to ANT-1776



14. A reboot or power cycle is required to make this config the current config.