

# ONVIF profile detection with 3rd party “ONVIF device manager” tool

## Contents

ONVIF profile detection with 3rd party “ONVIF device manager” tool .....	1
Document info.....	1
1. Confirm ONVIF profiles are present.....	2
1.1. ONVIF Device Manager (ODM) .....	2
1.1.1. Detecting camera .....	2
1.1.1.1. Auto Scan – default mode .....	2
1.1.1.2. add camera manually .....	3
1.1.2. Accessing camera.....	4
1.1.3. Getting RTSP URL.....	8

The document is a guide on how to use ONVIF Devie Manger (ODM) to verify the video of an ONVIF profile.

Please note that ODM is an older tool and only supports h.264 video.

For further help and advice please contact Antrica on:  
 Email: [support@antrica.com](mailto:support@antrica.com)  
 Phone: +44 1628 626098, during UK office hours,  
 and ask for technical support

## Document info

Version	date	author	Comments
0.1	13-Nov-25	David M	Based on section 2 of “ANT-37000A trouble Shooting Guide v0.4 ”

# 1. Confirm ONVIF profiles are present

## 1.1. ONVIF Device Manager (ODM)

Using a third-party tool, such as ONVIF Device manager to confirm the camera has ONVIF profiles. ONVIF Device manager (ODM) version 2.2.250 is free to download from <https://sourceforge.net/projects/onvifdm/files/onvifdm-v2.2.250/> or [https://downloads.antrica.com/Decoders/ANT-36000/Software/ONVIF\\_Device\\_Manager/](https://downloads.antrica.com/Decoders/ANT-36000/Software/ONVIF_Device_Manager/)

If the camera you require is not found it maybe that ONVIF profiles are not setup with the camera, or there maybe network or other issues. If you cannot find the camera with ODM then a decoder may also not be to find the camera.

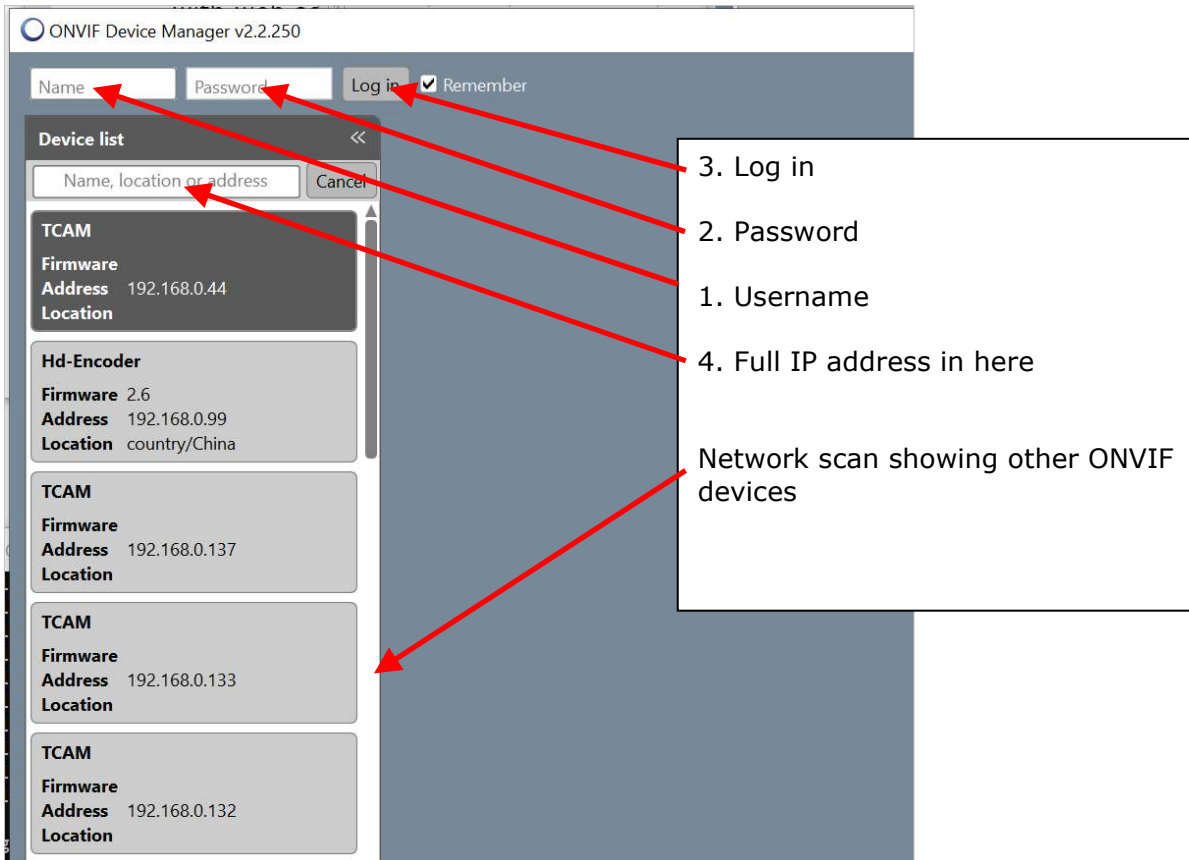
### 1.1.1. Detecting camera

#### 1.1.1.1. Auto Scan – default mode

Once installed run ODM. It will scan the network and find **most** Camera with ONVIF profiles. Input username, password click "Log in" and input full IP address of camera in the field shown in Figure 1.

If the camera is not found you can add it manually – see "1.1.1.2 add camera manually"

Figure 1 : ODM at start-up



### 1.1.1.2. add camera manually

Click the "Add" button at the bottom right of the ODM windows, as shown in Figure 2. A pop-up windows appears as show in Figure 3. Add the correct detail for camera / encoder / device. You will need to know the ONVIF port, by default it is port 80, but if your camera has a different port it will need to added like:

[http://192.168.1.168:7070/onvif/device\\_service](http://192.168.1.168:7070/onvif/device_service)

In this example to the ONVIF port is 7070 and IP address is 192.168.1.168. Once set click "Apply", as shown in Figure 4.

If you filter by IP address you will see the added device in the list, as shown in Figure 5.

Figure 2 : Add camera's IP manually

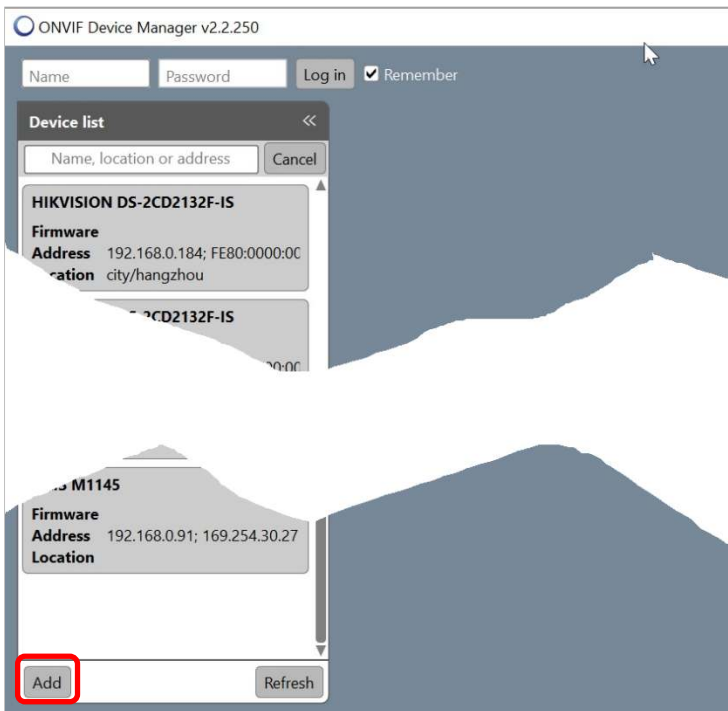
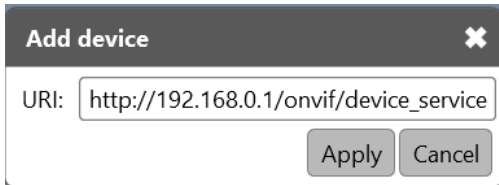
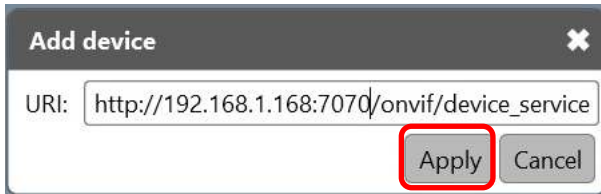


Figure 3 : Add camera's IP manually



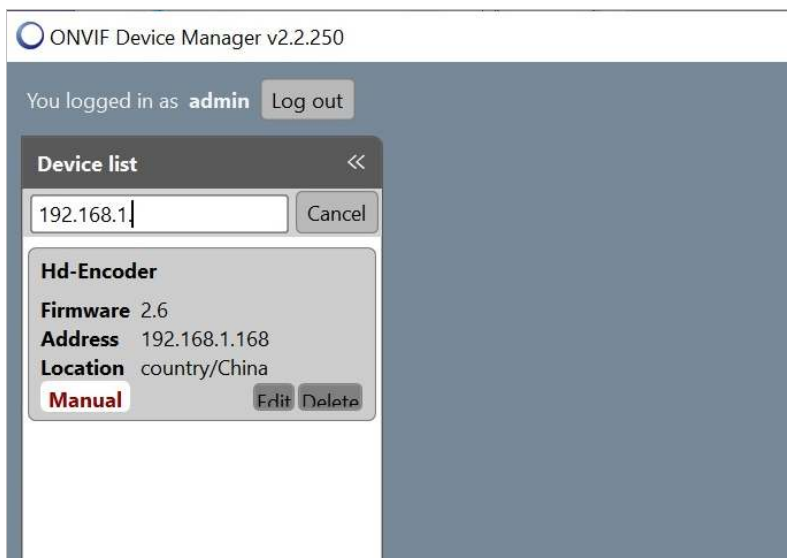
A dialog box titled "Add device" with a close button (X) in the top right corner. It contains a text input field labeled "URI:" with the value "http://192.168.0.1/onvif/device\_service". Below the input field are two buttons: "Apply" and "Cancel".

Figure 4 : Apply camera's IP manually



A dialog box titled "Add device" with a close button (X) in the top right corner. It contains a text input field labeled "URI:" with the value "http://192.168.1.168:7070/onvif/device\_service". Below the input field are two buttons: "Apply" and "Cancel". The "Apply" button is highlighted with a red rectangular border.

Figure 5 : manually added device in list

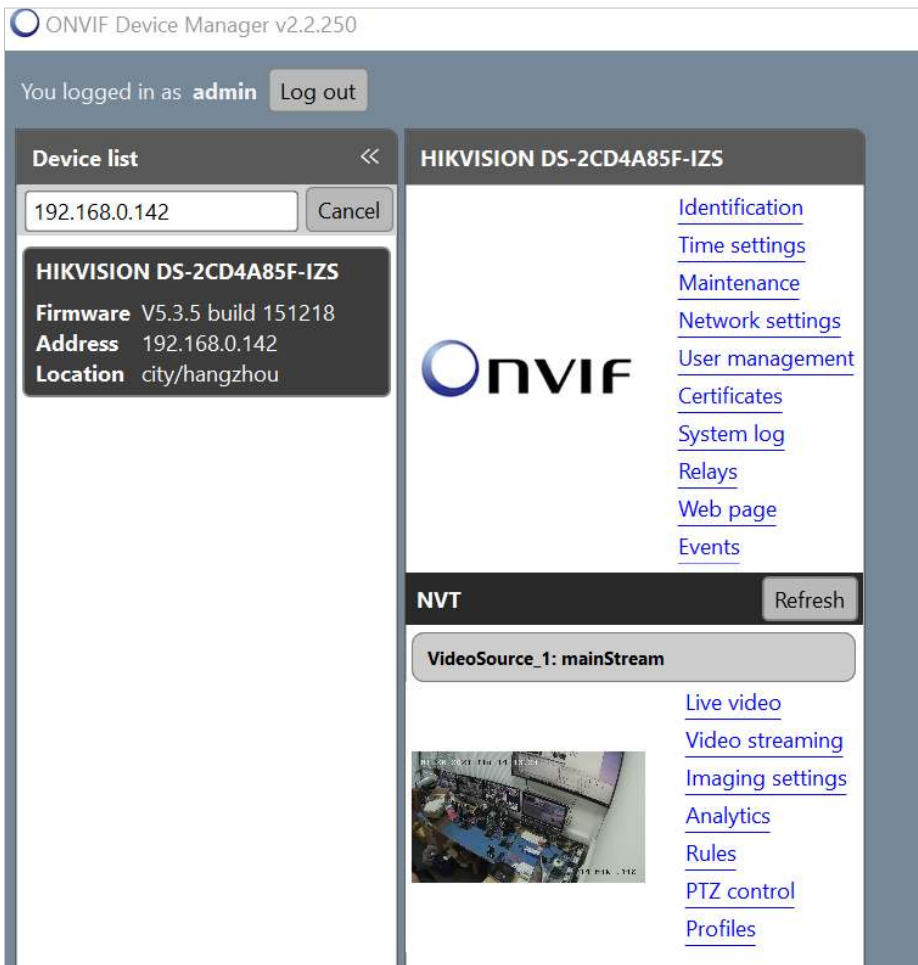


The screenshot shows the ONVIF Device Manager v2.2.250 interface. At the top, it says "ONVIF Device Manager v2.2.250". Below that, it says "You logged in as admin" with a "Log out" button. A "Device list" panel is open, showing a search input field with "192.168.1" and a "Cancel" button. Below the search field, there is a card for an "Hd-Encoder" device with the following details: "Firmware 2.6", "Address 192.168.1.168", and "Location country/China". At the bottom of the card, there is a "Manual" button and "Edit" and "Delete" buttons.

### 1.1.2. Accessing camera

Once you have accessed the camera you wish to interrogate you will see a second panel appear with various parameters, as show in Figure 6 below.

Figure 6 : ODM with camera selected / 2nd information panel



Next select Profiles and expand the two video configuration tabs, as shown in Figure 7 below. The 3 ONVIF profile can be seen, these are

1. MainStream
2. subStream
3. thirdSteam

These names are created by the camera so they may be called something else .

More details can be gathered for the profile selected. The "video Source Configuration" is the camera's sensor size. The Video encoder "Configuration" is the resolution and framerate of the mainStream Profile.

If the "Video Streaming" for the 2nd information panel is selected, alive video is shown with the resolution, frame rate and other information, as shown in Figure 8 below.

Figure 7 : Profiles / 3rd information panel

The screenshot displays the ONVIF Device Manager interface for a HIKVISION DS-2CD4A85F-IZS device. The 'Profiles' section is active, showing a list of profiles: mainStream, subStream, and thirdStream. The 'mainStream' profile is selected. The 'Video Encoder Configuration' section is expanded, showing parameters such as resolution (3840x2160) and frame rate (20). A callout box labeled 'Profiles', 'Video Source', and 'Video Encoder' has red arrows pointing to 'mainStream', 'Video Source Configuration', 'Video Encoder Configuration', and the 'Select' button. The 'Video Source Configuration' section shows parameters like name (VideoSourceConfig), token (VideoSourceToken), use count (3), and bounds (0, 0, 4096, 2160). The 'Video Encoder Configuration' section shows parameters like name (VideoEncoder\_1), token (VideoEncoderToken\_1), use count (1), encoding (h264), resolution (3840x2160), session timeout (PT5S), quality (3), frame rate (20), bitrate (3072), and encoding interval (1).

If the "subStream" is selected and then "Select" is clicked, ODM will now show the parameters for this stream. If the "Video Streaming" is clicked the "subStream" video and parameters will be shown, as can be seen in Figure 9 below.

Figure 8 : ODM Video streaming – main Stream

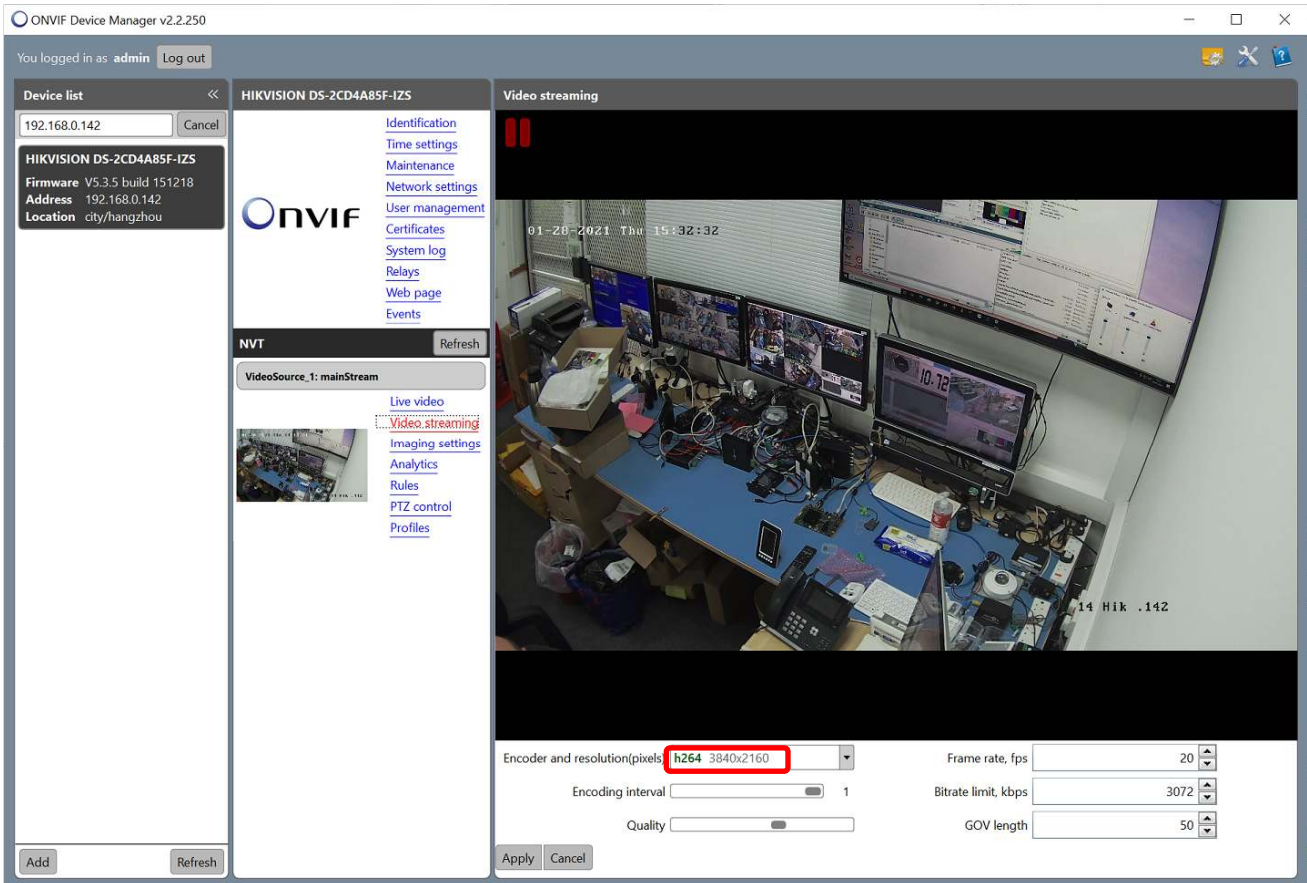
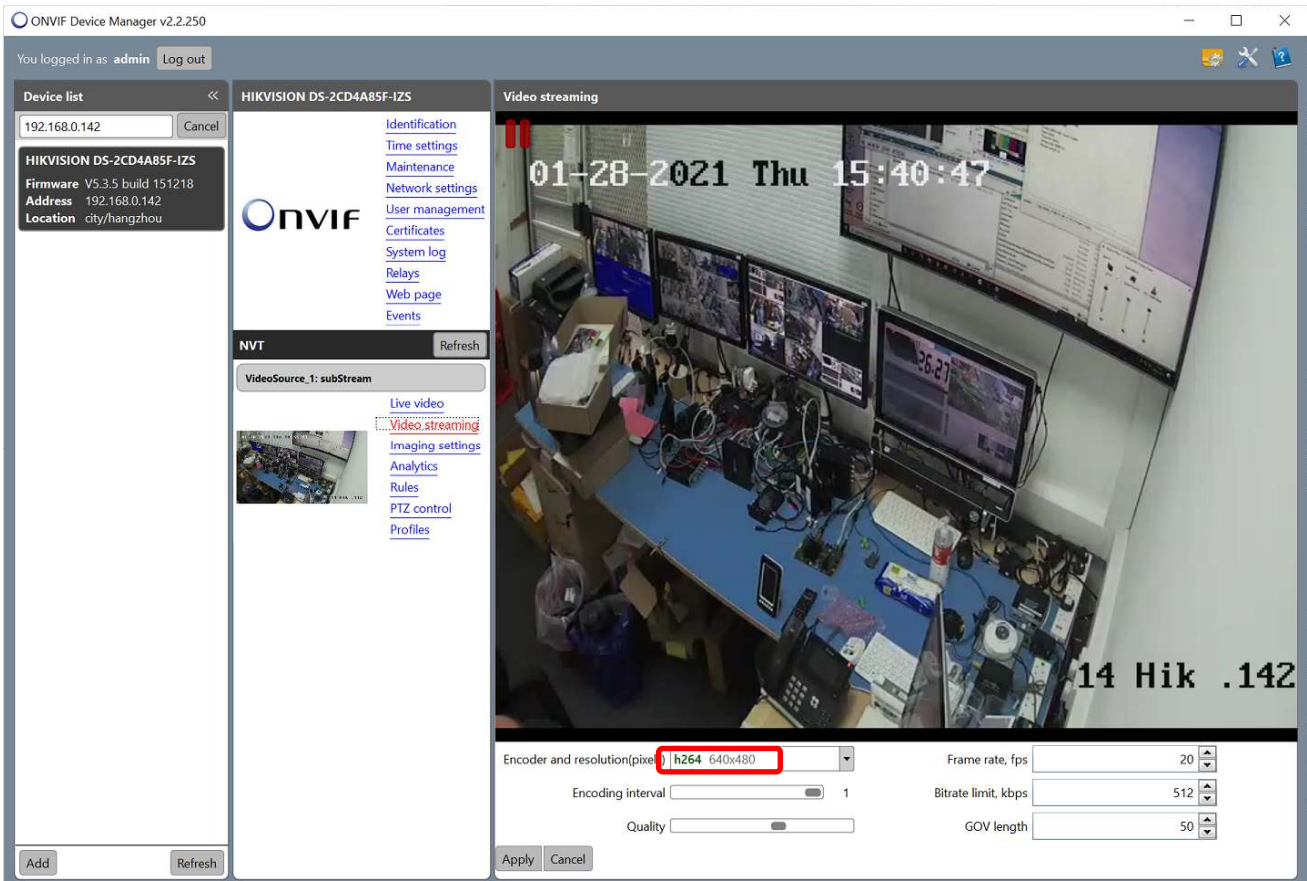


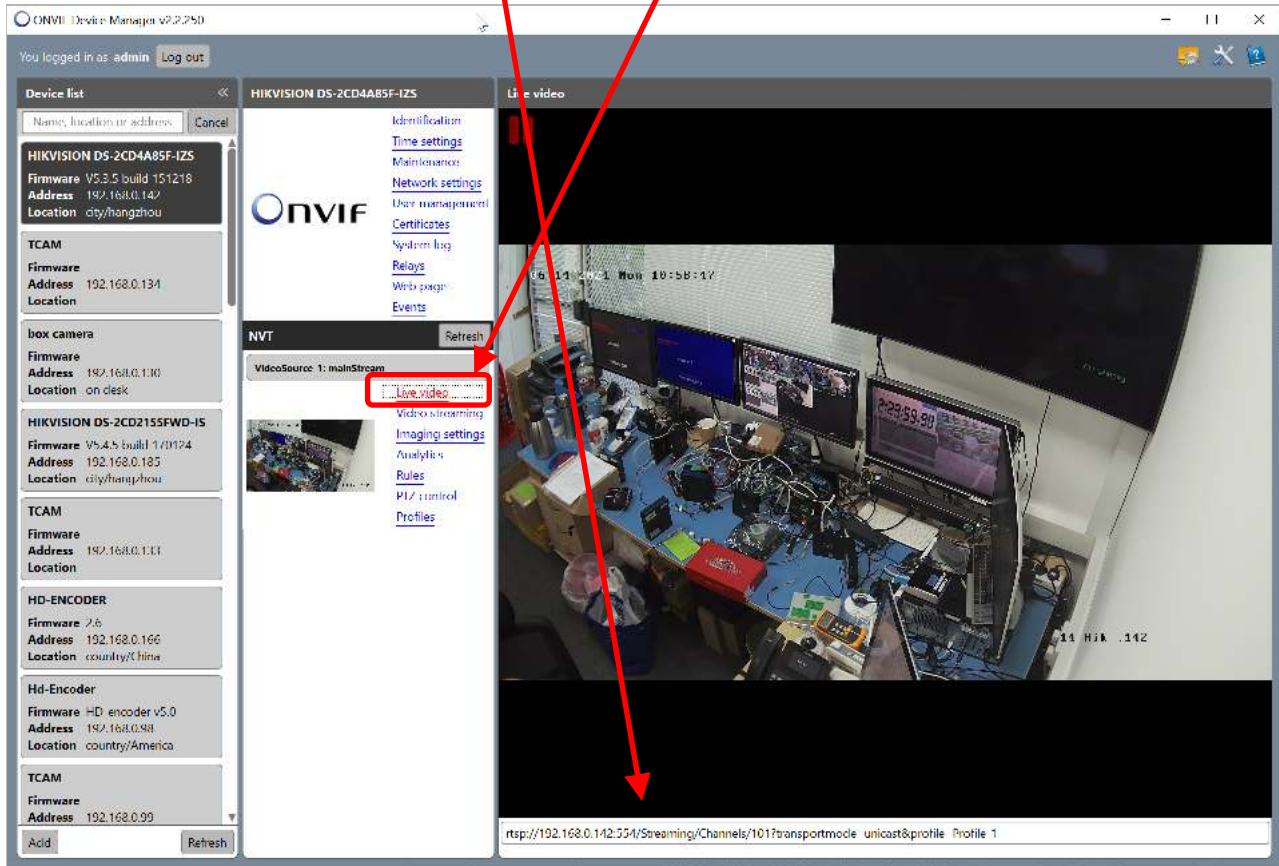
Figure 9 : ODM Video streaming – Sub Stream



### 1.1.3. Getting RTSP URL

Select a profile, as shown in Figure 7, then click "Live video". ODM will connect to the camera and show the live video, and the RTSP URL.

Figure 10 : ODM Live video



In the example shown in Figure 10 the profile is "mainStream" and URL is  
 rtsp://192.168.0.142:554/Streaming/Channels/101?transportmode=unicast&profile=Profile\_1  
 This can be truncated to everything before the first " ? ", i.e.  
 rtsp://192.168.0.142:554/Streaming/Channels/101.

For the other 2 profiles, the URL's are:

"subStream"

rtsp://192.168.0.142:554/Streaming/Channels/102?transportmode=unicast&profile=Profile\_2

"thirdStream"

rtsp://192.168.0.142:554/Streaming/Channels/103?transportmode=unicast&profile=Profile\_3

These URL's can be used to view the video using, for example, VLC, or adding them into a decoder, rather than using the ONVIF profile.